

Catafumo Construction, L.L.C.

REQUEST FOR INFORMATION

No. 00040

4300 Catafumo Way
Palm Beach Gardens, FL 33410

Phone: (561) 694-300
Fax: (561) 691-3890

TITLE: SH-5 Kohler K-9563 Discontinued

DATE: 01/19/2007

PROJECT: CNRI - Cannonsport, LLC

JOB: 06-006-01

TO: Attn: Brian Hayes
Acock Associates Architects
383 North Front Street
Columbus, OH 43215
Phone: 614-228-1586 Fax: 614-228-2780

STARTED: 01/19/2007

COMPLETED:

REQUIRED: 01/26/2007

REQUEST:

Please provide the new shower base -5 that would replace the discontinued of Kohler (K-9563)
See attached confirmation of discontinued product.

Requested By: Catafumo Construction, L.L.C.

Date: 01.19.07

Signed: Gabriel Clavijo

Gabriel Clavijo

Expedition 5

ANSWER:

- ① PLEASE HAVE THE SUPPLIER SUGGEST AN ALTERNATE FOR THIS ITEM
- ② THE SUGGESTED ITEMS HAD TOO LARGE OF A BASE WE ARE LIMITED TO 36" ON THE WINDOW WALL. PERHAPS THE SUPPLIER COULD LOOK AT SOME OTHER BRANDS.

Answered By: Acock Associates Architects

Signed: Brian Hayes

Brian Hayes

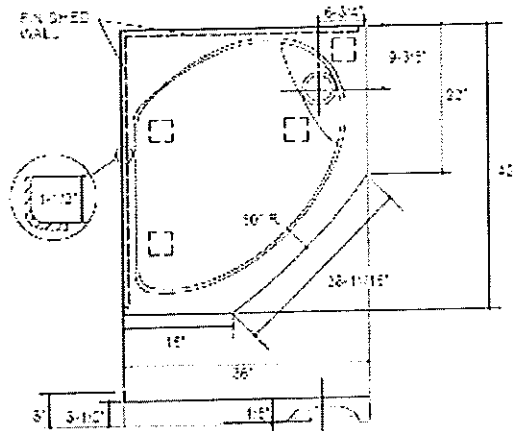
Date: 01-23-07 ①

01-29-07 ②

K-9563

Discontinued Product

Symbio® shower receptor with left-hand corner installation, 42" x 36"

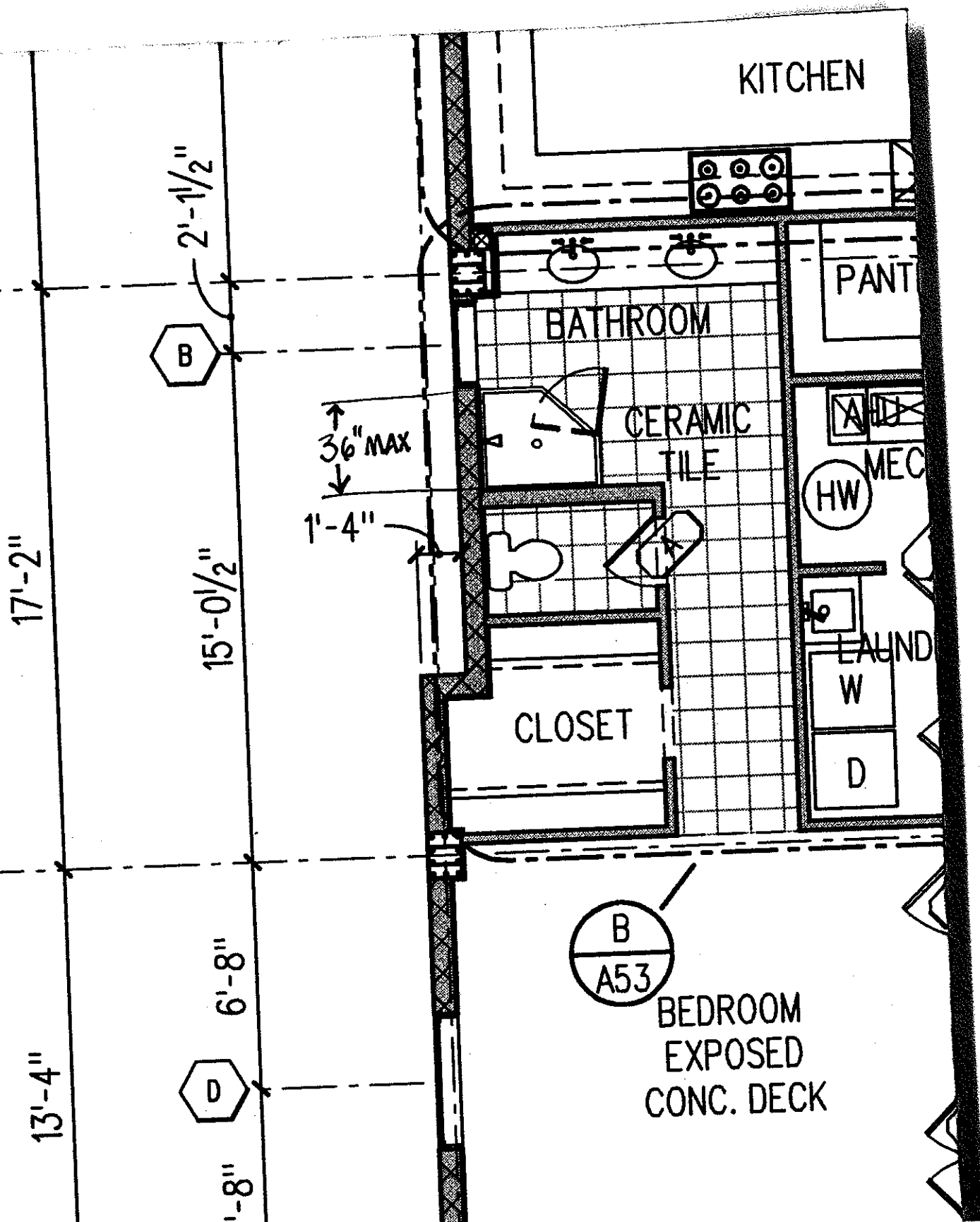


PRODUCT DIAGRAM

SH. 5	KOHLER/ MOEN	ENCLOSURE: KOHLER NEO-ANGLE MODEL #K-9583 R/L HAND & K-9504 FOR LEFT HAND SHOWER BASE. COORDINATE WITH FLOOR PLAN. PROVIDE SHOWER SURROUND MODEL #K701633. CONSTRUCTED OF GLASS WITH BRUSHED STAINLESS STEEL TOP RAIL. ARCHITECT TO SPECIFY WATERPROOF BACKWALL FINISH. CONTR. S: MOEN MONTECELLO MODEL NO. 3301 THERMOSTATIC PRESSURE BALANCING VALVE WITH STOPS, MOEN MODEL RT3330 SHOWER HEAD AND KNOB WITH WALL ESCUTCHEON, SINGLE LEVER HANDLE, 2.5 GPM SHOWER HEAD, POLISHED CHROME FINISH. TRAP: CAST IRON OR COPPER 1 1/2" P-TRAP	1/2"	1/2"
-------	--------------	---	------	------

SCHEDULE.

A. M. C.



ALT 1

KOHLER®

DEVONSHIRE™

Features

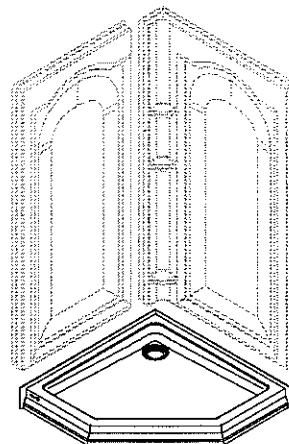
- *Fiberglass (FRP)*
- 40" (101.6 cm) x 40" (101.6 cm) x 4-1/2" (11.4 cm)

40" FRP SHOWER RECEPTOR K-9455

Codes/Standards Applicable

Specified model meets or exceeds the following:

- ANSI Z124.2
- IAPMO/UPC
- CSA B45
- Listed in State of Massachusetts
- Listed in Dade County, Florida



Colors/Finishes

- 0: White
- Other: Refer to Price Book for additional colors/finishes

Accessories:

- CP: Polished Chrome
- SH: Bright Silver
- B1: Intrex™
- L: Clear

Specified Model

Model	Description	Colors/Finishes	
K-9455	Shower receptor	<input type="checkbox"/> 0	<input type="checkbox"/> Other _____
Recommended Accessories		Glass Options	
K-9132	Drain	<input type="checkbox"/> CP	<input type="checkbox"/> Other _____
K-704516	Shower door (Use with K-1018 walls)	<input type="checkbox"/> L	<input type="checkbox"/> B1
		<input type="checkbox"/> SH	<input type="checkbox"/> Other _____
Optional Accessories			
K-1018	Shower walls	<input type="checkbox"/> 0	<input type="checkbox"/> Other _____
K-704517	Shower door (Use with K-9455 and custom walls)	<input type="checkbox"/> L	<input type="checkbox"/> B1
		<input type="checkbox"/> SH	<input type="checkbox"/> Other _____

Product Specification

The one-piece shower receptor shall be 40" (101.6 cm) in length, 40" (101.6 cm) in width, and 4-1/2" (11.4 cm) in height. Shower receptor shall be made of fiberglass (FRP). Shower receptor shall be Kohler Model K-9455-_____.

ART 1

DEVONSHIRE™

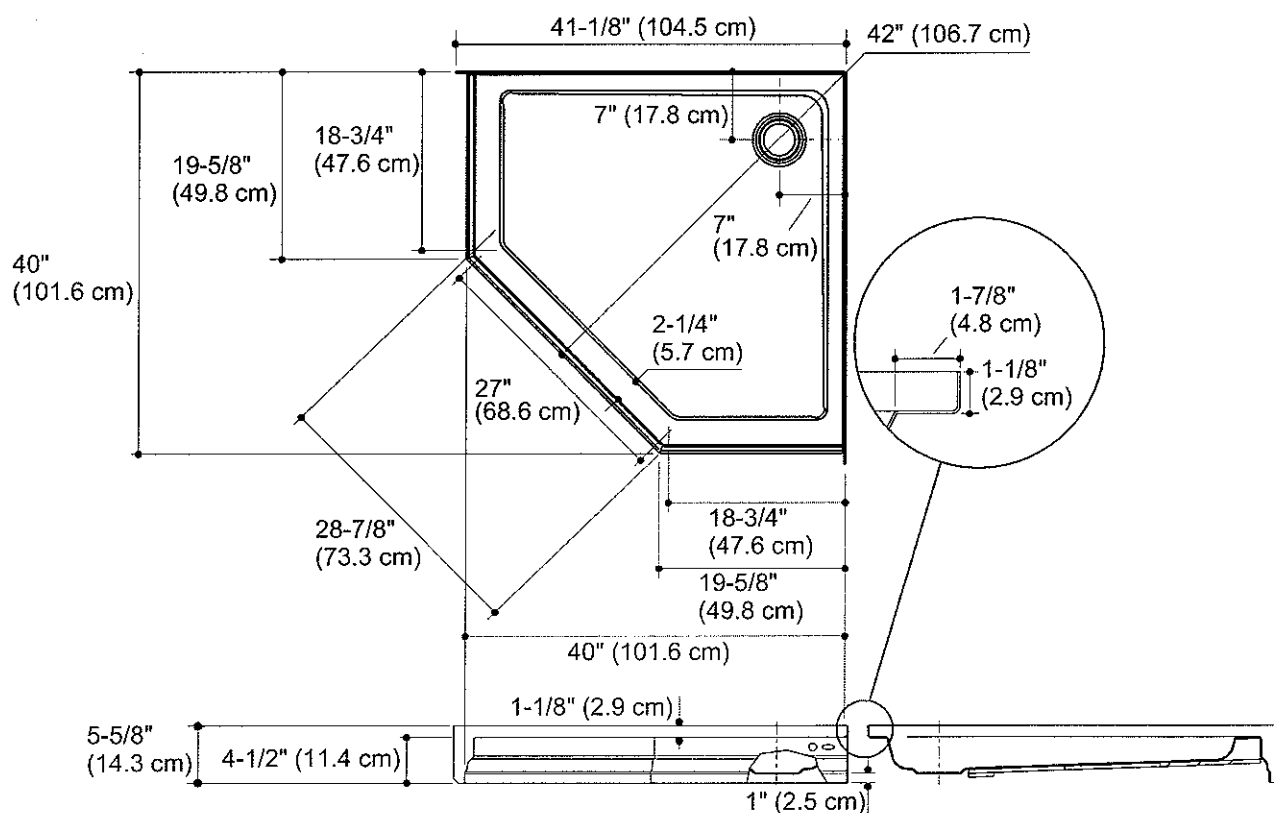
Technical Information

Fixture:	
Weight	33.5 lbs. (15.1 kg)
Outlet	3-3/8" D. (8.6 cm)
Configuration	1-piece

Installation Notes

Install this product according to the installation guide.

Stud opening tolerance (+ 1/4" (6 mm) -0). When fire rated wall is specified, dimensions are to the inside of the wall board. Some shimming between stud frame and fixture may be required.



Product Diagram

DEVONSHIRE™ 40" FRP SHOWER RECEPTOR

Page 2 of 2

1031437-4-B

THE BOLD LOOK
OF **KOHLER**®

ATZ



WATER THAT MOVES YOU®

PRODUCTS
TRANSFORMATIONS
REQUEST INFORMATION
FOR THE TRADE
ABOUT JACUZZI

Product Search →

WHAT'S NEW

BATHS

- . JETTED BATHS
- . PURE AIR® BATHS
- . SALON™ SPAS
- . SOAKING BATHS
- . ACCESSORIES

SHOWERS

- . SHOWER SYSTEMS
- . BASES
- . DOORS
- . ACCESSORIES

TOILETS & SINKS

- . SUITES
- . TOILETS
- . SINKS

HOT TUBS

FAUCETS & FITTINGS

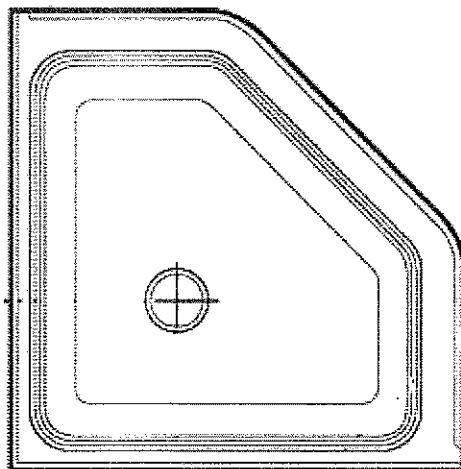
CUSTOMER SUPPORT

Whirlpool Bath
1-800.288.4002
M-F 7AM - 7PM Central Time
Saturday 7AM - 4PM Central Time

Hot Tubs
1.866.234.7727
M - F 8AM - 5PM Pacific

HOME > PRODUCTS > SHOWERS > SHOWER BASES > TRU-LEVEL 42 X
42 NEO™ - DETAIL

TRU-LEVEL 42 X 42 NEO™



→ DEALER LOCATOR

INSTALLATION DOWNLOADS

- . INSTALLATION NOTES
- . SPECIFICATION SHEET

MODEL NUMBER(S)

S352

SPECIFICATIONS

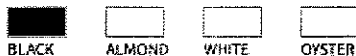
Exterior Dimensions: L 42 " x W 42 " x H 6 "

KEY FEATURES

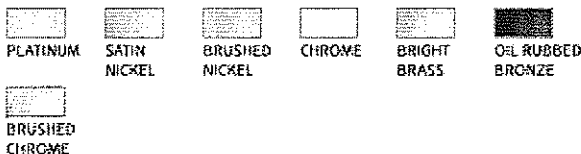
- . Raised dam prevents water leakage over the threshold.
- . Honeycomb construction with foam feet, perfectly level support mechanism.
- . Slip-resistant bottom.
- . Tru-Level™ self-leveling base system offers superior structural integrity and easy installation.
- . Warranty - One year (parts/labor/travel included)

COLORS AND TRIM

COLOR OPTIONS



TRIM OPTIONS



* Due to the nature of online technology, all colors represented on this page are approximate. See an authorized Jacuzzi dealer or catalog for accurate color representations. The trim finishes represented here are for

Alt 2

LIST PRICE

Starting at \$ 603 - How To Buy

* The List Price represents Jacuzzi's price for standard product configurations and basic colors and does not include installation costs. Jacuzzi recommends that products be installed professionally. List price is subject to change.

[BACK TO TOP](#)

[CUSTOMER SUPPORT](#) | [JACUZZI BRANDS](#) | [BUSINESS OPPORTUNITIES](#) | [CAREERS](#)
Copyright © 2006 Jacuzzi Inc. All rights reserved | [TRADEMARK USE](#) | [POLICIES](#) | [LEGAL STATEMENT](#)