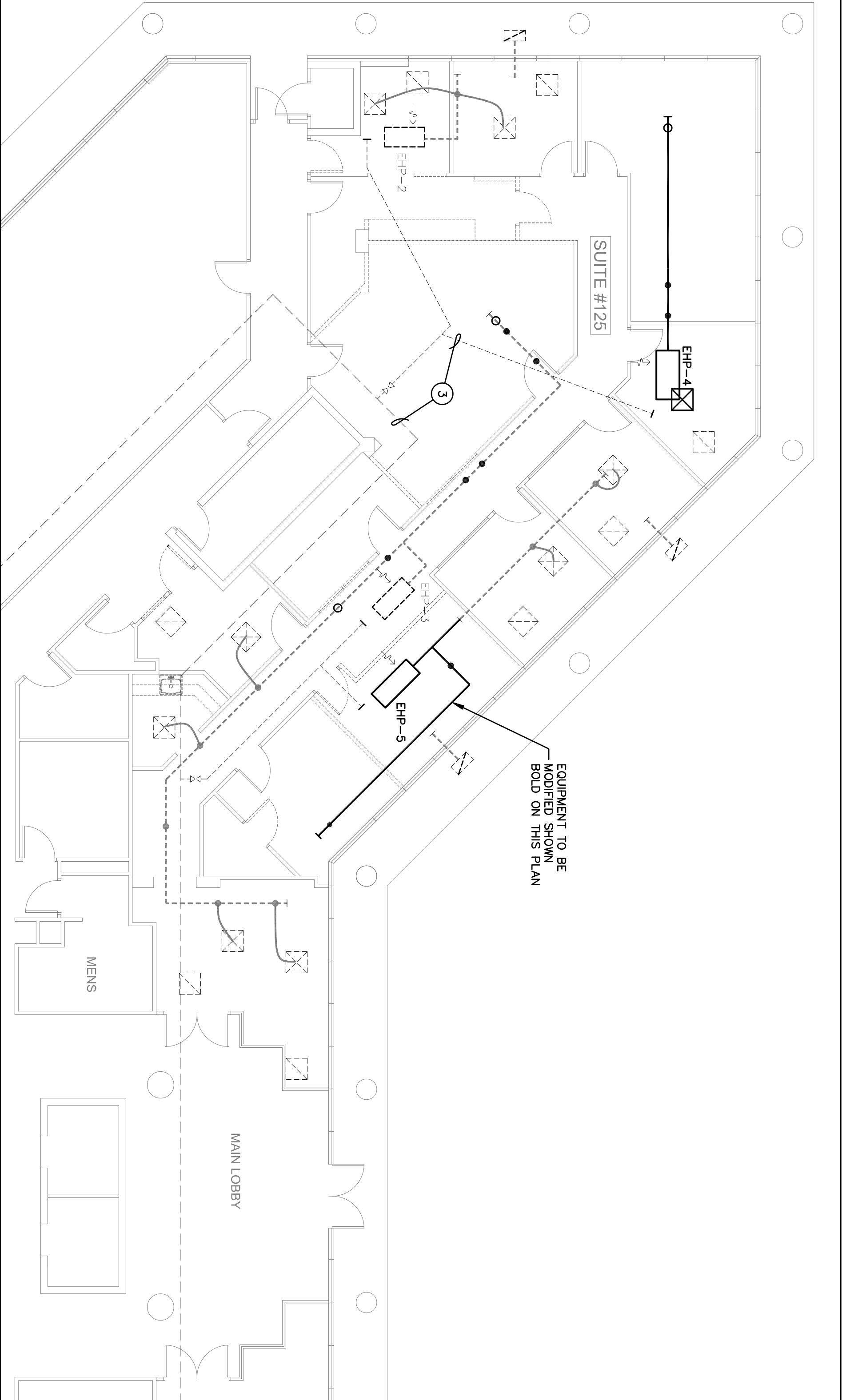


# ABBREVIATIONS

HP	HEAT PUMP
WSP	WATER SOURCE TYPE
EHP	EXISTING HEAT PUMP
S/A	SUPPLY AIR
R/A	RETURN AIR
O/A	OUTSIDE AIR
E/A	EXHAUST AIR
CFM	CUBIC FEET PER MINUTE
MWD	MANUAL VOLUME DAMPER (OPPOSED BLADE TYPE)
FD	FIRE DAMPER
AHU	AIR HANDLING UNIT
CD	CONDENSATE DRAIN
CWS	CONDENSER WATER SUPPLY
CWR	CONDENSER WATER RETURN

# SYMBOL LEGEND

	HEAT PUMP A/C UNIT AS NOTED
	EXISTING EQUIPMENT AS NOTED
	SUPPLY AIR DIFFUSER AS NOTED
	RETURN/TRANSFER GRILLE AS NOTED
	EXISTING SUPPLY AIR GRILLE
	EXISTING RETURN/TRANSFER GRILLE
	DUCTWORK AS NOTED
	EXISTING DUCTWORK TO REMAIN
	DUCT TRANSITION
	TYPE B FIRE DAMPER W/ACCESS DOOR
	MOTORIZED BACKDRAFT/VOLUME DAMPER, GREENHECK VDR63
	MANUAL VOLUME DAMPER
	THERMOSTAT AS NOTED
	FLEXIBLE DUCT, UL CLASS 1
	CONNECTION TO EXISTING EQUIPMENT FOR FLEXIBLE DUCT
	DUCT SMOKE DETECTOR WITH AUDIBLE & VISUAL ALARMS



# HVAC CONTROLS NOTE

AIR CONDITIONING CONTRACTOR SHALL PROVIDE OR CAUSE TO BE PROVIDED ALL CONTROLS, CONTROL WIRING & CONDUIT, POWER WIRING & CONDUIT, AND ALL OTHER ITEMS NECESSARY FOR INSTALLATION AND CONTROL OF HEAT PUMP AIR CONDITIONING UNITS. IN ADDITION, CONTRACTOR SHALL PROVIDE INTERFACE WITH THE EXISTING BMS FOR THE HEAT PUMP AIR CONDITIONING UNITS. THE EXISTING BMS SHALL BE PROGRAMMED BY THE EXISTING STAFF/TAJON ENERGY MANAGEMENT SYSTEM (EMS). PROGRAMMING IS TO ALSO INCLUDE INTERFACED TO EXISTING PROGRAM DESIGNED TO CALCULATE TENANT OVERTIME USAGE OF THE AIR CONDITIONING SYSTEM. CONTRACT BUILDING CONTROLS SERVICE CONTRACTOR THERMAL CONCEPTS AT 1-800-953-2803 FOR CONTROL SYSTEMS. CONTRACTOR SHALL PROVIDE A CONTROL PANEL FOR EACH HEAT PUMP. THE CONTROL PANEL SHALL BE PROVIDED HEAT PUMP STARTER IS TO BE INTERLOCKED WITH THE EXISTING BMS CONTROL PANEL LOCATED IN THE CORRIDOR. (RELAY CONTACT)

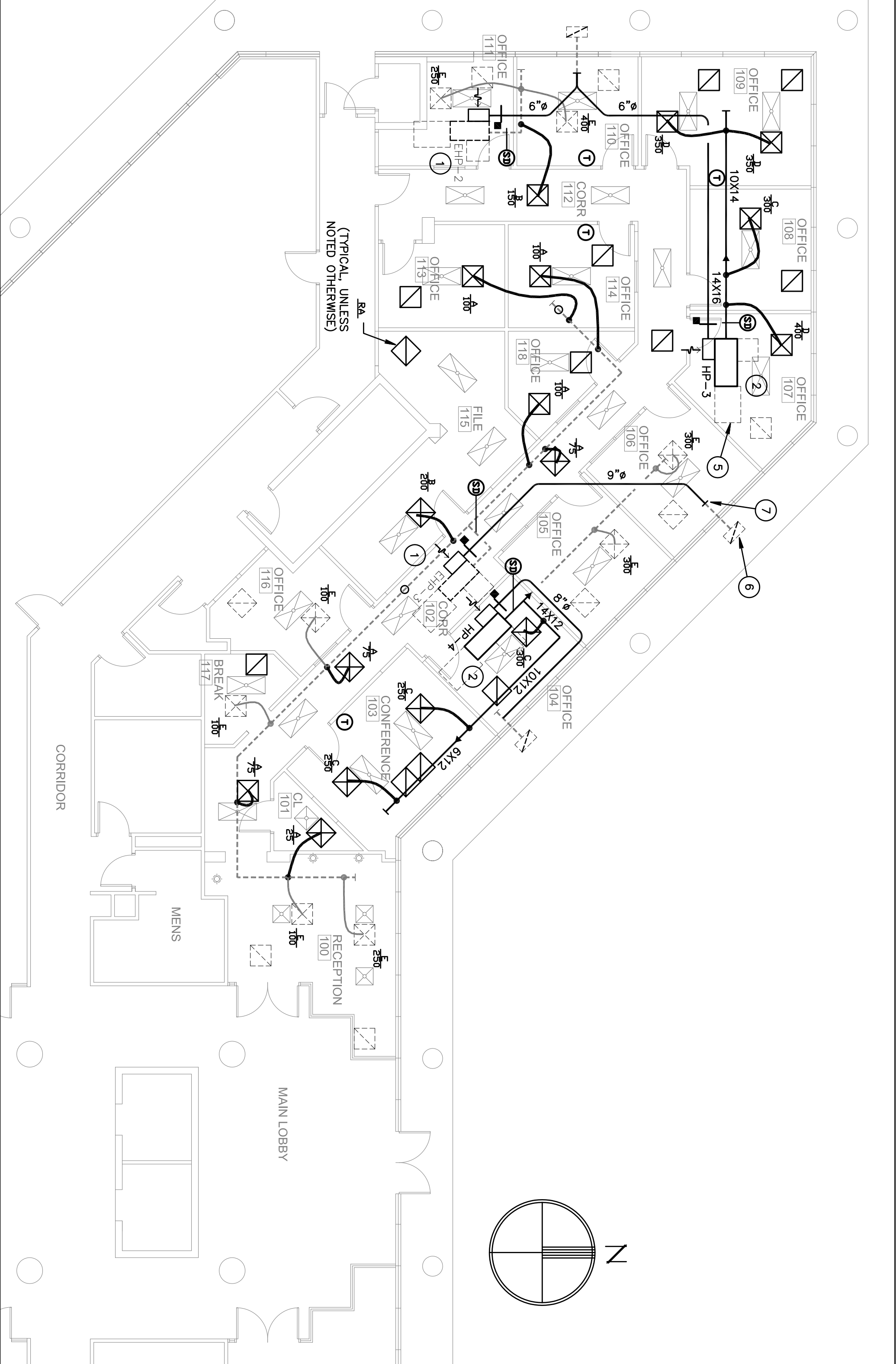
THERMOSTATS ARE TO BE WHITE-RODGERS PROGRAMMABLE TYPE, MODEL 1F86-344 VERIFY EXACT MODEL NUMBER WITH LANDLORD.

THE ABOVE NOTES APPLY TO ALL EQUIPMENT IN THE TENANT SPACE, INCLUDING EXISTING HEAT PUMPS.

# PLAN KEYNOTES:

- EXISTING HEAT PUMP TO REMAIN.
- PROPOSED NEW HEAT PUMP A/C UNIT CONNECT TO EXISTING CONDENSER WATER AND CONDENSATE PIPING AT THIS LOCATION. EXTEND EXISTING PIPING AS REQUIRED.
- CWS&R PIPING TO REMAIN (TYPICAL)
- CONDENSATE DRAIN PIPING IS 3/4" MINIMUM, EXCEPT AS NOTED OTHERWISE
- MAINTAIN 42" CLEAR SPACE ON ELECTRICAL ACCESS SIDE OF A/C UNITS (TYPICAL)
- EXISTING OUTSIDE AIR GRILLE IN SPLIT, WITH 12x6 DUCT STUBBED TO INTERIOR. (TYPICAL)
- PROVIDE SQUARE TO ROUND TRANSITION AS REQUIRED. (TYPICAL)

THE CEILING SPACE THROUGHOUT THIS PROJECT IS A RETURN AIR PLENUM. NO COMBUSTIBLE OR TOXIC MATERIALS ARE ALLOWED ABOVE THE CEILING.



Gilman & Associates, Inc.  
MECHANICAL & ELECTRICAL ENGINEERS  
507 NORTH LAKESIDE DRIVE  
Lake Worth, FL 33460 C.A.\*009078  
(561) 582-0210 Fax (561) 582-8212  
RONALD D. GILMAN P.E. \*37933

birse design inc.

5300 woodland lakes drive  
palm beach gardens, fl 33418  
phone 561-249-4001  
fax 772-409-8684  
AA26001615

Bd

WAGNER LAW GROUP

FAIRWAY OFFICE CENTER  
7108 FAIRWAY DR #125  
PALM BEACH GARDENS, FL

PROJECT NUMBER 710829

# REVISIONS

1	
2	
3	
4	
5	

DRAWN BY GD

CD

3/23/12

M-1