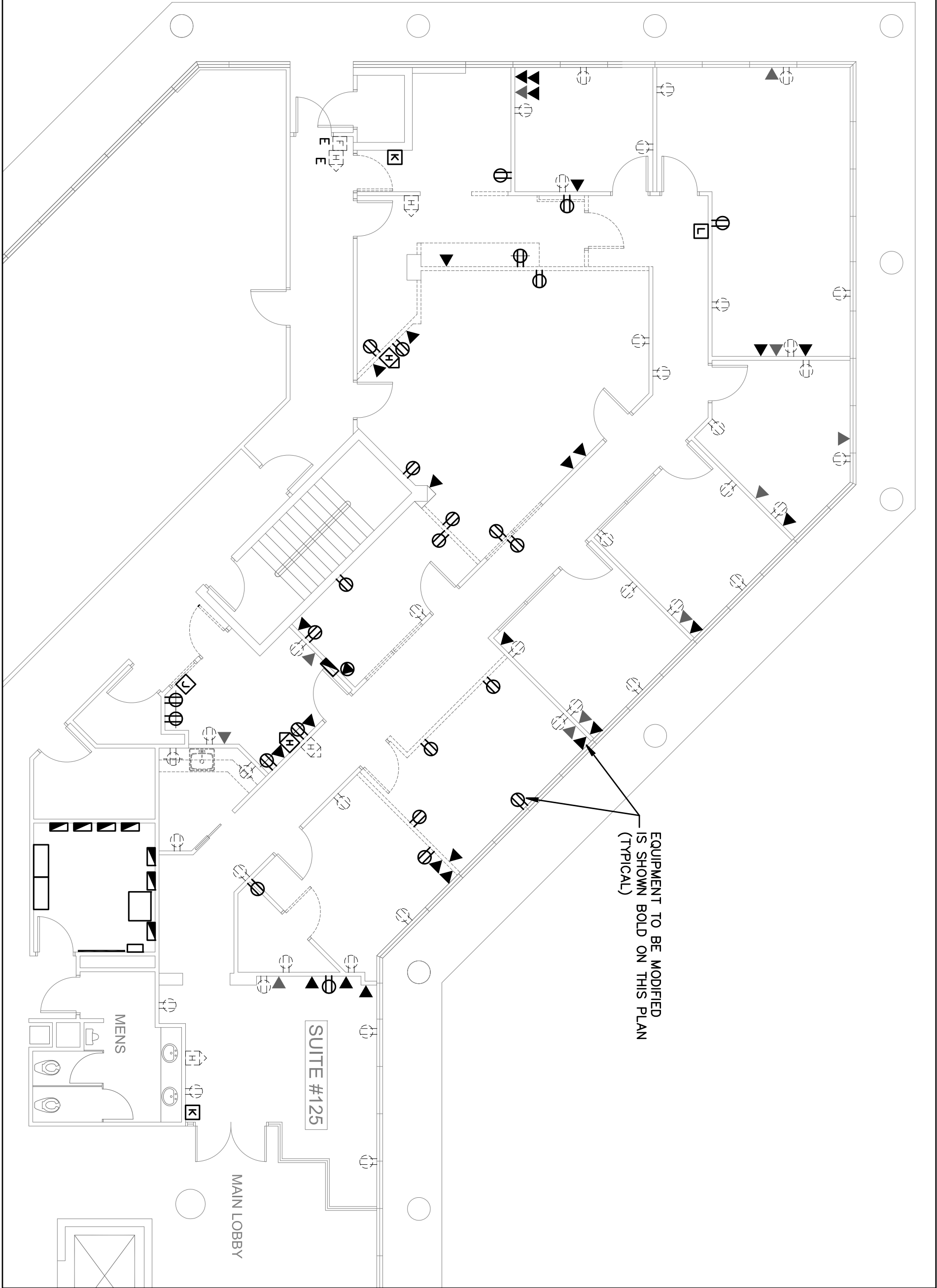


ELECTRICAL LEGEND

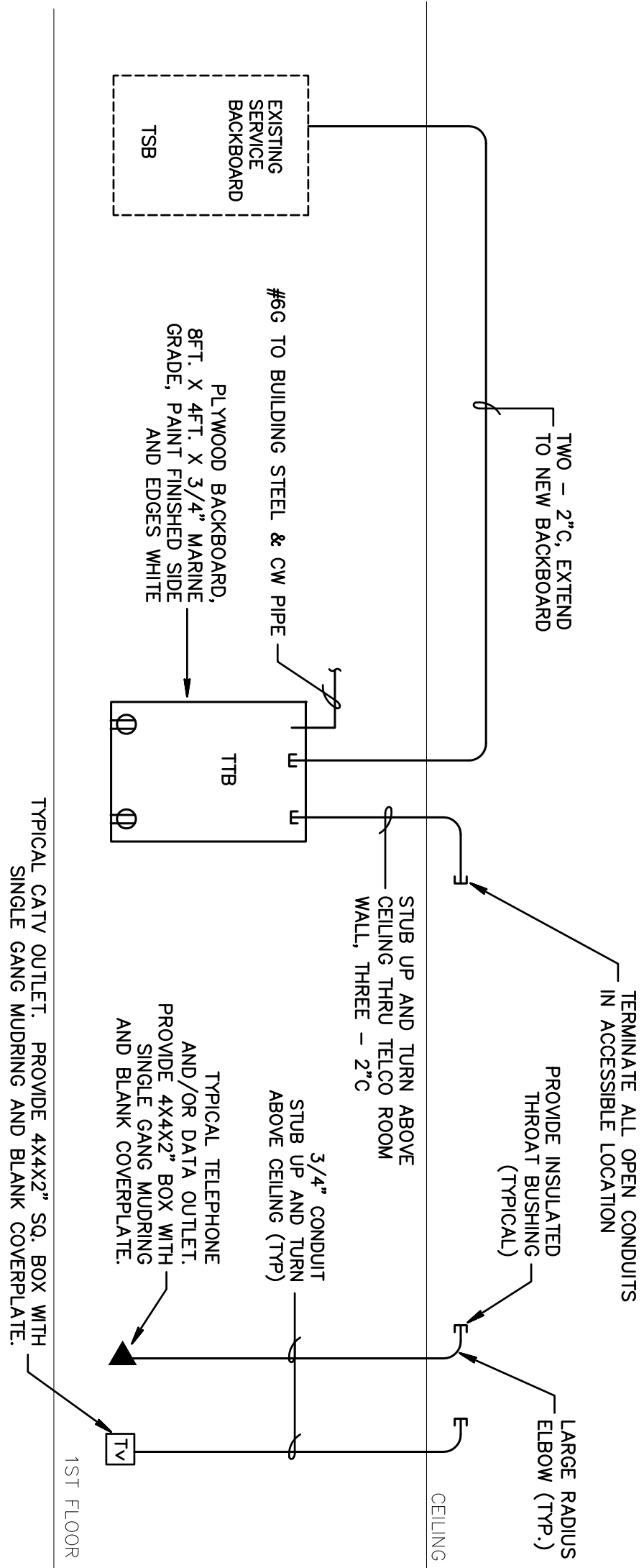
<div><div></div><div>LIGHTING FIXTURE IDENTIFICATION</div></div> <div><div></div><div>RECTANGULAR LIGHTING FIXTURE - AS NOTED</div></div> <div><div></div><div>ROUND LIGHTING FIXTURE</div></div> <div><div></div><div>EXIT LIGHT WITH EMERGENCY POWER BATTERY BACKUP.</div></div> <div><div></div><div>EMERGENCY LIGHTING FIXTURE WITH BATTERY BACKUP</div></div> <div><div></div><div>SINGLE RECEPT - 20 AMP (18' A.F.F.)</div></div> <div><div></div><div>DUPLEX RECEPT MOUNTED ABOVE COUNTER - 20 AMP (44' A.F.F.)</div></div> <div><div></div><div>DUPLEX RECEPT FLUSH FLOOR MOUNTED - 20 AMP</div></div> <div><div></div><div>SPECIAL PURPOSE RECEPT (18' A.F.F. - MATCH EQUIPMENT PROVIDED)</div></div> <div><div></div><div>QUAD-PLEX RECEPT - 20 AMP (18' A.F.F.)</div></div> <div><div></div><div>SINGLE POLE TOGGLE SWITCH, 48' AFF</div></div> <div><div></div><div>3-WAY TOGGLE SWITCH, 48' AFF</div></div> <div><div></div><div>SLIDE TYPE DIMMER SWITCH, VATTAGE AS REQUIRED, 48' AFF</div></div> <div><div></div><div>JUNCTION BOXES</div></div> <div><div></div><div>FUSIBLE DISCONNECT (SWITCH POLES, AMPS/FUSES AS SHOWN)</div></div> <div><div></div><div>MOTOR RATED SWITCH (WITH OVERLOADS)</div></div>	<div><div></div><div>ELECTRICAL PANEL BOARD</div></div> <div><div></div><div>MOTOR LOAD</div></div> <div><div></div><div>CIRCUIT HOME RUN TO PANELBOARD OR AS INDICATED</div></div> <div><div></div><div>CONDUIT CONCEALED</div></div> <div><div></div><div>EXISTING CIRCUIT AS NOTED</div></div> <div><div></div><div>CAPPED CONDUIT</div></div> <div><div></div><div>TELEVISION OUTLET (18' A.F.F.)</div></div> <div><div></div><div>TEL/DATA OUTLET FLUSH FLOOR MOUNTED</div></div> <div><div></div><div>EXISTING DUPLEX RECEPTACLE TO REMAIN</div></div> <div><div></div><div>EXISTING TELEPHONE/DATA OUTLET BOX TO REMAIN</div></div> <div><div></div><div>EXISTING DEVICE TO REMAIN, UNLESS NOTED OTHERWISE</div></div> <div><div></div><div>EXISTING DEVICE, RELOCATED AS SHOWN</div></div> <div><div></div><div>DEDICATED OUTLET</div></div>
---	--



EXISTING ELECTRICAL FLOOR PLAN  
SCALE: 1/8" = 1'-0"

THESE DRAWINGS PROVIDE INFORMATION FOR THE INSTALLATION OF THE ELECTRICAL SYSTEM FOR FUTURE USE BY THE TENANT. THERE IS NO WIRING INCLUDED. ANY SUCH WIRING IS TO BE PROVIDED UNDER SEPARATE PERMIT.

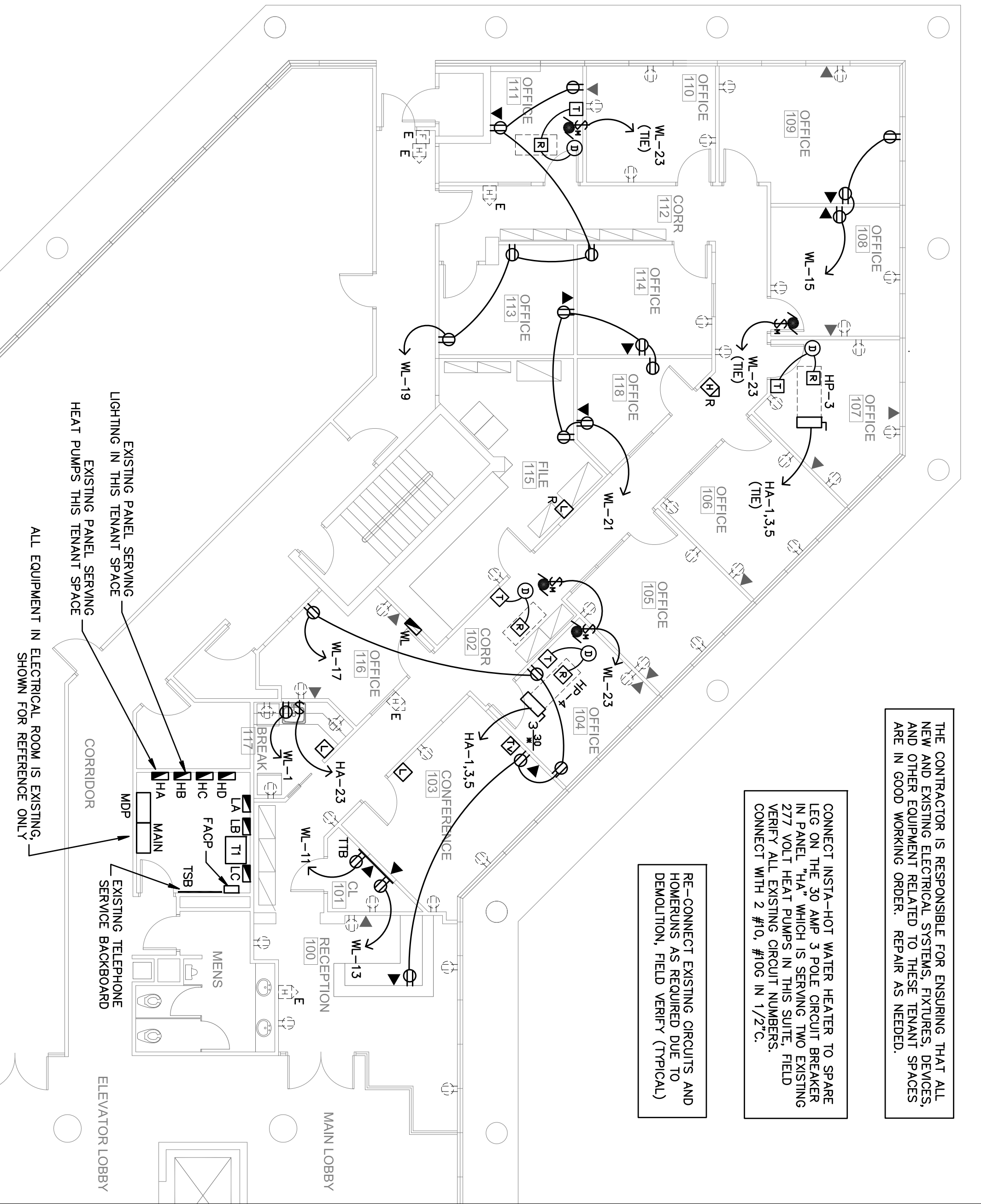
ALL EMPTY RACEWAYS ARE TO BE CLEANED, AND A PULL STRING OUTLET SYSTEM FOR FUTURE USE BY THE TENANT. THERE IS NO WIRING INCLUDED. ANY SUCH WIRING IS TO BE PROVIDED UNDER SEPARATE PERMIT.



TELEPHONE/DATA RISER DIAGRAM

NEW FIRE ALARM DEVICES ARE TO BE COMPATIBLE WITH EXISTING SYSTEM. PROVIDE ADDITIONAL POWER SUPPLIES AS REQUIRED. PROVIDE ADDITIONAL HORNS AND STROBES OF NFPA 72, ADA, AND NFPA 101. FIELD VERIFY POINT OF CONNECTION TO EXISTING SYSTEM.

<div><div></div><div>MANUAL PULL STATION 48" AFF</div></div> <div><div></div><div>WALL MOUNT HORN/STROBE 80" AFF TO BOTTOM</div></div> <div><div></div><div>ADA COMPLAINT STROBE LIGHT 80" AFF TO BOTTOM</div></div> <div><div></div><div>DUCT SMOKE DETECTOR W/O RELAY</div></div> <div><div></div><div>CONTROL MODULE OUTPUT RELAY</div></div> <div><div></div><div>REMOTE TEST &amp; INDICATOR SWITCH FOR DUCT SMOKE DETECTOR</div></div> <div><div></div><div>FIRE ALARM CONTROL PANEL</div></div>	<div><div></div><div>AUDIBLE ALARMS SHALL HAVE A MINIMUM LEVEL OF 15 DBA IN EXCESS OF THE AMBIENT SOUND LEVEL OF THE ROOM, AND SHALL OTHERWISE BE IN ACCORDANCE WITH FCC 11-4.28.2.</div></div> <div><div></div><div>VISUAL ALARMS SHALL HAVE A MINIMUM LEVEL OF 75 CANDELA AND SHALL OTHERWISE BE IN ACCORDANCE WITH FCC 11-4.28.3.</div></div> <div><div></div><div>PROVIDE A RE-CERTIFICATION OF THE FIRE ALARM SYSTEM UPON COMPLETION OF WORK.</div></div>
--	--



PROPOSED ELECTRICAL FLOOR PLAN  
SCALE: 1/8" = 1'-0"

Gilman & Associates, Inc.  
MECHANICAL & ELECTRICAL ENGINEERS  
507 NORTH LAKESIDE DRIVE  
Lake Worth, FL 33460 C.A.#009078  
(561) 582-0210 Fax (561) 582-8212  
RONALD D. GILMAN P.E.#37933

PROJ.# 12-008

birse design inc.

5300 woodland lakes drive  
palm beach gardens, fl 33418  
phone 561-249-4001  
fax 772-409-8684  
AA26001615

Bd

WAGNER LAW GROUP

FAIRWAY OFFICE CENTER  
7108 FAIRWAY DR #125  
PALM BEACH GARDENS, FL

PROJECT NUMBER 710829

REVISIONS

1	
2	
3	
4	
5	

DRAWN BY GD

CD

3/23/12

E-1