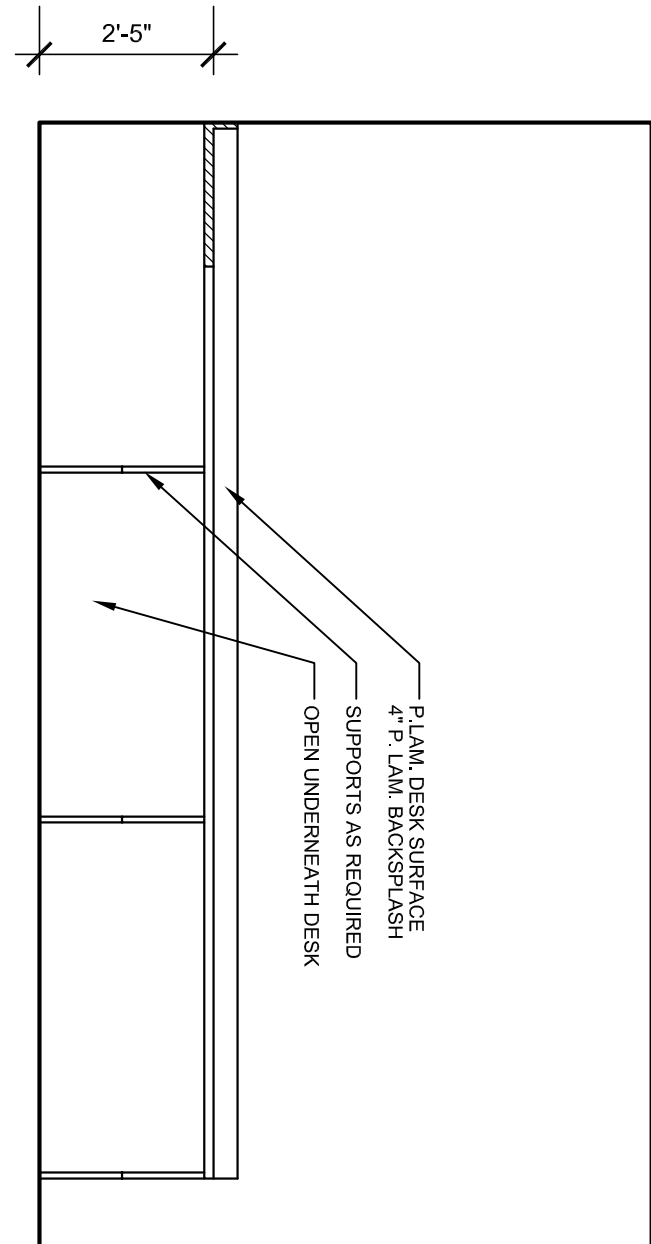
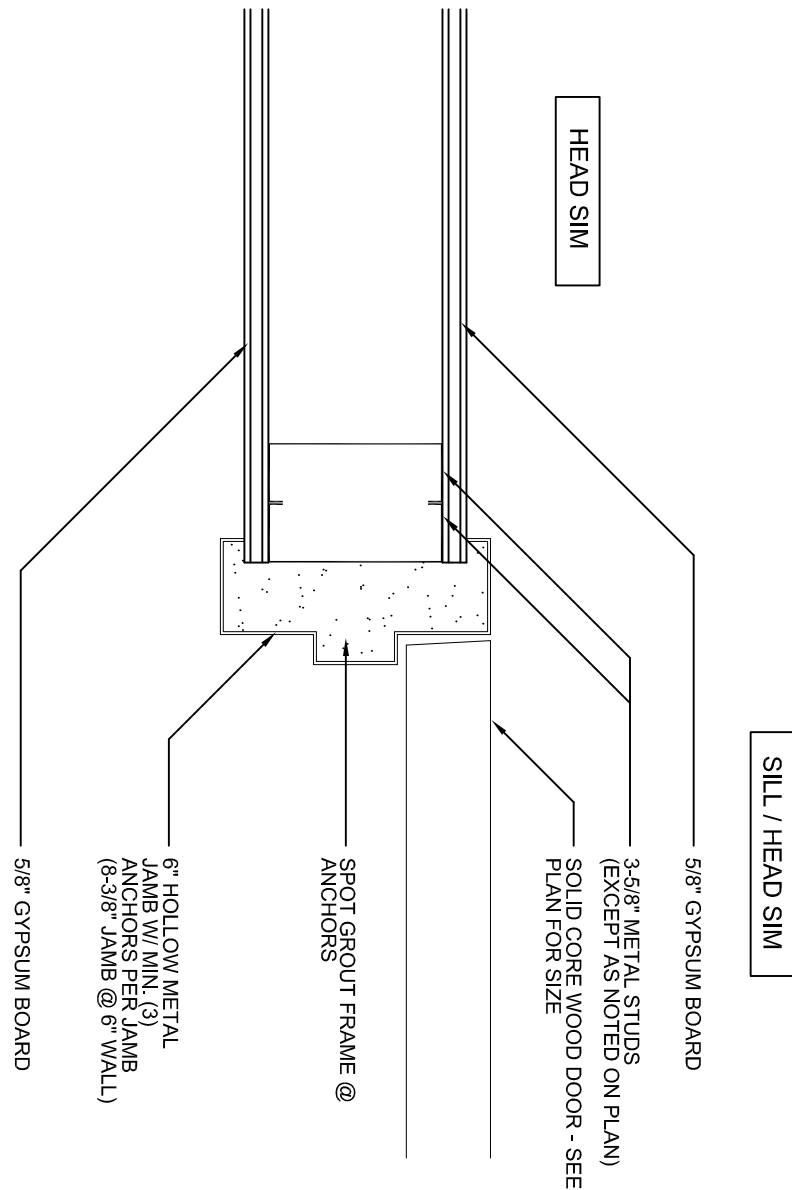
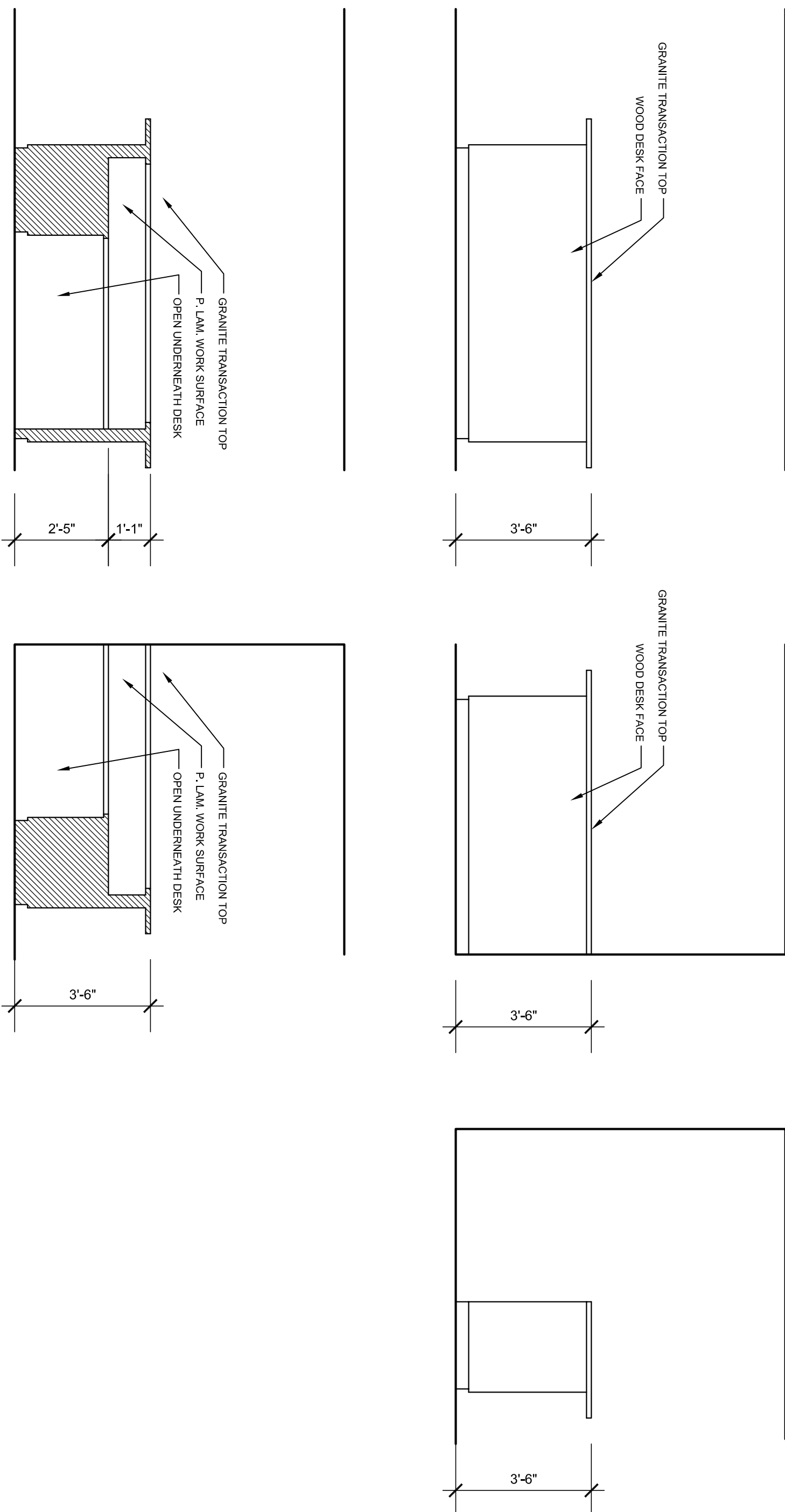
 $3/4" = 1'-0"$ $3/4" = 1'-0"$ 

-
- Technical drawing of a door frame section. It shows a vertical frame with a horizontal opening labeled "2'x5\"". The drawing includes a cross-section of the frame and a hatched area indicating a specific material or construction detail.

 $3/8" = 1'-0"$ $3/8" = 1'-0"$ 

◀
|
-
▶

- DOOR SCHEDULE

[illegible] $\frac{1}{4}'' = 1'-0$ 

3/8" = 1'-0"