

ELECTRICAL LEGEND

- LIGHTING FIXTURE IDENTIFICATION
- ⊠ RECTANGULAR LIGHTING FIXTURE - AS NOTED
- ▭ RECTANGULAR LIGHTING FIXTURE - EXISTING AS NOTED
- EXIT LIGHT WITH EMERGENCY BATTERY BACKUP
- ⊕ EMERGENCY LIGHTING FIXTURE WITH BATTERY BACKUP
- ⊕ DUPLEX RECEPT - 20 AMP (18" AFF.)
- SINGLE RECEPT - 20 AMP (18" AFF.)
- ⊕ DUPLEX RECEPT MOUNTED ABOVE COUNTER - 20 AMP (42" AFF.)
- \$ SINGLE POLE TOGGLE SWITCH, 48" AFF
- \$ 3-WAY TOGGLE SWITCH, 48" AFF
- ⊠ ELECTRICAL PANEL/BOARD
- ⬤ MOTOR LOAD
- ⤵ CIRCUIT HOME RUN TO PANEL/BOARD OR AS INDICATED
- ⤵ CONDUIT CONCEALED
- ⤵ EXISTING CIRCUIT AS NOTED
- ⤵ CAPED CONDUIT
- ⤵ TELEVISION OUTLET (18" AFF.)
- ⤵ TELEPHONE/DATA OUTLET (18" AFF.)
- ⤵ TEL/DATA OUTLET FLUSH FLOOR MOUNTED
- ⤵ EXISTING DUPLEX RECEPTACLE TO REMAIN
- ⤵ EXISTING TELEPHONE/DATA OUTLET TO REMAIN
- E EXISTING DEVICE TO REMAIN, UNLESS NOTED OTHERWISE
- R EXISTING DEVICE, RELOCATED AS SHOWN
- D EXISTING DEVICE TO BE DEMOLISHED OR RELOCATED
- ⊠ OCCUPANCY SENSOR WITH MANUAL SWITCH, HUBBELL LHM1S1, 48" AFF
- ⊠ OCCUPANCY SENSOR, CEILING MOUNT, HUBBELL DM1 DT-2000

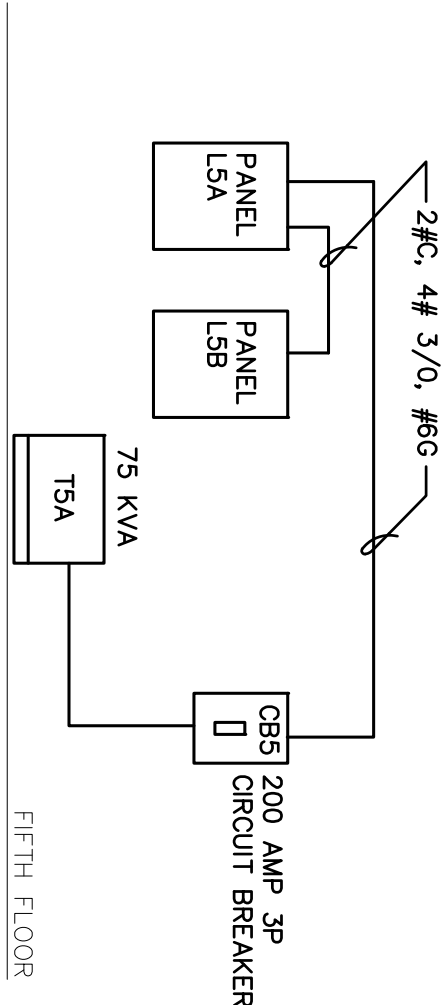
ELECTRICAL GENERAL NOTES

- DO NOT SCALE THE ELECTRICAL DRAWINGS. REFER TO ARCHITECTURAL PLANS AND ELEVATIONS FOR EXACT LOCATION OF ALL EQUIPMENT.
- ALL WORK SHALL BE DONE IN ACCORDANCE WITH NATIONAL ELECTRICAL CODE NFPA-70 (2008), THE LIFE SAFETY CODE NFPA-101 (2006), THE NATIONAL FIRE ALARM CODE NFPA-72 (2002), AND THE FLORIDA BUILDING CODE (FBC 2007 WITH 2009 SUPPLEMENTS).
- MINIMUM WIRE SIZE SHALL BE #12 AWG, EXCLUDING CONTROL WIRING, UNLESS OTHERWISE NOTED. ALL CONDUCTORS SHALL BE COPPER WITH THWN INSULATION.
- OUTLET BOXES SHALL BE SHEET STEEL IN DRY LOCATIONS, CAST ALLOY IN WET LOCATIONS, AND NON-FLAMMABLE LOCATIONS AND SPECIAL ENCLOSURES AS REQUIRED FOR OTHER CLASSIFIED AREAS.
- DISCONNECT SWITCHES SHALL BE HP RATED, HEAVY DUTY, QUICK-MAKE, QUICK-BREAK ENCLOSURES AS REQUIRED BY EXPOSURE.
- MOTOR STARTERS SHALL BE MANUAL OR MAGNETIC, WITH OVERLOAD RELAYS IN EACH HOT LEG.
- IT IS NOT THE INTENT OF THESE PLANS TO SHOW EVERY MINOR DETAIL OF THE ELECTRICAL SYSTEM. THE CONTRACTOR SHALL BE RESPONSIBLE FOR ALL DETAILS FOR THE COMPLETE ELECTRICAL SYSTEM AND PROVIDE ALL REQUIREMENTS NECESSARY FOR EQUIPMENT TO BE PLACED IN PROPER WORKING ORDER.
- ELECTRICAL SYSTEM SHALL BE COMPLETE AND EFFECTIVELY GROUNDED AS REQUIRED BY THE LATEST EDITION OF THE NEC.
- ALL MATERIALS SHALL BE NEW AND BEAR UNDERWRITERS' LABELS WHERE APPLICABLE.
- ALL WORK SHALL BE PERFORMED BY A LICENSED ELECTRICAL CONTRACTOR IN A FIRST CLASS WORKMANLIKE MANNER. THE COMPLETED SYSTEM SHALL BE FULLY OPERATIVE, AND ACCEPTED BY ENGINEER/ARCHITECT.
- ALL WORK SHALL BE COORDINATED WITH OTHER TRADES TO AVOID INTERFERENCE WITH THE PROGRESS OF CONSTRUCTION.
- CONTRACTOR SHALL GUARANTEE ALL MATERIALS AND WORKMANSHIP FREE FROM DEFECTS FOR A PERIOD OF NOT LESS THAN ONE YEAR FROM DATE OF ACCEPTANCE.
- CORRECTION OF ANY DEFECTS SHALL BE COMPLETED WITHOUT ADDITIONAL CHARGE AND SHALL INCLUDE REPLACEMENT OR REPAIR OF ANY OTHER PHASE OF THE INSTALLATION WHICH MAY HAVE BEEN DAMAGED THEREBY.
- ALL REQUIRED INSURANCE SHALL BE PROVIDED FOR PROTECTION AGAINST PUBLIC LIABILITY AND PROPERTY DAMAGE FOR THE DURATION OF THE WORK. CONTRACTOR SHALL PAY FOR ALL PERMITS, FEES, INSPECTIONS, AND TESTING.
- THE ELECTRICAL INSTALLATION SHALL MEET ALL STANDARD REQUIREMENTS OF POWER AND TELEPHONE COMPANIES.
- FURNISH AND INSTALL DISCONNECT SWITCHES AND WIRING FOR AIR CONDITIONING SYSTEM AS PER MANUFACTURERS RECOMMENDATIONS. CONTROLS SHALL BE PROVIDED BY THE AIR CONDITIONING CONTRACTOR AND CONNECTED BY ELECTRICAL CONTRACTOR.
- ALL RACEWAYS UNDERGROUND SHALL BE A MINIMUM OF 3/4" CONDUIT.
- ALL CIRCUIT BREAKERS, TWO AND THREE POLE, TO BE COMMON TRIP, NO THE HANDLES, OR HANDLES WILL BE ACCEPTED.
- ALL FUSES, UNLESS NOTED IN DRAWING, SHALL BE CURRENT LIMITING (C.L.) RATED FOR 600,000 A.I.C.
- ALL ELECTRICAL EQUIPMENT, DEVICES, WIRE, ETC., SHALL BE LISTED, UL APPROVED, AND MANUFACTURED BY LISTED MANUFACTURERS, INC. (UL), WHERE STANDARDS HAVE BEEN ESTABLISHED BY UL.
- THE CONTRACTOR IS RESPONSIBLE TO MAINTAIN, ON SITE, A DETAILED AS-BUILT PLAN SHOWING ACTUAL INSTALLATIONS. THE CONTRACTOR IS TO PROVIDE A NEATLY DRAWN COMPENSATIVE AS-BUILT SET OF PLANS UPON COMPLETION, WHICH ARE SUITABLE FOR SUBMISSION TO THE BUILDING DEPARTMENT AND THE OWNER.
- ALL WIRING IS TO BE IN CONDUIT. CABLES ARE NOT ACCEPTABLE EXCEPT WHERE USED FOR FINAL CONNECTIONS TO RECESSED LIGHTING FIXTURES IN LENGTHS UP TO SIX FEET MAXIMUM.

FIRE ALARM LEGEND

- F MANUAL PULL STATION, 48" AFF
 - H WALL MOUNT HORN/STROBE, 80" AFF TO BOTTOM
 - L ADA COMPLIANT STROBE LIGHT, 80" AFF TO BOTTOM
 - S CEILING SMOKE DETECTOR, PHOTOELECTRIC TYPE
- ALL DEVICES ARE EXISTING, TO REMAIN AS IS, SHOWN FOR REFERENCE ONLY.

THE CONTRACTOR IS RESPONSIBLE FOR ENSURING THAT ALL NEW AND EXISTING ELECTRICAL SYSTEMS, FIXTURES, DEVICES, AND OTHER EQUIPMENT RELATED TO THESE TENANT SPACES ARE IN GOOD WORKING ORDER. REPAIR AS NEEDED.



PARTIAL EXISTING RISER DIAGRAM

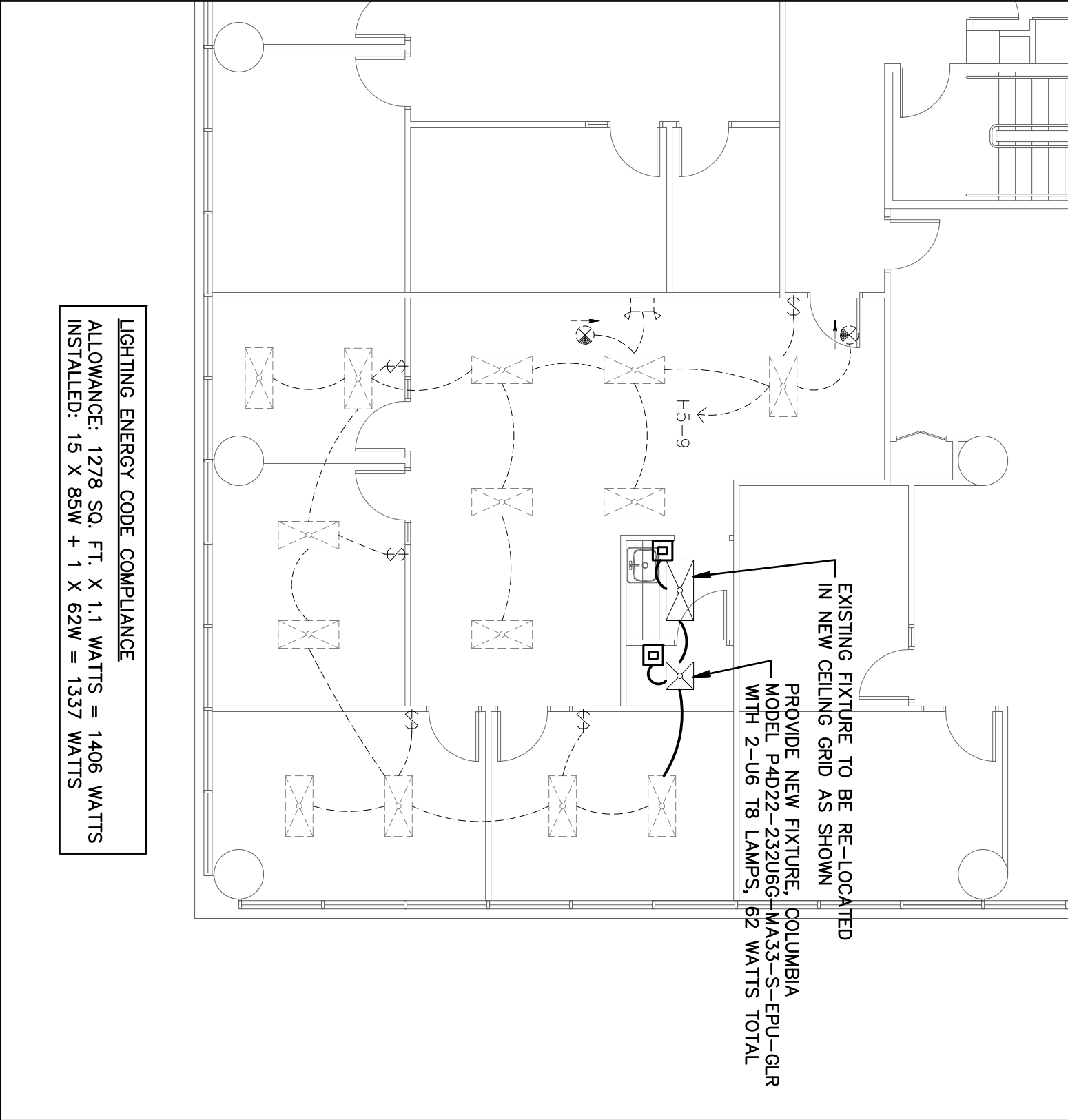
EXISTING PANEL

PANEL L5B

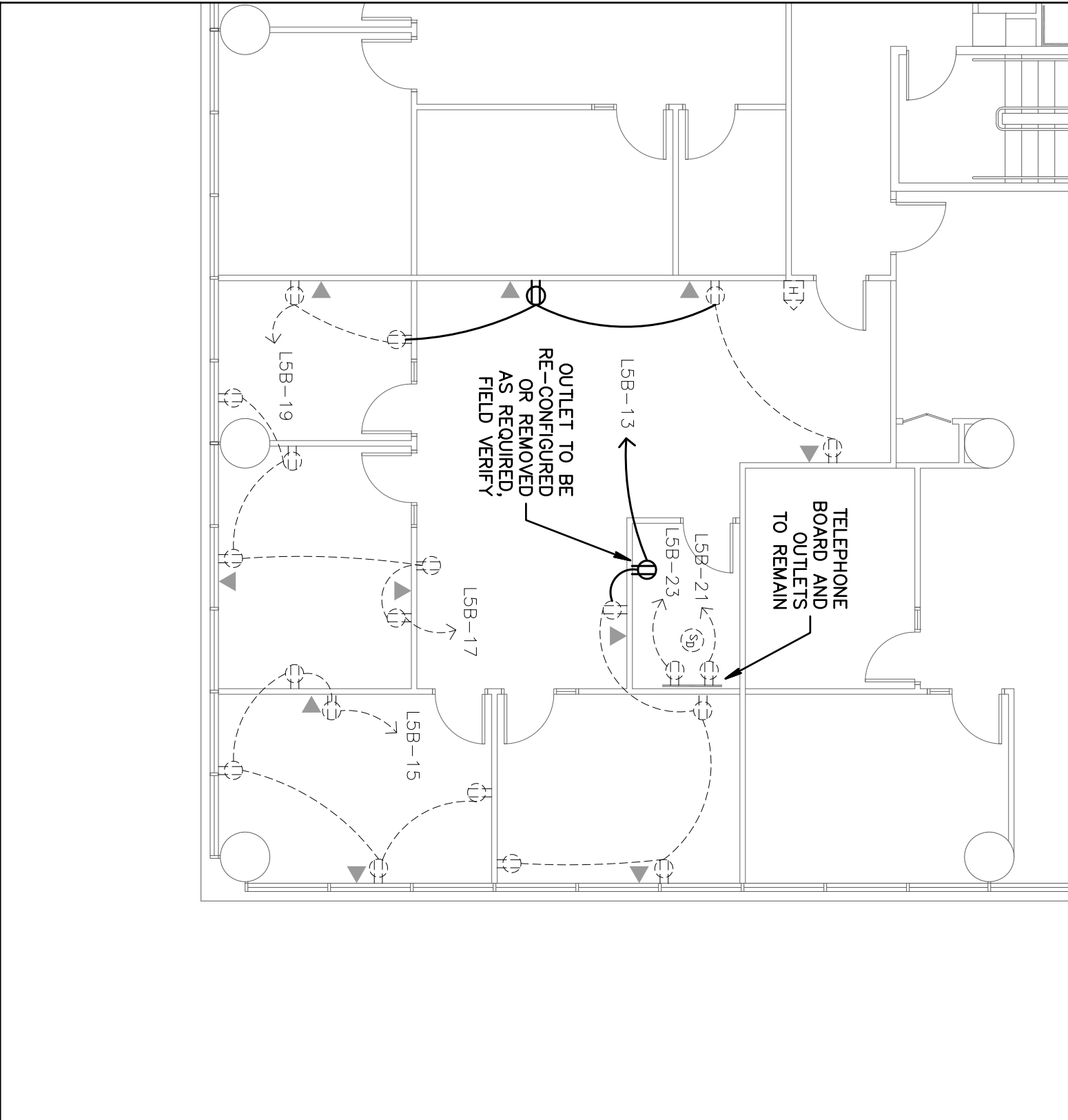
TYPE: WESTINGHOUSE W10B									
SERVICES: 120/208 3Ø 4W									
MOUNTING: SURFACE									
POLES: 4/2									
DEK	NO DEK	TRIP	CON-	WIRE	REMARKS	CKT1	CKT	REMARKS	
K.V.A.	K.V.A.	POLE				NO.	NO.		
0.9	20-1			SUITE 507 REC.	1	2	SUITE 501 REC.	20-1	0.9
0.9	20-1			SUITE 507 REC.	3	4	SUITE 501 REC.	20-1	0.9
0.9	20-1			SUITE 507 REC.	5	6	SUITE 501 REC.	20-1	0.9
0.7	20-1			SUITE 507 REC.	7	8	SUITE 501 REC.	20-1	0.9
0.2	20-1			SUITE 507 TEL.	9	10	SUITE 501 REC.	20-1	0.9
0.3	20-1			SUITE 507 SERV.	11	12	SUITE 501 TEL.	20-1	0.2
0.9	20-1	1/2	12	SUITE 505 REC.	13	14	SUITE 501 SERV.	20-1	0.3
0.9	20-1			SUITE 505 REC.	15	16	SPARE	20-1	
0.9	20-1			SUITE 505 REC.	17	18	SPARE	20-1	
0.9	20-1	1/2	12	SUITE 505 REC.	19	20	SPARE	20-1	
0.2	20-1	1/2	12	SUITE 505 TEL.	21	22	SPARE	20-1	
0.3	20-1			SUITE 505 SERV.	23	24	SPARE	20-1	
0.9	20-1			SUITE 503 REC.	25	26	SPARE	20-1	
0.9	20-1			SUITE 503 REC.	27	28	SPARE	20-1	
0.7	20-1			SUITE 503 REC.	29	30	SPARE	20-1	
0.2	20-1			SUITE 503 TEL.	31	32	SPARE	20-1	
0.3	20-1			SUITE 503 SERV.	33	34	505S REFRIG.	12 1/2	20-1
	20-1			SPARE	35	36	505S APPLIANCE	12 1/2	20-1
	20-2			SPARE	37	38	505S COPY MACH.	12 1/2	20-1
	20-2			SPARE	39	40	505S INSTA-HOT	12 1/2	20-2
	20-1			VAV CONTROLS	41	42			
11.2									12.1

SECTION A LOAD: 19.7 KVA
SECTION B LOAD: 23.3 KVA
TOTAL LOAD: 43.0 KVA = 119 AMPS

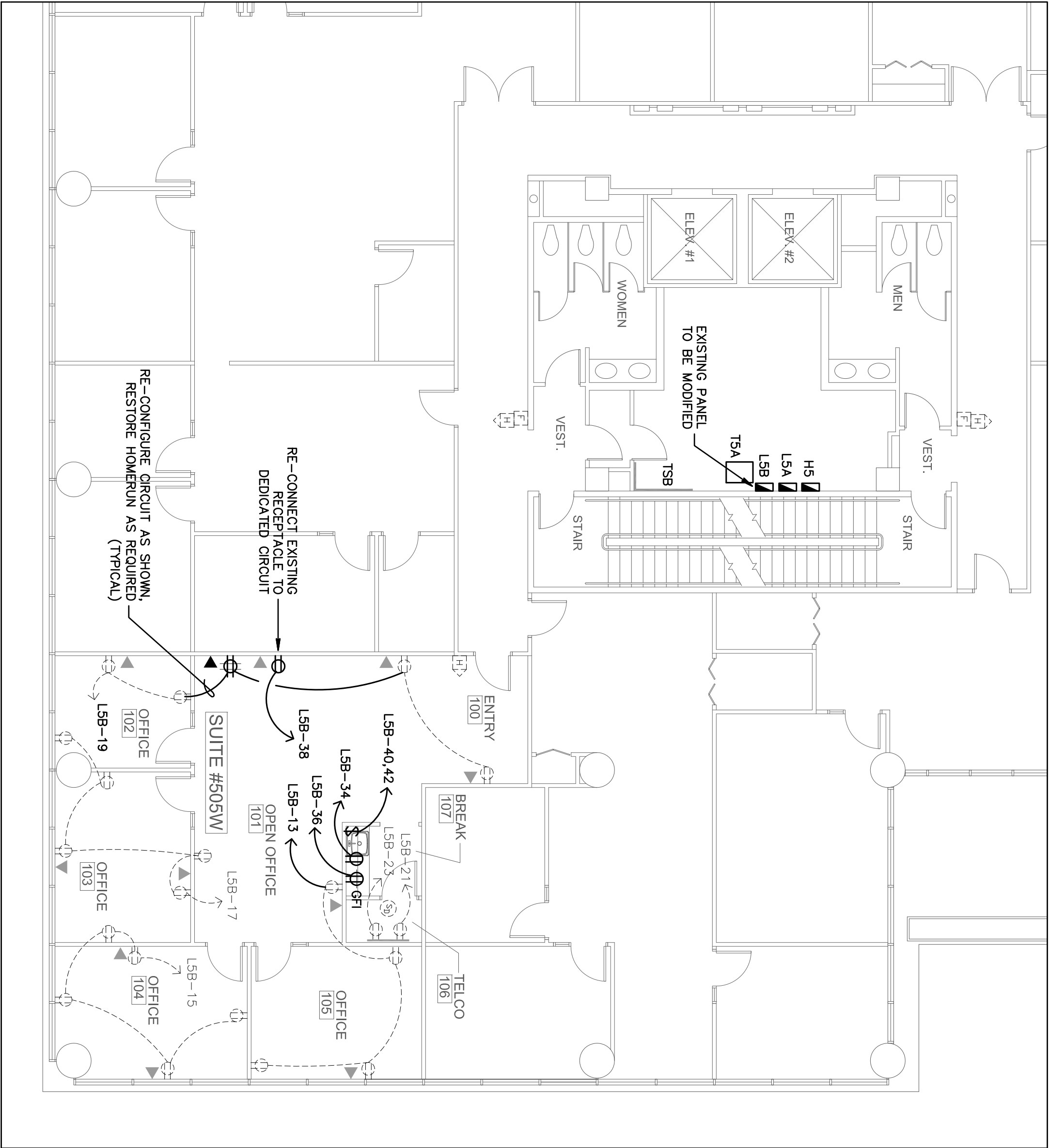
- ① EXISTING CIRCUITS TO REMAIN AS IS, SHOWN FOR REFERENCE ONLY.
- ② EXISTING SPARE CIRCUIT BREAKER TO BE RE-USED AS SHOWN.
- ③ EXISTING CIRCUIT TO BE MODIFIED AS SHOWN ON FLOOR PLAN.



LIGHTING FLOOR PLAN



EXISTING ELECTRICAL FLOOR PLAN



PROPOSED ELECTRICAL FLOOR PLAN

CUMMINGS & LOCKWOOD

GOLDEN BEAR PLAZA
11760 US HIGHWAY ONE #505W
PALM BEACH GARDENS, FL 33408

PROJECT NUMBER GBP28

REVISIONS

1	
2	
3	
4	
5	

DRAWN BY DR

CD

12-15-10

birse design inc.

6300 woodland lakes drive
palm beach gardens, fl 33418

phone 561-249-4001
fax 772-409-8684
AA26001615

Gilman & Associates, Inc.
MECHANICAL & ELECTRICAL ENGINEERS
129 N. FEDERAL HIGHWAY SUITE 202
Lake Worth, FL 33460 C.A.#009078
(561) 582-9010 Fax (561) 582-9211
RONALD D. GILMAN P.E. #37933

PROJ.# 10-036

THIS SET OF PLANS IS THE PROPERTY OF GILMAN & ASSOCIATES, INC. IT IS TO BE USED ONLY FOR THE PROJECT AND SITE SPECIFICALLY IDENTIFIED HEREON. IT IS NOT TO BE REPRODUCED OR TRANSMITTED IN ANY FORM OR BY ANY MEANS, ELECTRONIC OR MECHANICAL, INCLUDING PHOTOCOPYING, RECORDING, OR BY ANY INFORMATION STORAGE AND RETRIEVAL SYSTEM, WITHOUT THE WRITTEN PERMISSION OF GILMAN & ASSOCIATES, INC.

