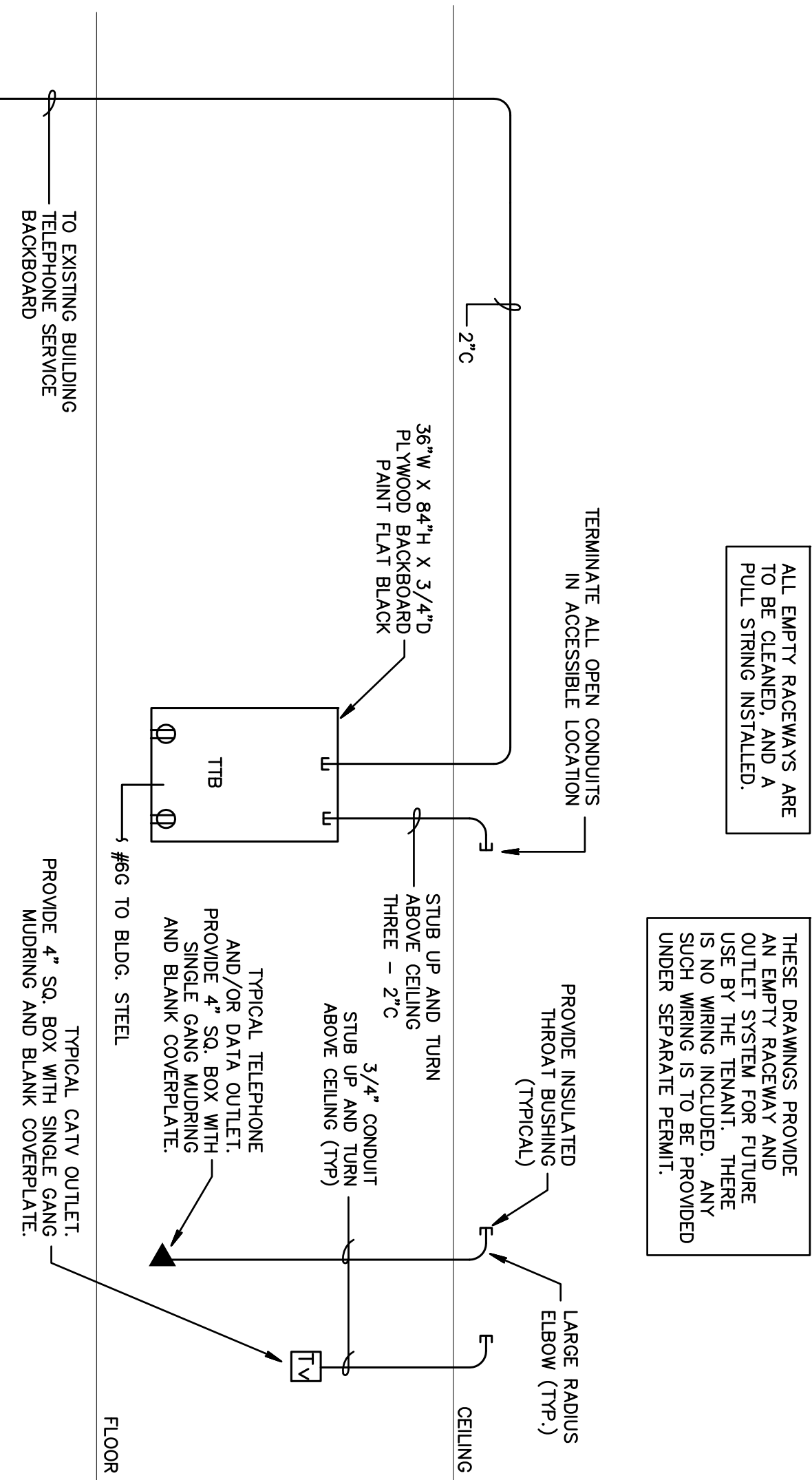


POWER RISER DIAGRAM – PARTIAL

MARK	TYPE	MOUNT	LAMP	VOLT	MANUFACTURER	CATALOG	NOTES
A	PARABOLIC TRIREFLECTOR	RECESSED	C3P-032 T8/41K	120	COLUMBIA	PA224-332G-MA36- S-3EPU-GLR	92W
	EXIT LIGHT	SURFACE	BY MFG.	120	DUAL LTTE	LXLRWE	① ②
	EMERGENCY LIGHTING	SURFACE	BY MFG.	120	DUAL LTTE	LZ2	②

- ① PROVIDE SINGLE DR. DUAL FACE, WALL OR CEILING MOUNT, AS SHOWN ON PLANS.
② CONNECT FIXTURES TO UNSWITCHED HOT LEG OF LOCAL LIGHTING CIRCUIT.
③ PROVIDE BATTERY/INVERTER BACKUP FOR 90 MINUTES IN ACCORDANCE WITH NFPA REQUIREMENTS.
④ CONNECT FIXTURES TO UNSWITCHED HOT LEG OF LOCAL LIGHTING CIRCUIT.



COMMUNICATIONS RISER DIAGRAM

GENERAL ELECT. AG													MAIN BUS: 200 AMP		
SERVICE: 120/208 3Ø 4W													NEUTRAL: FULL		
MOUNTING: FLUSH													LUGS: ONLY		
POLES: 42													A.I.C. 10K		
DEM. KVA	OTHER KVA	TRIP-POLE	CON-DUIT	WIRE	REMARKS	CKT. NO.	CKT. NO.	REMARKS	WIRE CON-DUIT	TRIP-POLE	OTHER LUGS	DEM. KVA			
0.8		20-1	1/2	12	LIGHTING	1	2	RECEPTACLES	12	1/2	20-1	0.9			
1.0		20-1	1/2	12	LIGHTING	3	4					0.9			
	1.2	20-1	1/2	12	COPY MACHINE	5	6					0.9			
	0.8	20-1	1/2	12	REFRIGERATOR	7	8					0.9			
	1.2	20-1	1/2	12	MICROWAVE	9	10					0.9			
	1.5	20-1	1/2	12	APPLIANCE CKT.	11	12	↑		↑		0.5			
	0.4	20-1	1/2	12	TELEPHONE BOARD	13	14	SPACE							
	0.4	20-1	1/2	12	SERVER	15	16	SPACE							
	0.2	20-1	1/2	12	DAMPER MOTORS	17	18	SPACE							
	20-1				SPARE	19	20	SPACE							
	20-1				SPARE	21	22	SPACE							
	20-1				SPARE	23	24	SPACE							
	1.5	20-2	1/2	12	CU-2	25	26	SPACE							
						27	28	SPACE							
	0.4	20-2	1/2	12	AHU-2	29	30	SPACE							
						31	32	SPACE							
						33	34	SPACE							
	(3.3)	30-3	1/2	10	CU-1	35	36	SPACE							
						37	38	SPACE							
	7.4	50-2	3/4	8	AHU-1	39	40	SPACE							
						41	42	SPACE							
1.8	15.0											5.0			

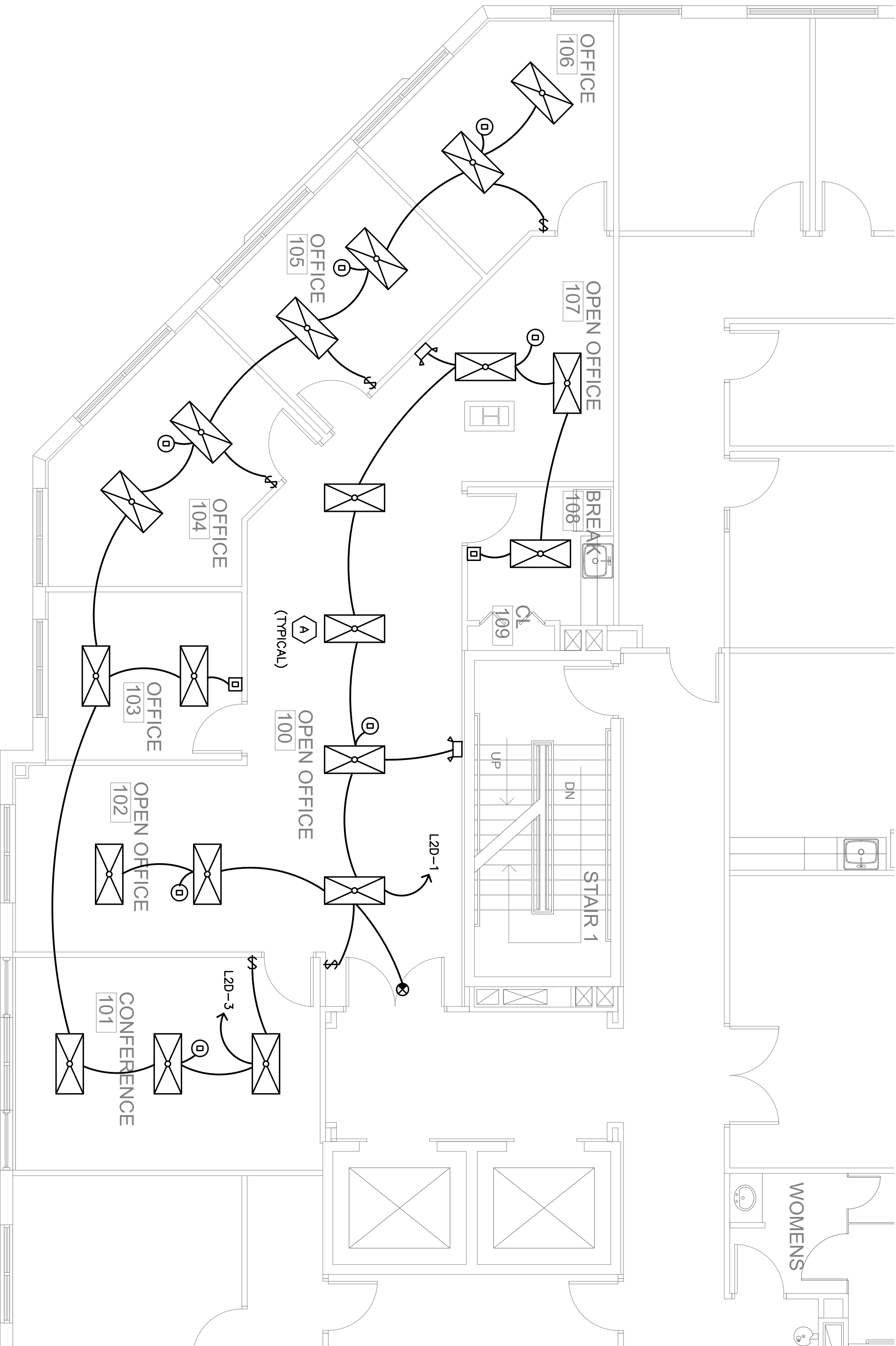
NO-DEMAND LOAD:

1.8 X 1.25 = 2.3 KVA

20.0

TOTAL DEMAND LOAD: 22.3 KVA = 62 AMPS

① CONDENSING UNIT IS NON-COINCIDENT LOAD WITH LARGER HEAT STRIP IN AIR HANDLER.



(PROPOSED) FLOOR PLAN - LIGHTING

Gilman & Associates, Inc.
MECHANICAL & ELECTRICAL ENGINEERS
129 N. FEDERAL HIGHWAY SUITE 202
Lake Worth, FL 33460 C.A.*009078
(561) 582-0210 Fax (561) 582-8212
RONALD D. GILMAN P.E. *37933

PROJ. # 11-012

SPEC SUITE #210

GARDENS POINTE
3507 KYOTO GARDENS DR
PALM BEACH GARDENS, FL 33410

PROJECT NUMBER GP11

REVISIONS

- 1
- 2
- 3
- 4
- 5

DRAWN BY DR

CD

05/05/11

birse design inc.

5300 woodland lakes drive
palm beach gardens, fl 33418

phone 561-249-4001
fax 772-409-8684
AA26001615

Bd

E-2