

ELECTRICAL LEGEND

	LIGHTING FIXTURE IDENTIFICATION		ELECTRICAL PANELBOARD
	RECTANGULAR LIGHTING FIXTURE - AS NOTED		MOTOR LOAD
	RECTANGULAR LIGHTING FIXTURE - EXISTING		CIRCUIT HOME RUN TO PANELBOARD OR AS INDICATED
	ROUND LIGHTING FIXTURE		CONDUIT CONCEALED
	EXIT LIGHT WITH EMERGENCY POWER BATTERY BACKUP		SPECIAL CIRCUIT AS NOTED
	EMERGENCY LIGHTING FIXTURE WITH BATTERY BACKUP		CAPPED CONDUIT
	DUPLEX RECEPT - 20 AMP (18" A.F.F.)		TELEVISION OUTLET (18" A.F.F.)
	DUPLEX RECEPT - 20 AMP (18" A.F.F.)		TELEPHONE/DATA OUTLET (18" A.F.F.)
	DUPLEX RECEPT MOUNTED ABOVE COUNTER - 20 AMP (44" A.F.F.)		TEL/DATA OUTLET FLUSH FLOOR MOUNTED
	DUPLEX RECEPT FLUSH FLOOR MOUNTED - 20 AMP		EXISTING DUPLEX RECEPTACLE TO REMAIN.
	SPECIAL PURPOSE RECEPT (18" A.F.F.) - MATCH EQUIPMENT PROVIDED		EXISTING TELEPHONE/DATA OUTLET BOX TO REMAIN
	QUAD-POLE RECEPT - 20 AMP (18" A.F.F.)		EXISTING DEVICE TO REMAIN, UNLESS NOTED OTHERWISE
	SINGLE POLE TOGGLE SWITCH, 48" AFF		EXISTING DEVICE, RELOCATED AS SHOWN
	3-WAY TOGGLE SWITCH, 48" AFF		DEDICATED OUTLET
	SLIDE TYPE DIMMER SWITCH, WATTAGE AS REQUIRED, 48" AFF		
	JUNCTION BOXES		
	FUSIBLE DISCONNECT (SWITCH POLES, AMPS/FUSES AS SHOWN)		
	MOTOR RATED SWITCH (WITH OVERLOADS)		

NEW FIRE ALARM DEVICES ARE TO BE COMPATIBLE WITH EXISTING SYSTEMS. PROVIDE ADDITIONAL HORNS AND STROBES AS REQUIRED TO MEET AUDIBLE AND VISIBLE REQUIREMENTS OF NFPA 72, ADA, AND NFPA 101. FIELD VERIFY POINT OF CONNECTION TO EXISTING SYSTEM.

THE CONTRACTOR IS RESPONSIBLE FOR ENSURING THAT ALL NEW AND EXISTING ELECTRICAL SYSTEMS, FIXTURES, DEVICES, AND EQUIPMENT ARE IN GOOD WORKING ORDER. REPAIR AS NEEDED.

FIRE ALARM LEGEND

	MANUAL PULL STATION 48" AFF
	WALL MOUNT SPEAKER/STROBE 80" AFF TO BOTTOM
	ADA COMPLIANT STROBE LIGHT 80" AFF TO BOTTOM
	DUCT SMOKE DETECTOR W/O RELAY
	CONTROL MODULE OUTPUT RELAY
	FIRE ALARM POWER SUPPLY

AUDIBLE ALARMS SHALL HAVE A MINIMUM LEVEL OF 15 DBA IN EXCESS OF THE AMBIENT SOUND LEVEL OF THE ROOM, AND SHALL OTHERWISE BE IN ACCORDANCE WITH FCC 11-4.28.2.

VISUAL ALARMS SHALL HAVE A MINIMUM LEVEL OF 75 CANDOLA AND SHALL OTHERWISE BE IN ACCORDANCE WITH FCC 11-4.28.3.

PROVIDE A RE-CERTIFICATION OF THE FIRE ALARM SYSTEM UPON COMPLETION OF WORK. COORDINATE WITH THE BUILDING'S FIRE ALARM SERVICE PROVIDER - SIMPLEX AT 561-277-4140 (BOB CROSS)

Gilman & Associates, Inc.
MECHANICAL & ELECTRICAL ENGINEERS
807 NORTH LAKESIDE DRIVE
Lake Worth, FL 33460 C.A.*009078
(561) 582-0210 Fax (561) 582-8212
RONALD D. GILMAN P.E. *37933

PROJ.# 12-028

birse design inc.

5300 woodland lakes drive
palm beach gardens, fl 33418
phone: 561-249-4001
fax: 772-409-8684
AA26001615

Bd

PFS ADVISORS

1400 CENTREPARK
1400 CENTREPARK DR #900
WEST PALM BEACH, FL

PROJECT NUMBER CP33

REVISIONS

1	
2	
3	
4	
5	

DRAWN BY GD

CD

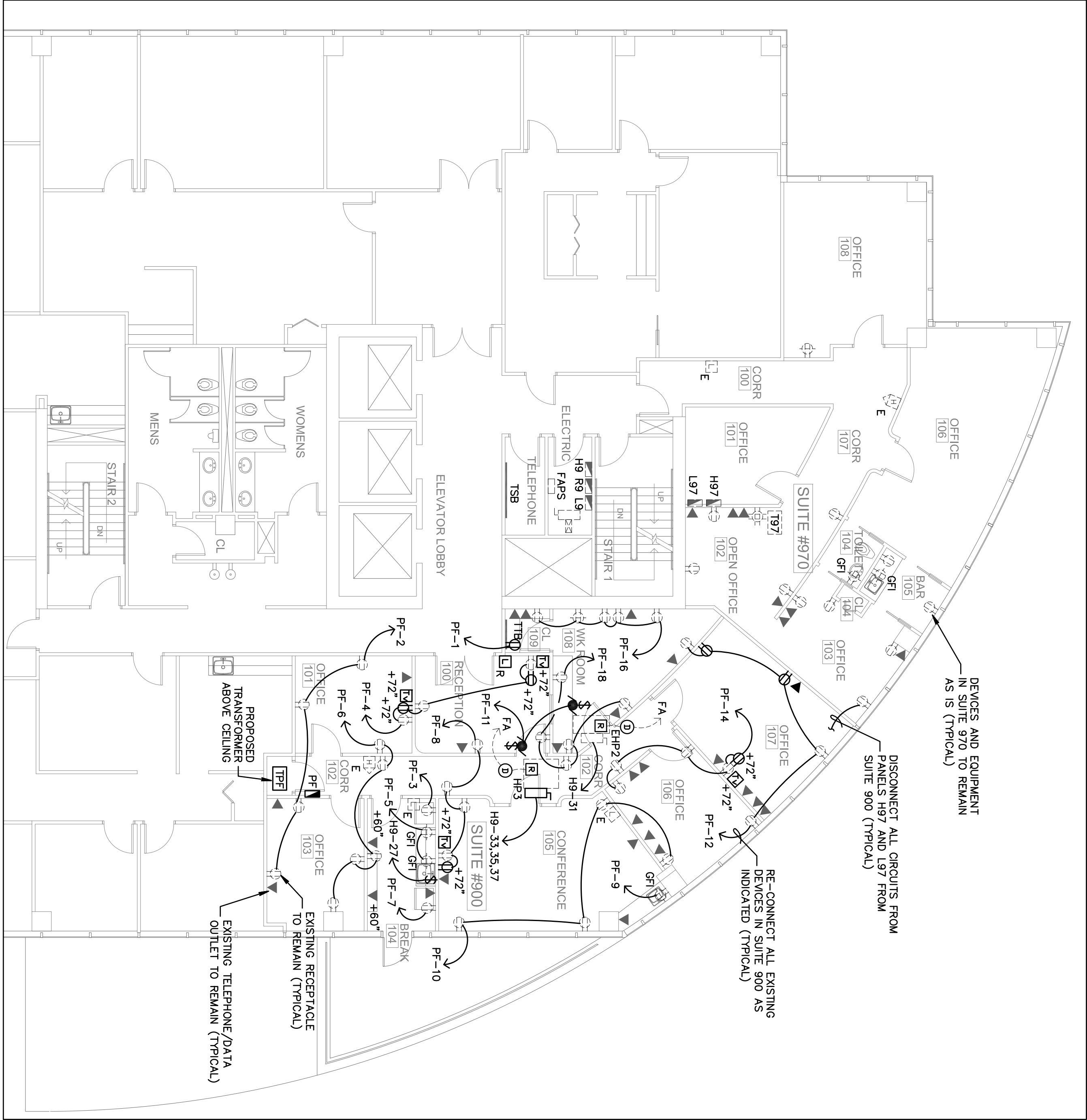
9/4/12

E-1



EXISTING ELECTRICAL FLOOR PLAN

SCALE: 1/8" = 1'-0"



PROPOSED ELECTRICAL FLOOR PLAN

SCALE: 1/8" = 1'-0"