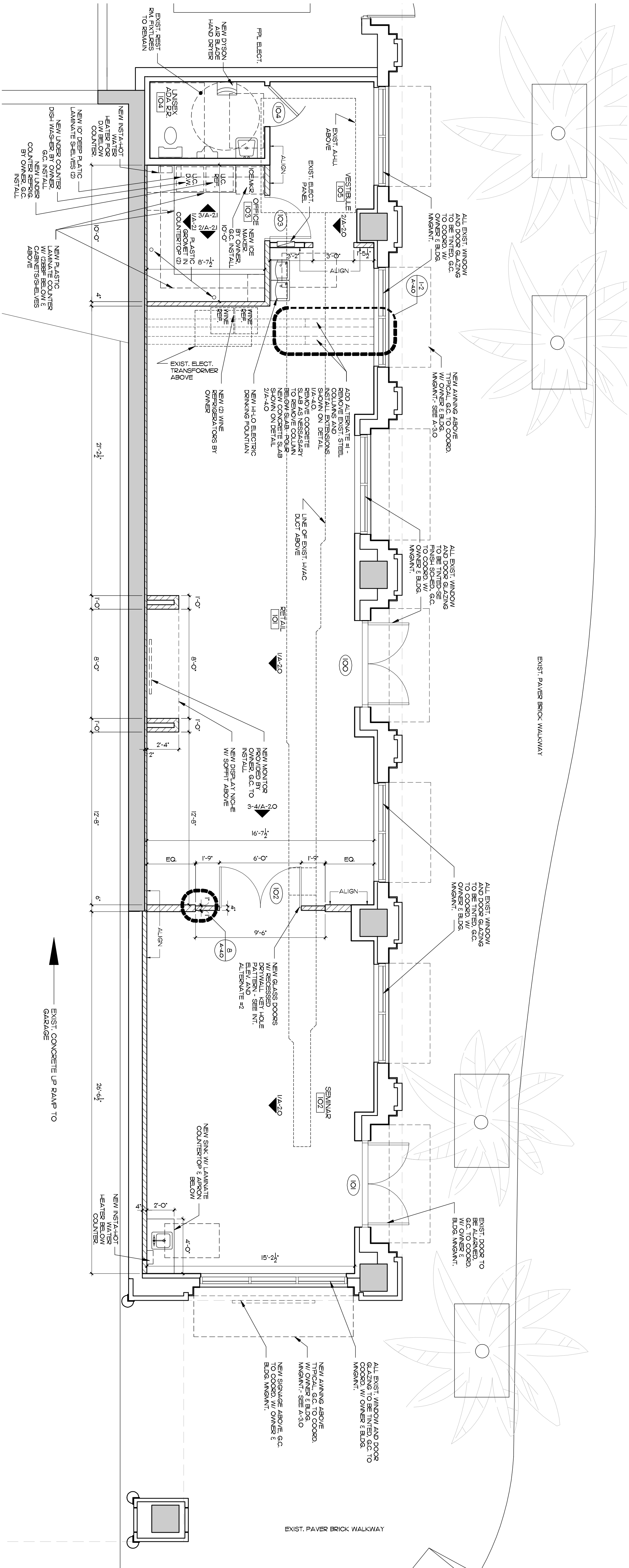
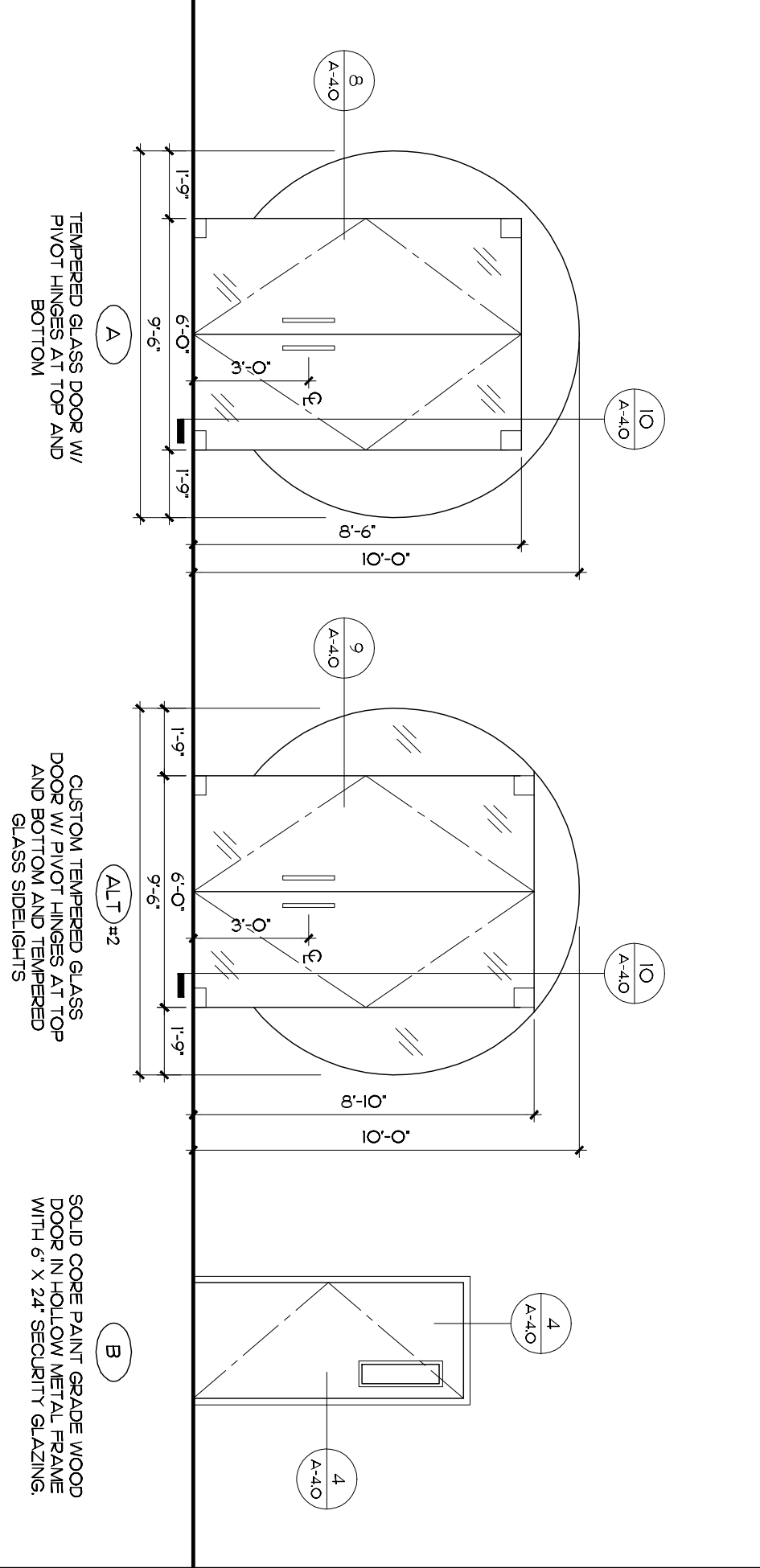


DOOR SCHEDULE									
DOOR MARK	ROOM LOCATION	DOOR			FRAME			DETAILS	
		WIDTH	HEIGHT	TKL MATL	FINISH TYPE	MATL FINISH	OWNER	HEAD	JAMB
100	MAIN ENTRY	8'-0"	8'-0"	---	ANOD. ETR	---	EXISTING	---	---
101	N. ENTRY	8'-0"	8'-0"	---	ANOD. ETR	---	---	---	---
102	REPAIRS	8'-0"	8'-0"	---	GLASS INOXE	A	---	8'-0-4.0	8'-0-4.0
103	OFFICE	3'-0"	6'-6"	1 3/4"	WOOD PAINT	B	ALUM. PAINT	KEYCODE 4/4-4.0	4/4-4.0
104	REST ROOM	3'-0"	6'-6"	1 3/4"	WOOD PAINT	ETR	STEEL PAINT	PRIVACY	---

DOOR NOTES:

- DOOR HARDWARE AND NOTES (VERIFY MFR, FUNCTION, STYLE AND FINISH WITH OWNER PRIOR TO SUBMITTING HARDWARE SCHEDULE)
1. WOOD DOORS: ALL WOOD DOORS SHALL BE SOLID CORE PAINT GRADE. DOORS SHALL BE MANUFACTURED IN ACCORDANCE WITH ARCHITECTURAL WOODWORK INSTITUTE STANDARDS. REMAIN GRADE CONFORMING TO SECTION 3000 ARCHITECTURAL FLUSH DOORS, LATEST EDITION.
2. OFFICE DOOR 103: THE OFFICE DOOR IS TO HAVE MECHANICAL PUSH BUTTON ACCESS CONTROL, KABA LEO INC. W/ 626 FINISH OR APPROVED EQUAL. THESE HINGES 179 4-1/2" X 4-1/2" 626 FINISH.
3. SINKING DOOR 101: VERTICAL PULLS - ROCKWOOD MANUFACT. CO. 1-1/2" X 1/2" PULLS (BOTH SIDES) US 32169 OR APPROVED EQUAL. PIVOT HINGES - DORMA BOTTOM PIVOT, SATIN CHROME TOP AND BOTTOM PATCH - DORMA SATIN CHROME TRANSOM CLOSER - DORMA HASER HINGES 179 4-1/2" X 4-1/2" 626 FINISH.
4. RESTROOM DOOR 104: 4. SINKING PRIVACY LOCKSET AL SERIES, LITTEER 626 FINISH.
- W/68 WALL STOP 409 1/4 US 250
- ETR - EXISTING TO REMAIN

DOOR TYPES:



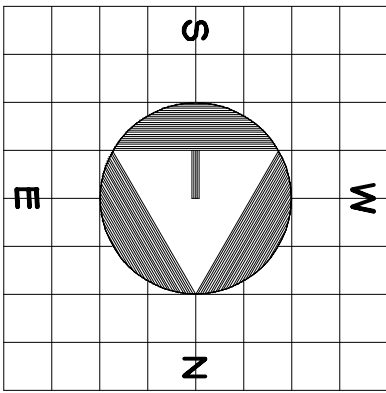
FLOOR PLAN  
SCALE 1/4"=1'-0"

WALL LEGEND

- EXISTING CONCRETE BLDG. WALL OR COLUMN
- EXISTING PARTITION TO REMAIN
- NEW 1/2" HIGH PARTITION UNLESS STATED OTHERWISE

FLOOR PLAN & DOOR SCHED.

SCALE 1/4" = 1'-0"



A-1.0

sheet title: FLOOR PLAN & INT. ELEVS  
file name: 101 CLEM-PP.DWG

project no: 09170  
date: 06/14/11  
drawn by: BJG4  
checked by: JG

revisions:

COPYRIGHT 2011 BY GS&P ARCHITECTS, INC. ALL RIGHTS RESERVED. NO PART OF THIS DOCUMENT MAY BE REPRODUCED OR TRANSMITTED IN ANY MANNER WITHOUT THE WRITTEN PERMISSION OF GS&P ARCHITECTS, INC.

TENANT IMPROVEMENTS FOR:

SUITE 150  
101 NORTH CLEMATIS STREET  
WEST PALM BEACH, FLORIDA



GLIDDEN • SPINA & PARTNERS  
ARCHITECTURE • INTERIOR DESIGN, INC.

PHONE : 561.684.6844 • FAX : 561.684.5594 • E-MAIL : info@gsp-architects.com  
1401 FORUM WAY, SUITE 100 • WEST PALM BEACH, FLORIDA 33401

FL License: #AA26001602

Keith M. Spina #AR13419

Benjamin John Glidden, III #AR6536