



AHARONIAN  
& ASSOCIATES INC.  
ARCHITECTS

310 George Washington Highway  
Suite 100  
Smithfield, Rhode Island  
0 2 9 1 7  
T 401-232-5010  
F 401-232-5080  
WWW.ARCH-ENG.COM

**DISCLAIMER**

OWNERSHIP AND USE OF DOCUMENTS, DRAWINGS AND SPECIFICATIONS ARE INSTRUMENTS OF PROFESSIONAL SERVICE AND SHALL REMAIN THE PROPERTY OF THE ARCHITECT. THESE DOCUMENTS ARE NOT TO BE USED, IN WHOLE OR IN PART, FOR ANY OTHER PROJECTS OR PURPOSES OR BY ANY OTHER PARTIES THAN THOSE PROPERLY AUTHORIZED BY CONTRACT WITHOUT THE EXPRESS WRITTEN AUTHORIZATION OF THE ARCHITECT.

**REVISIONS**

NUMBER	REMARKS	DATE

**FOR PERMIT ONLY**

**PROJECT TITLE**

**Cumberland  
FARMS**  
100 Crossing Blvd, Framingham, Massachusetts  
STORE #  
V0636  
22905 S.R. 7

**BOCA RATON, FL**  
Palm Beach County

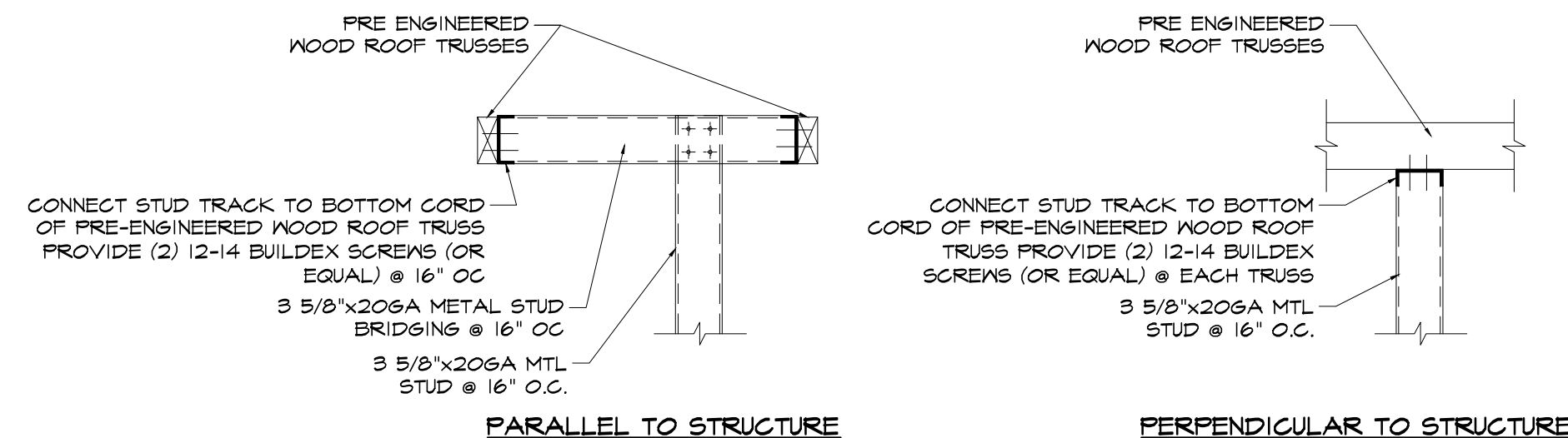
**DRAWING TITLE**

**SOFFIT DETAILS**

DATE AUG 29, 2012	PROJ NO 11117
DRAWN BY JW	CHECKED BY AZ

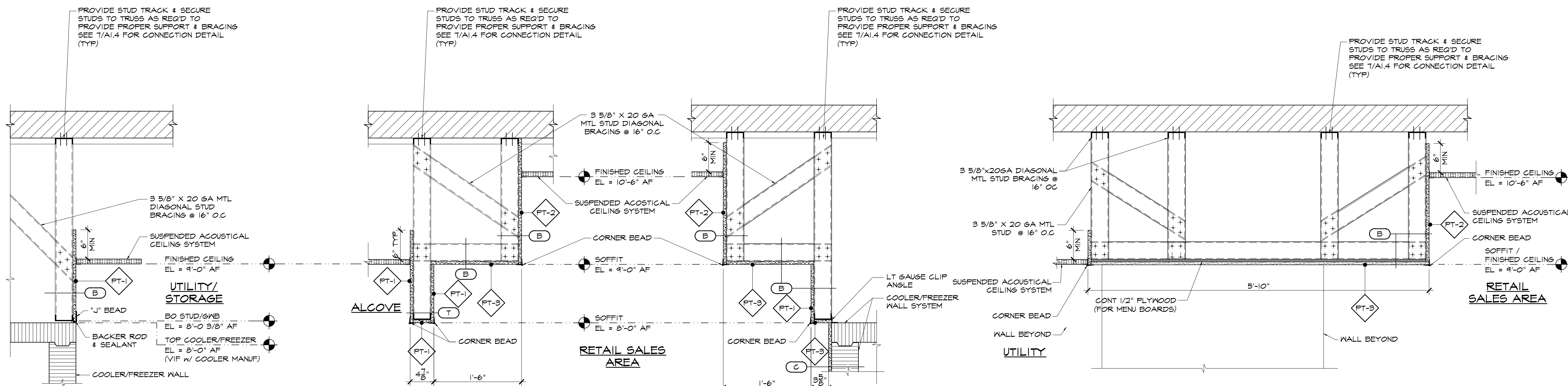
**DRAWING NUMBER**

**A1.4**



**7 SOFFIT CONNECTION DETAIL**

SCALE: 1" = 1'-0"



**6 SOFFIT DETAIL  
@ COOLER/FREEZER**

SCALE: 1" = 1'-0"

**5 SOFFIT DETAIL  
@ ALCOVE/RETAIL**

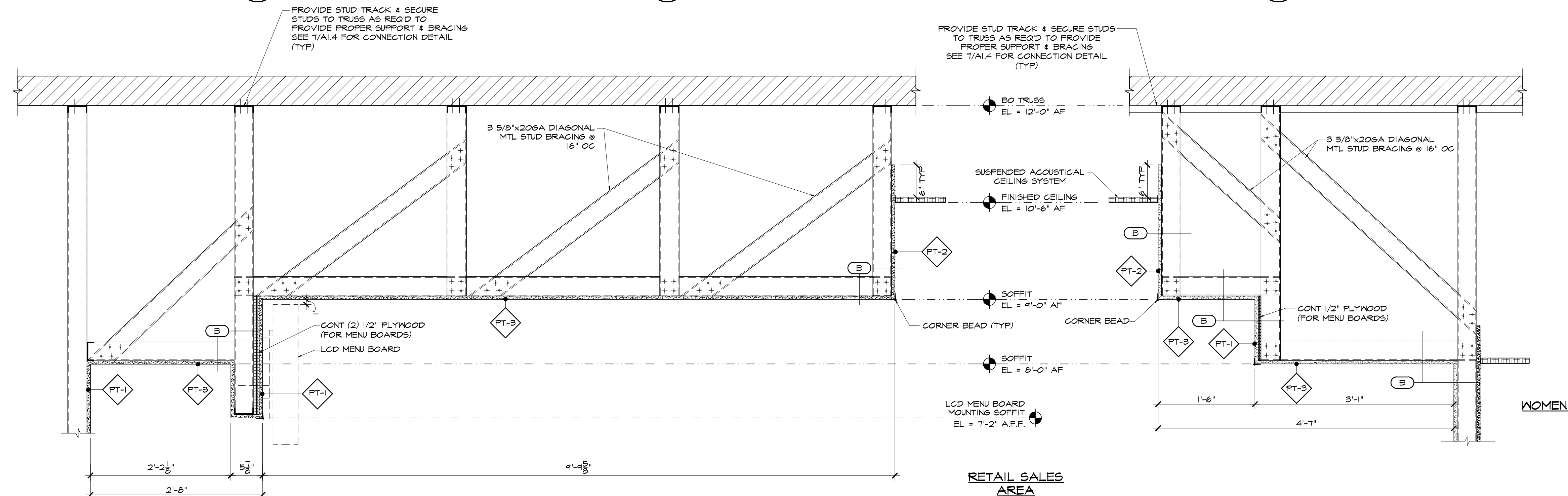
SCALE: 1" = 1'-0"

**4 TYPICAL SOFFIT DETAIL**

SCALE: 1" = 1'-0"

**3 SOFFIT DETAIL  
@ CHILL ZONE AREA**

SCALE: 1" = 1'-0"



**2 SOFFIT DETAIL  
@ CASHIER AREA**

SCALE: 1" = 1'-0"

**1 SOFFIT DETAIL  
@ COFFEE COUNTER**

SCALE: 1" = 1'-0"