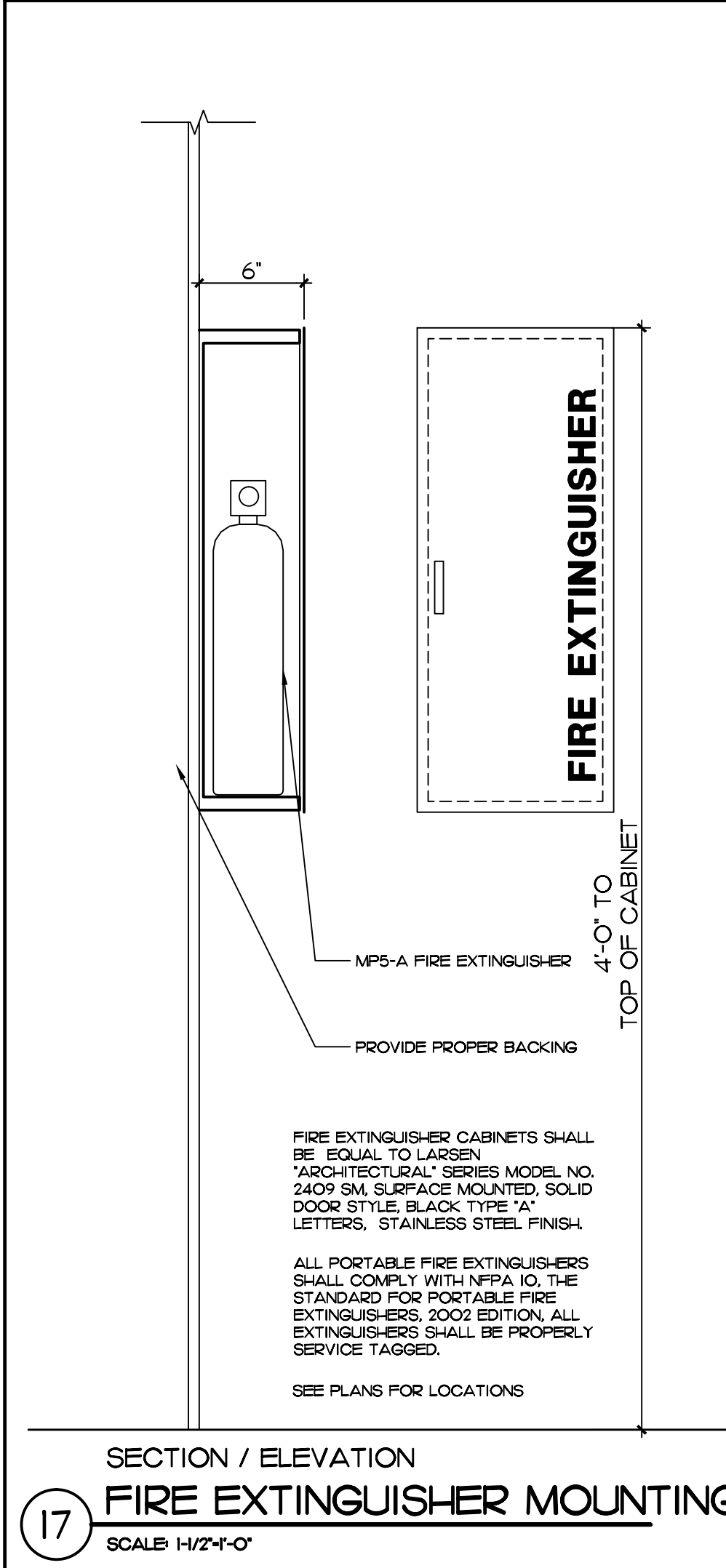
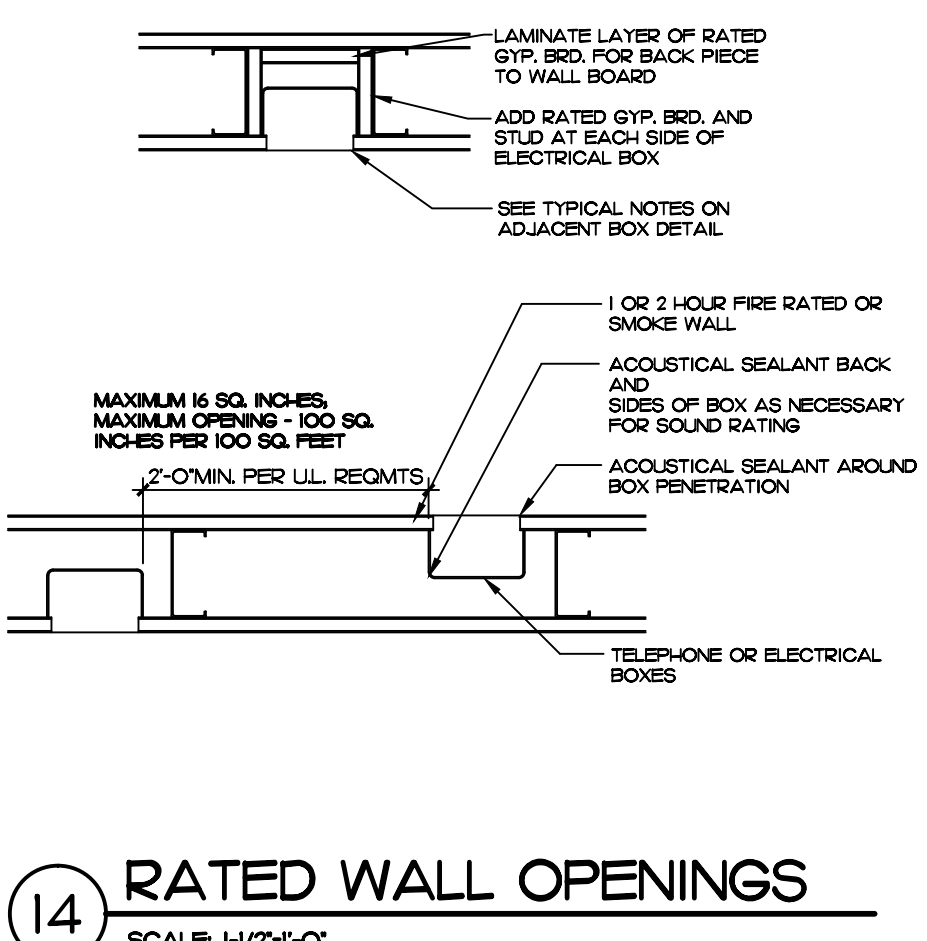


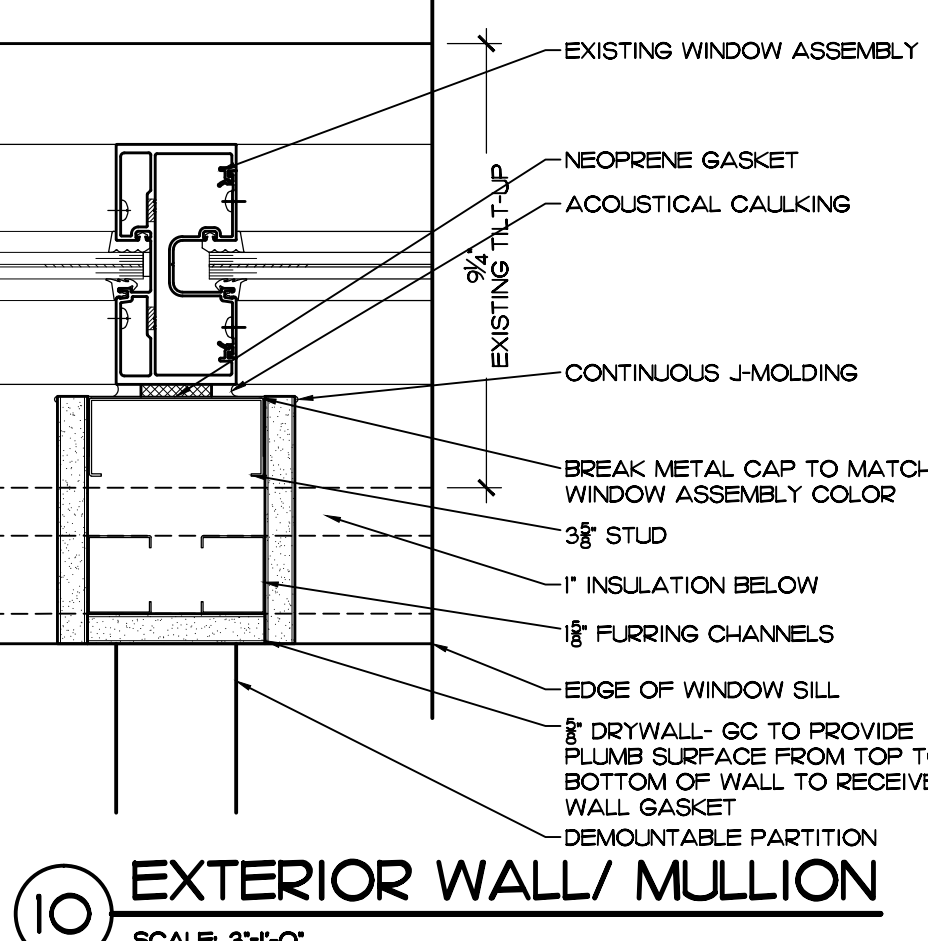
P:\13\STANLEY-ENCORE SUB LEASE @ ECOPLEX-1319A\NOV-FP.DWG, 1/10/2014 4:56:05 PM, 1:1



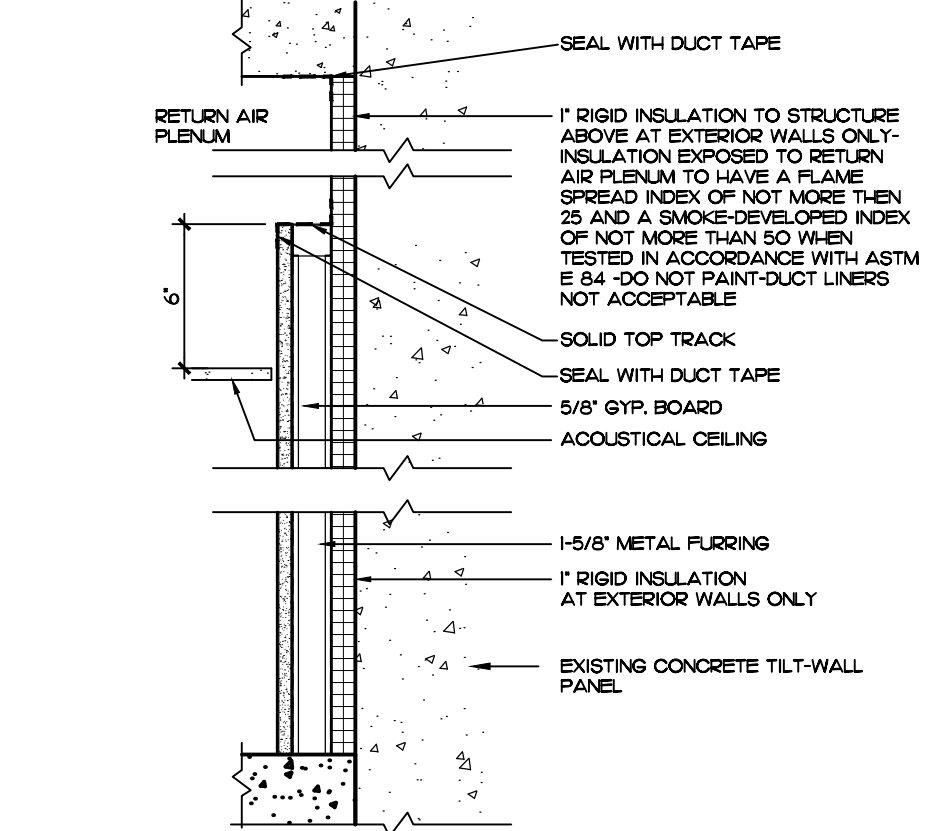
**13** MULTIPLE PIPE/CONDUIT PENETRATION AT 1 HR WALL  
SCALE: 1/2"=1'-0"



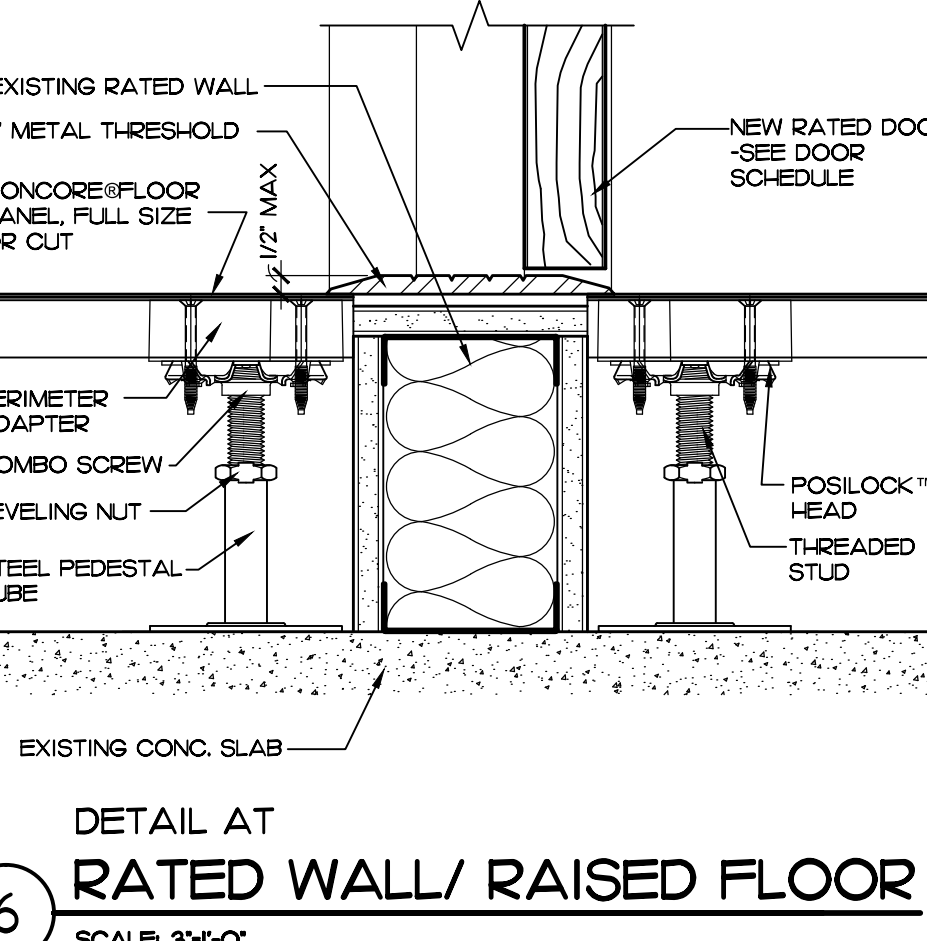
**9** DETAIL AT RATED WALL/ RAISED FLOOR  
SCALE: 3/4"=1'-0"



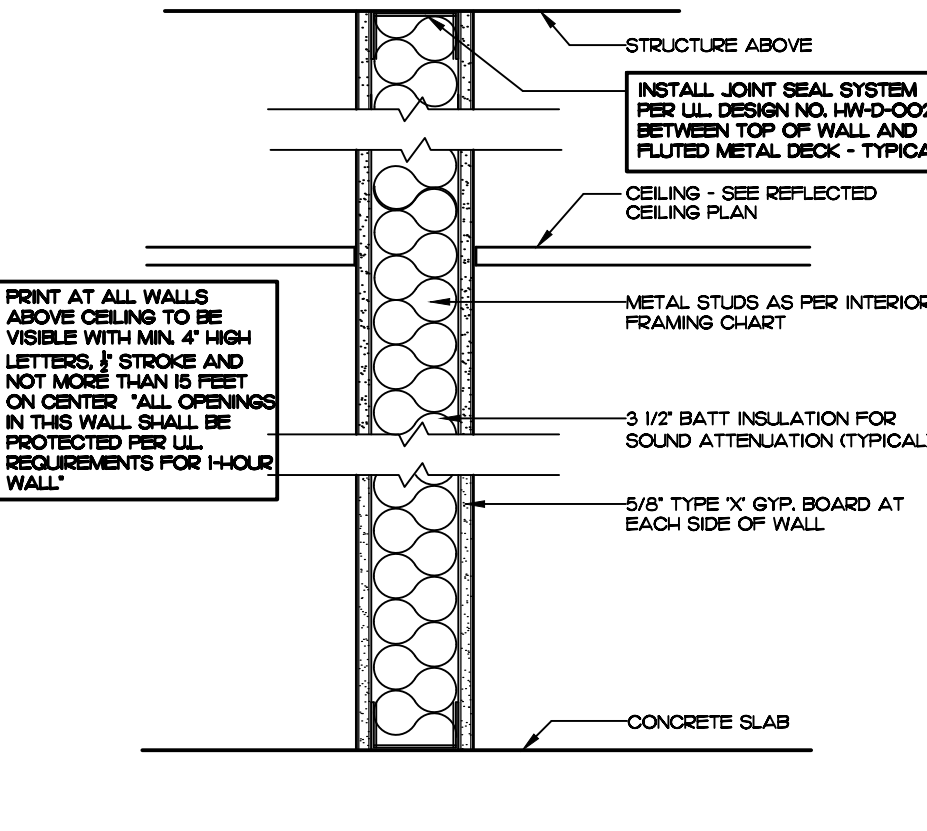
**11** PLAN SECTION AT TYPICAL DOOR JAMB  
SCALE: 1"=1'-0"



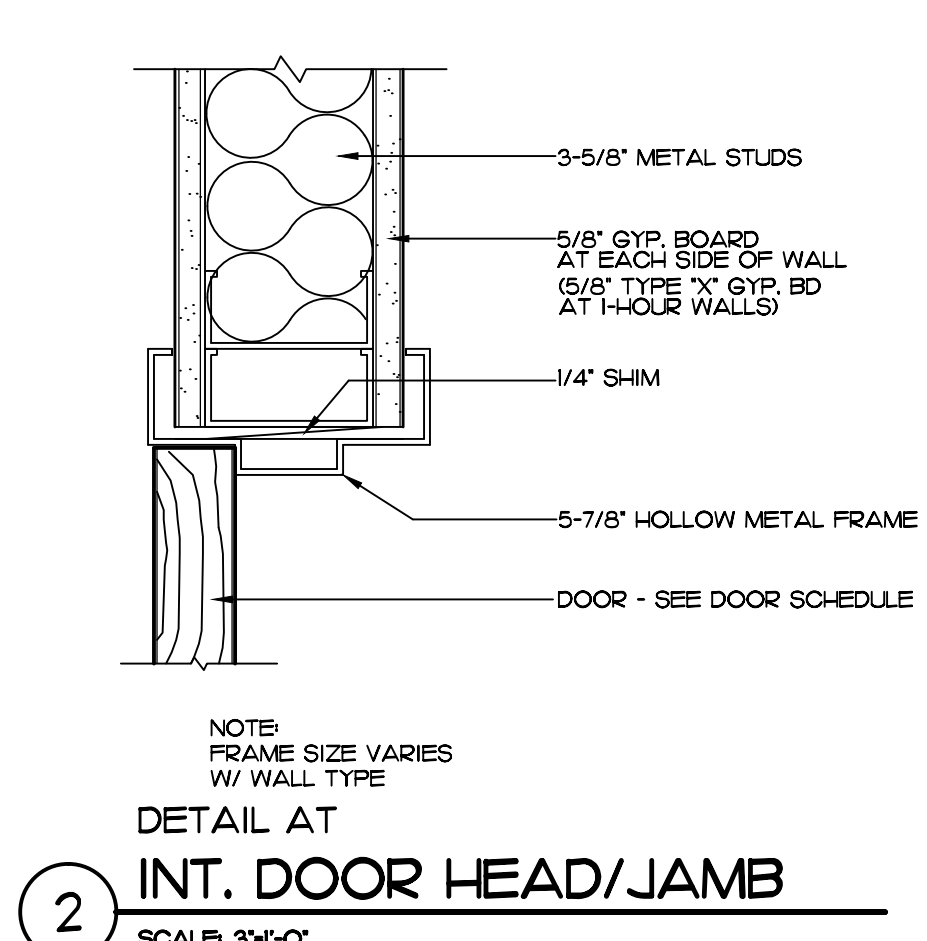
**5** DETAIL AT EXTERIOR WINDOW SILL  
SCALE: 3/4"=1'-0"



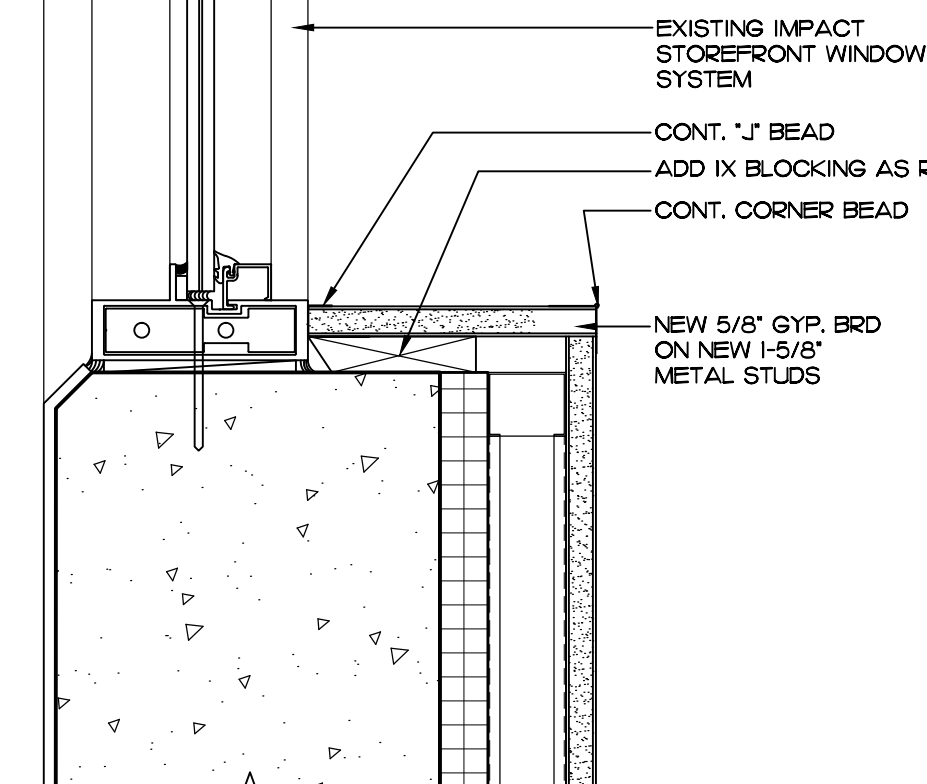
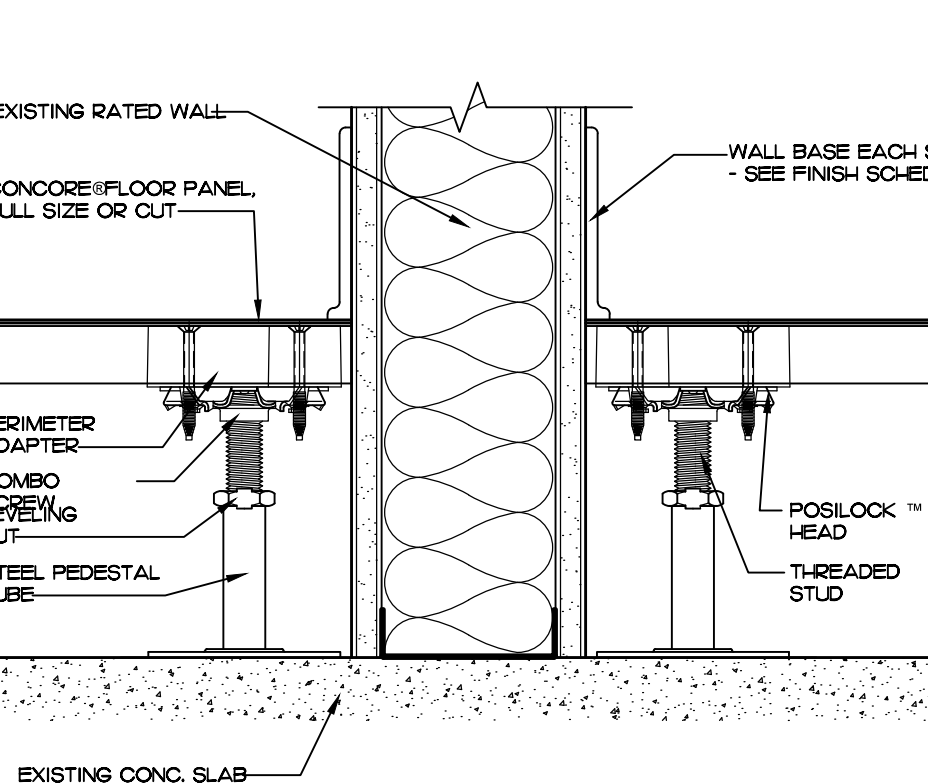
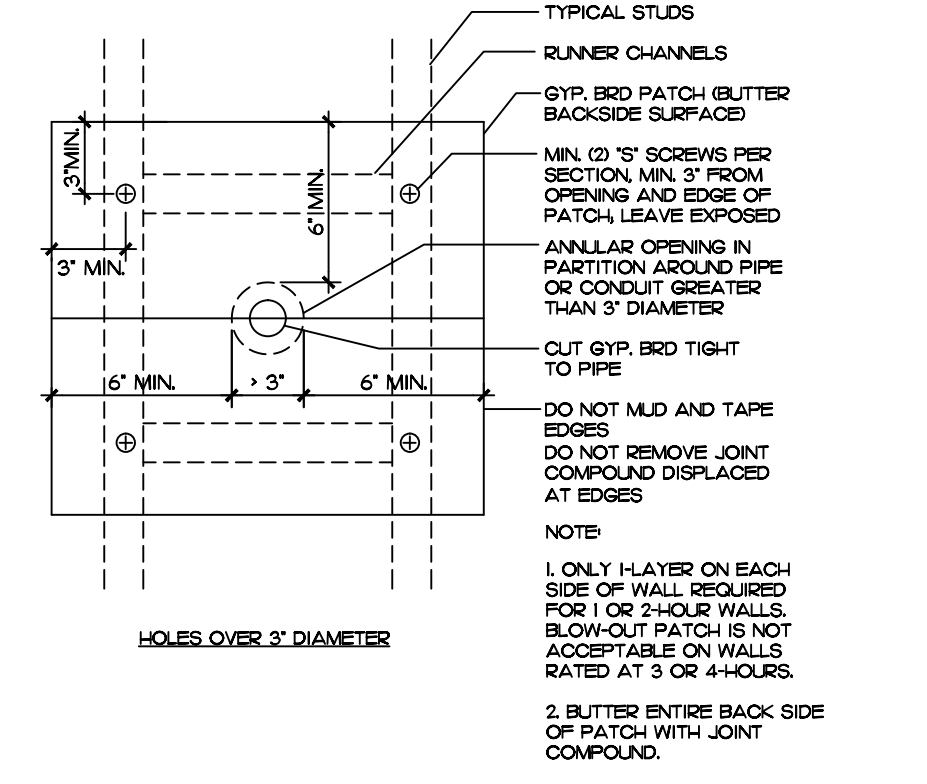
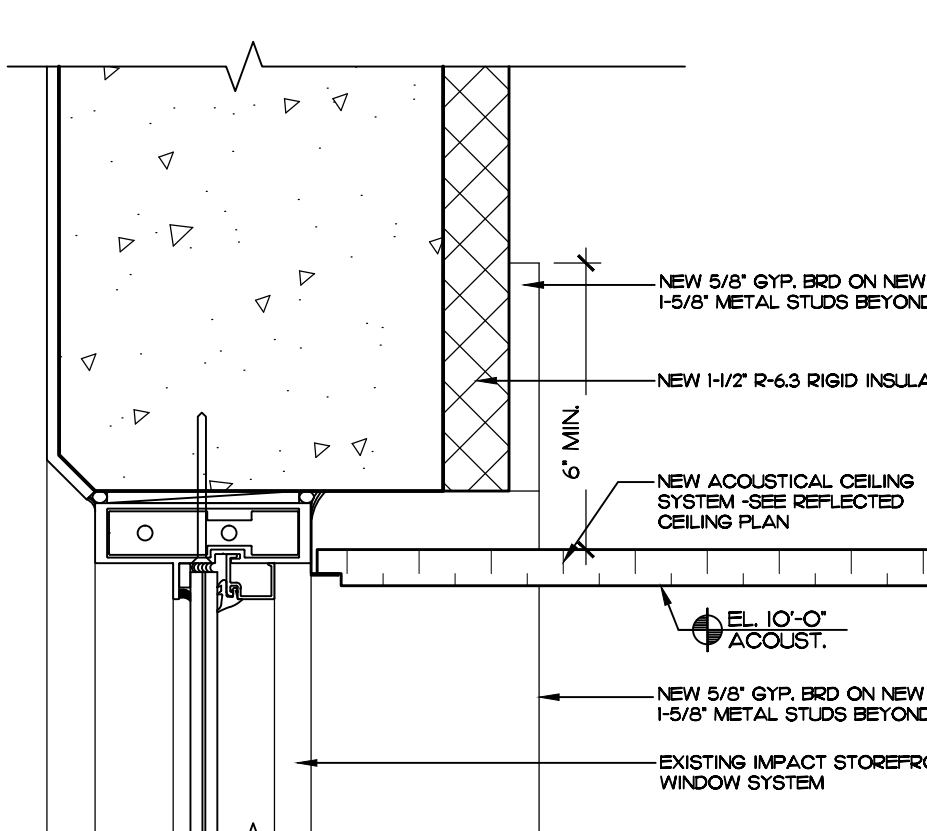
**7** PLAN DETAIL AT INTERSECTION AT 1-HR WALL  
SCALE: 3/4"=1'-0"



**1** INTERIOR FRAMING  
SCALE: N.T.S.



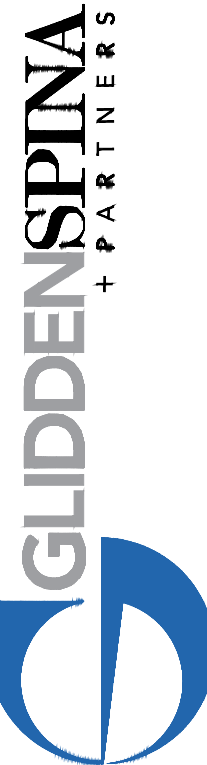
**3** SECTION DETAIL  
SCALE: 3/4"=1'-0"



INTERIOR FRAMING LIMITING HEIGHTS					
STUD DEPTH	STUD SPACING (IN.)	DESIGN LIMIT (PSF)	ALLOWABLE DEFLECTION	25 GAUGE FT. IN.	20 GAUGE FT. IN.
1 1/2"	16	5	L/360	8'-2"	8'-5"
2"	16	5	L/360	9'-10"	11'-2"
3 1/2"	16	5	L/360	12'-4"	14'-3"
4"	16	5	L/360	13'-4"	15'-11"
6"	16	5	L/360	17'-11"	21'-4"

NOTES:  
1. LIMITING HEIGHTS APPLY TO WALLS CONSTRUCTED WITH A MINIMUM 1/2" THICKNESS OF GYPSUM BOARD AND WITH A MINIMUM OF ONE FULL-HEIGHT LAYER ON BOTH SIDES OF THE STUD FRAMING.  
2. LIMITING HEIGHTS ARE BASED ON TESTS CONDUCTED WITH GYPSUM BOARD ATTACHED WITH SCREWS SPACED 12" O.C. TO FRAMING MEMBERS.  
3. THIS LIMITING HEIGHT DATA IS FROM ASTM C754. GSP PRESENTS THIS INFORMATION ONLY AS REFERENCE, AND WILL NOT BE RESPONSIBLE FOR THE PERFORMANCE OF WALLS BASED ON THIS TABLE. CONSULT CURRENT INFORMATION FROM ASTM C754 AND SSMA AND THE STUD MANUFACTURERS FOR LIMITING HEIGHT CHARACTERISTICS OF THEIR PARTICULAR PRODUCT.  
4. CONTRACTOR TO SUBMIT PRODUCT APPROVAL AND MANUFACTURERS SPECIFICATIONS TO ARCHITECT.

1401 FORUM WAY, SUITE #100  
WEST PALM BEACH, FLORIDA 33401  
561.684.6844 • Fax 561.684.5594  
gliddenspina.com  
FL Lic. # AA2602299



Tenant Improvements For:  
**NOVATIONS**  
Suite 410  
1641 Worthington Road  
West Palm Beach, Florida

COPYRIGHT 2012  
THESE DRAWINGS ARE FOR THE EXCLUSIVE USE OF GLIDDEN SPINA PARTNERS, INC. AND MAY NOT BE REPRODUCED, REPHOTOCOPIED OR USED IN ANY MANNER WITHOUT THE EXPRESS WRITTEN CONSENT OF GLIDDEN SPINA + PARTNERS, INC. ALL RIGHTS RESERVED.

sheet title: DETAILS  
file name: P:\08\SCESCO-806\ASCECO-FP.DWG  
project no: 13194  
date: 12/13/13  
drawn by: JGSC  
checked by: KS  
revisions: