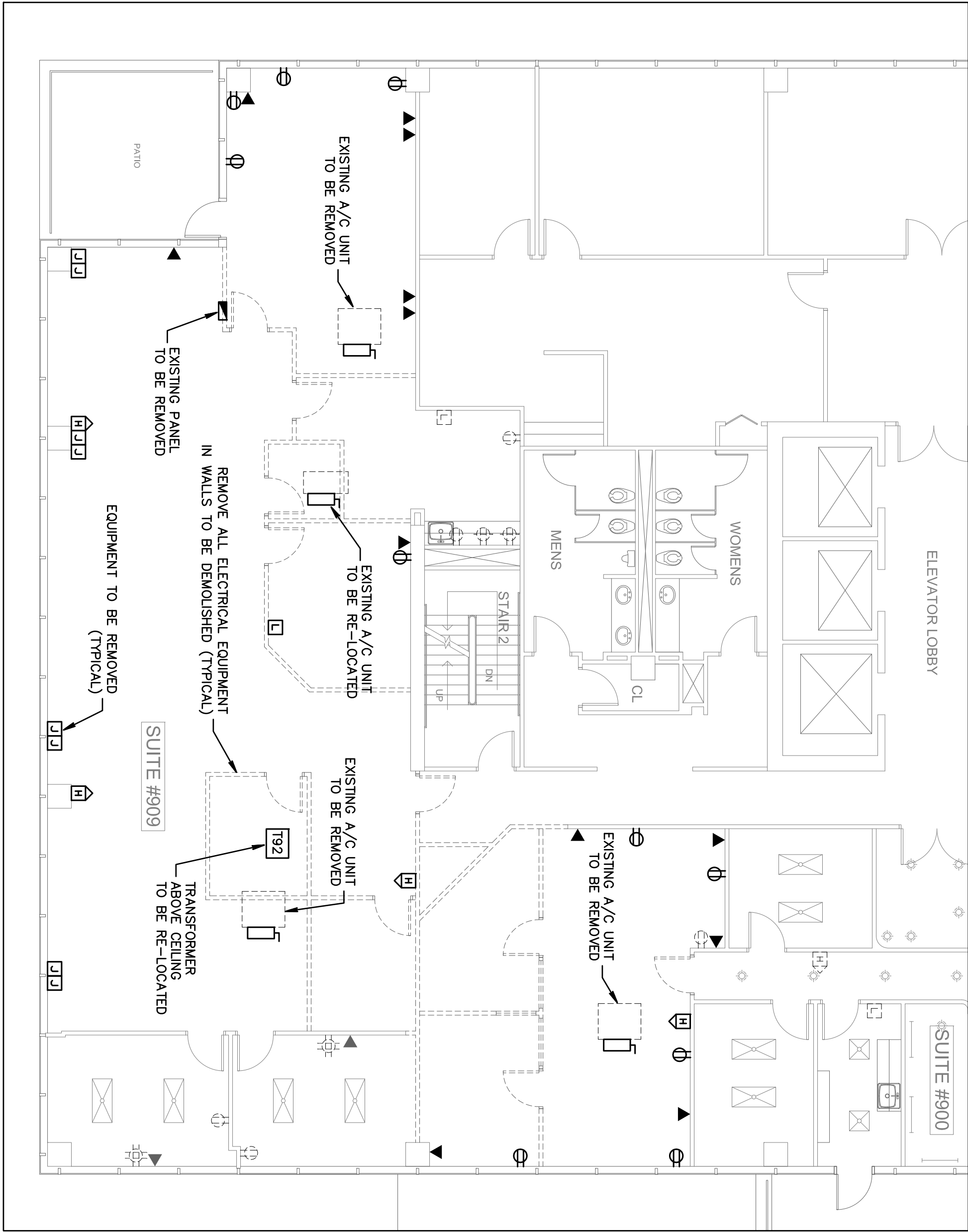


ELECTRICAL LEGEND

	LIGHTING FIXTURE IDENTIFICATION RECTANGULAR LIGHTING FIXTURE - AS NOTED RECTANGULAR LIGHTING FIXTURE - EXISTING ROUND LIGHTING FIXTURE EXIT LIGHT WITH EMERGENCY POWER BATTERY BACKUP EMERGENCY LIGHTING FIXTURE WITH BATTERY BACKUP DUPLEX RECEPT - 20 AMP (18" A.F.F.) SINGLE RECEPT - 20 AMP (18" A.F.F.) DUPLEX RECEPT MOUNTED ABOVE COUNTER - 20 AMP (44" A.F.F.) DUPLEX RECEPT FLUSH FLOOR MOUNTED - 20 AMP SPECIAL PURPOSE RECEPT (18" A.F.F. - MATCH EQUIPMENT PROVIDED) QUAD-POLE RECEPT - 20 AMP (18" A.F.F.) SINGLE POLE TOGGLE SWITCH, 48" AFF 3-WAY TOGGLE SWITCH, 48" AFF SLIDE TYPE DIMMER SWITCH, VATTAGE AS REQUIRED, 48" AFF JUNCTION BOXES FUSIBLE DISCONNECT (SWITCH POLES, AMPS/FUSES AS SHOWN) MOTOR RATED SWITCH (WITH OVERLOADS)	 ELECTRICAL PANELBOARD MOTOR LOAD CIRCUIT HOME RUN TO PANELBOARD OR AS INDICATED CONDUIT CONCEALED SPECIAL CIRCUIT AS NOTED CAPPED CONDUIT TELEVISION OUTLET (18" A.F.F.) TELEPHONE/DATA OUTLET (18" A.F.F.) TEL/DATA OUTLET FLUSH FLOOR MOUNTED EXISTING DUPLEX RECEPTACLE TO REMAIN EXISTING TELEPHONE/DATA OUTLET BOX TO REMAIN EXISTING DEVICE TO REMAIN, UNLESS NOTED OTHERWISE EXISTING DEVICE, RELOCATED AS SHOWN D DEDICATED OUTLET
--	---	---



FIRE ALARM LEGEND

	MANUAL PULL STATION 48" AFF WALL MOUNT SPEAKER/STROBE 80" AFF TO BOTTOM ADA COMPLIANT STROBE LIGHT 80" AFF TO BOTTOM DUCT SMOKE DETECTOR W/O RELAY CONTROL MODULE OUTPUT RELAY FIRE ALARM POWER SUPPLY
--	---

AUDIBLE ALARMS SHALL HAVE A MINIMUM LEVEL OF 15 DBA IN EXCESS OF THE AMBIENT SOUND LEVEL OF THE ROOM, AND SHALL OTHERWISE BE IN ACCORDANCE WITH FCC 11-4.28.2.
VISUAL ALARMS SHALL HAVE A MINIMUM LEVEL OF 75 CANDELA AND SHALL OTHERWISE BE IN ACCORDANCE WITH FCC 11-4.28.3.
PROVIDE A RE-CERTIFICATION OF THE FIRE ALARM SYSTEM UPON COMPLETION OF WORK.
COORDINATE WITH THE BUILDINGS FIRE ALARM SERVICE PROVIDER - SIMPLEX AT 561-277-4140 (BOB CROSS)



Gilman & Associates, Inc.
MECHANICAL & ELECTRICAL ENGINEERS
807 NORTH LAKESIDE DRIVE
Lake Worth, FL 33460 C.A.*009078
(561) 582-0210 Fax (561) 582-8212
RONALD D. GILMAN P.E. *37933

PROJ.# 12-021

Bd

birse design inc.

5300 woodland lakes drive
palm beach gardens, fl 33418
phone 561-249-4001
fax 772-409-8684
AA26001615

BOWEN MICLETTE BRITT

1400 CENTREPARK
1400 CENTREPARK DR
WEST PALM BEACH, FL

PROJECT NUMBER CP29

REVISIONS

1	
2	
3	
4	
5	

DRAWN BY GD

CD

7/13/12

E-1