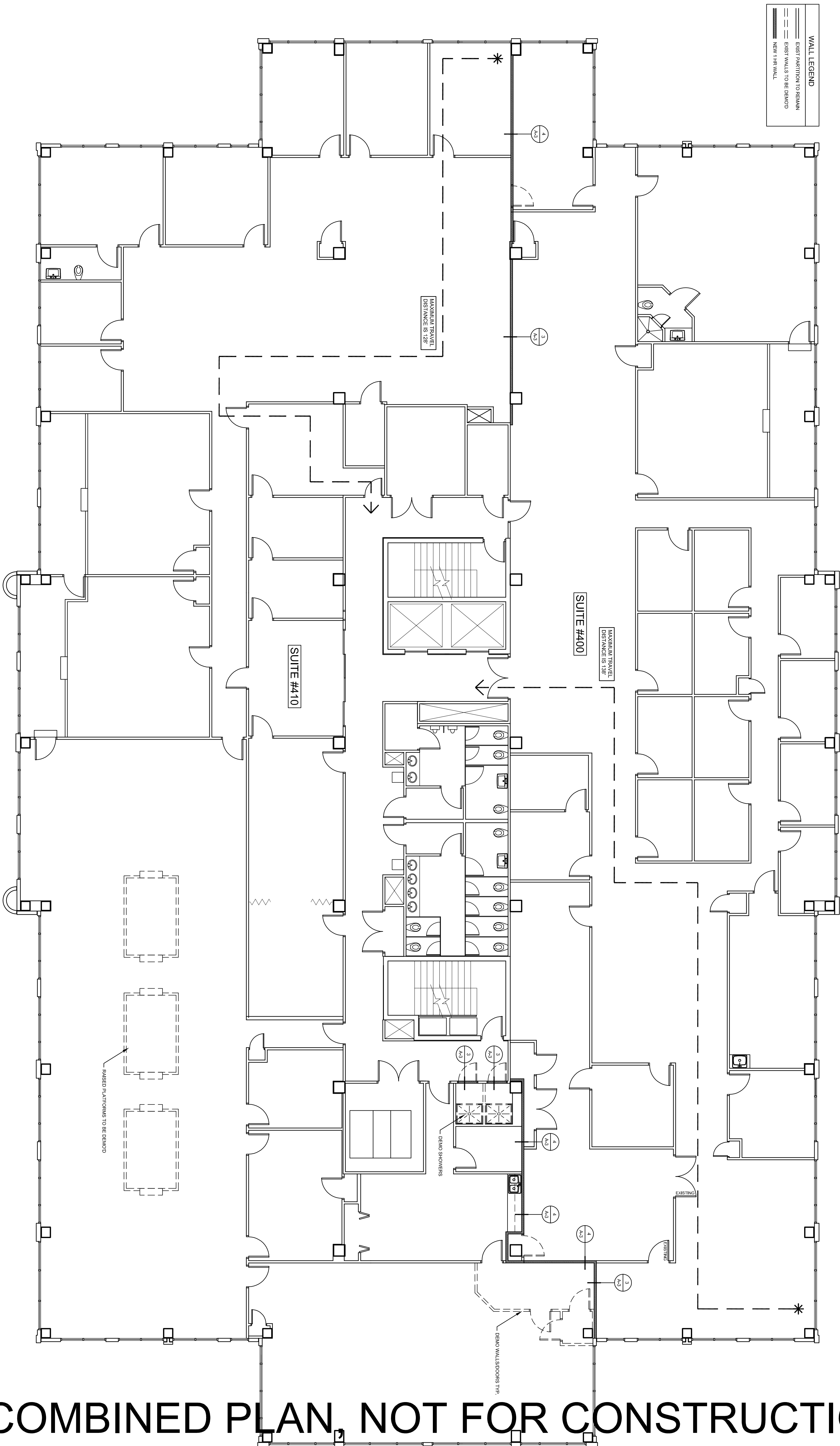


COMBINED PLAN, NOT FOR CONSTRUCTION



1. SUITE 440 TO BE DIVIDED INTO TWO SUITES AS PER I/A.3

2. PROVIDE NEW CEILING PARTITION AS PER I/A.4

3. MECHANICAL AND ELECTRICAL IMPROVEMENTS AS PER MEP DRAWINGS

1. SUITE 440 TO BE DIVIDED INTO TWO SUITES AS PER I/A.3

2. PROVIDE NEW CEILING PARTITION AS PER I/A.4

3. MECHANICAL AND ELECTRICAL IMPROVEMENTS AS PER MEP DRAWINGS

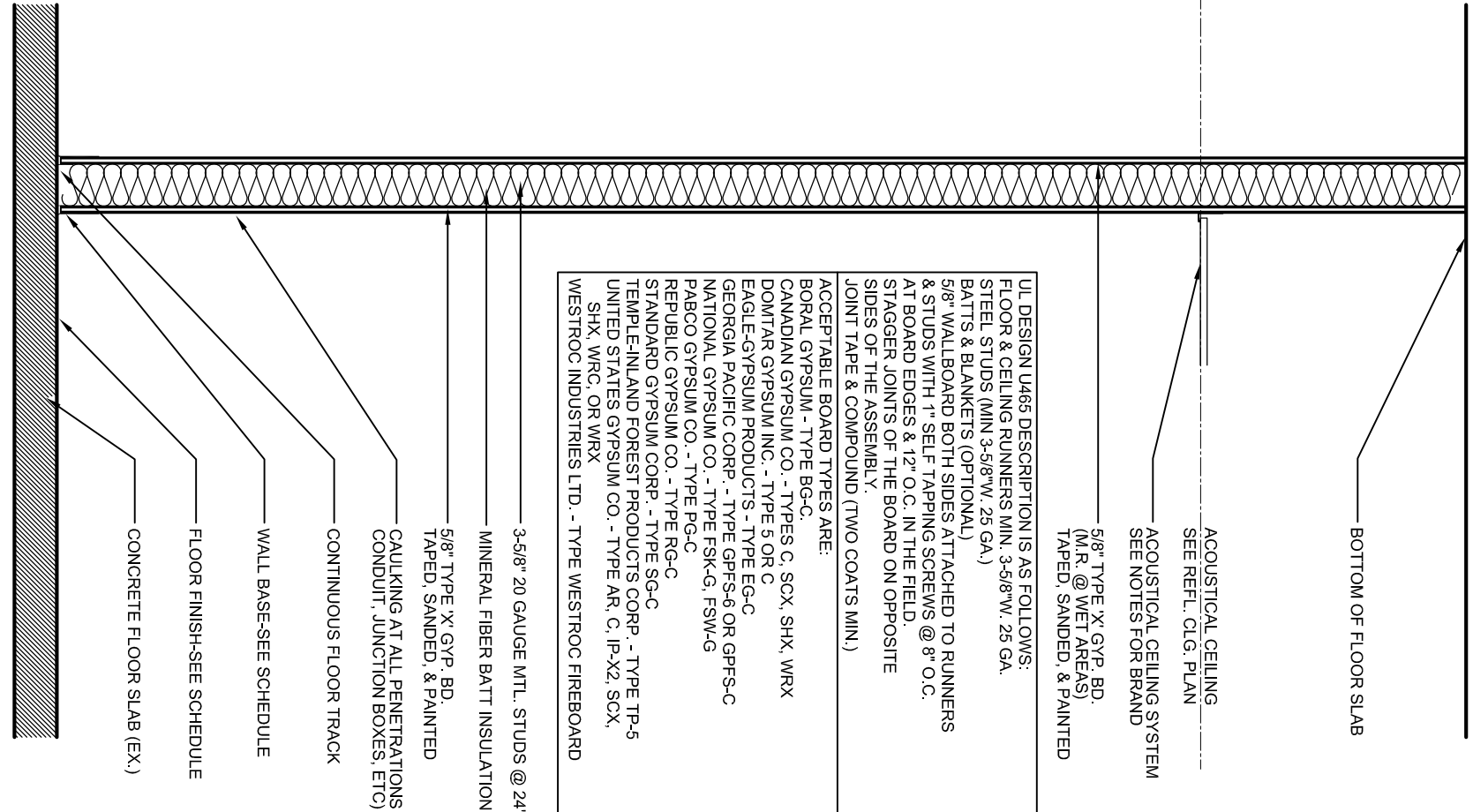
18" = 1'-0"

(PROPOSED) FLOOR PLAN

 - * STRUCTURES UNDERGOING CONSTRUCTION, ALTERATION OR DEMOLITION SHALL COMPLY WITH NFPA 241
 - * ACCUMULATIONS OF COMBUSTIBLE WASTE AND DUST DEBRIS SHALL BE REMOVED FROM THE STRUCTURE AND ITS IMMEDIATE VICINITY AT THE END OF THE SHIFT OR MORE FREQUENTLY AS NECESSARY FOR SAFE OPERATION
 - * EXIT AND ACCESS CORRIDORS ARE TO BE MAINTAINED AND REMAIN CLEAR AND UNOBSSTRUCTED
 - * THE MAIN BUILDINGS FIRE PROTECTION SYSTEMS SHALL BE MAINTAINED AND OPERATIONAL AT ALL TIMES
 - * CONTRACTOR TO PROVIDE ALTERNATE PRICING FOR THE FOLLOWING:
 - 1. REMOVE SHOWERS AND ALL ASSOCIATED PLUMBING, REMOVE DOORS AND TIL IN OPENING
 - 2. REMOVE BASED PLATFOMS IN GIVE BACK (HALL) PARTION AND ALL ASSOCIATED WIRING
 - 3. FLOOR AND REFRANT FLOORING AS REQUIRED

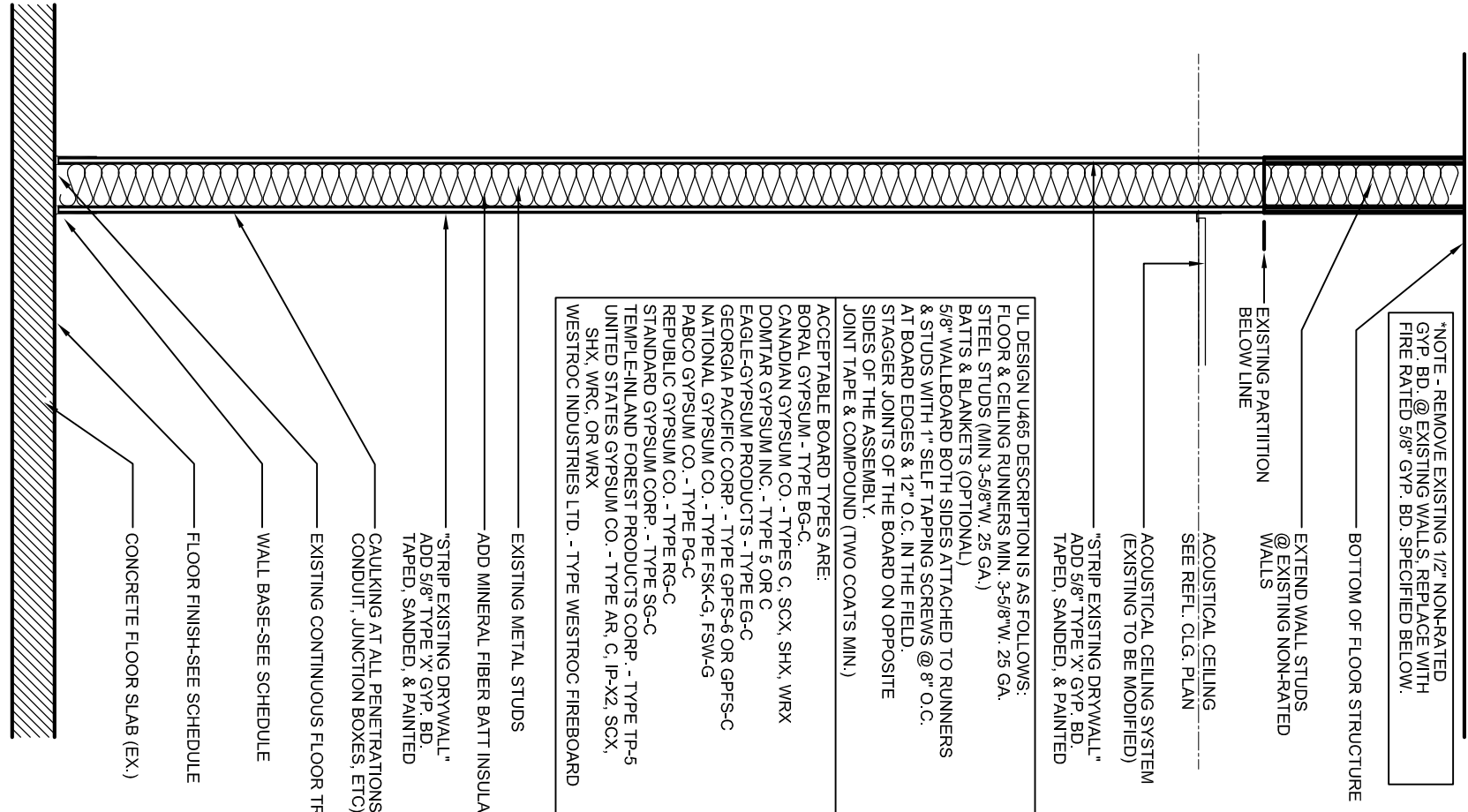
- * CONTRACTOR TO PROVIDE ALTERNATE PRICING FOR THE FOLLOWING:
 1. REMOVE SHOWERS AND ALL ASSOCIATED PLUMBING, REMOVE DOORS AND FILL IN OPENINGS
 2. REMOVE PAISED PLATFORMS IN GIVE BACK (#402) PORTION AND ALL ASSOCIATED WIRING PATCH AND REPAIR FINISHES/FLOOR AS REQUIRED

PROPOSED NOTES



UL DESIGN U465 (1HR)

3) WALL TYPE (DEMISING)
3/4" = 1'-0"



UL DESIGN U465 (1HR)

WALL