

A	NEW BUILT-IN CABINETS BY GC. BLOCKING TO BE PROVIDED BY GC
B	WALL MOUNTED TV LOCATION - G.C. TO PROVIDE FRT BACKING WITHIN WALL
C	NEW LOCKERS - G.C. TO PROVIDE PRODUCT SPECIFICATIONS/SHOP DRAWINGS FOR APPROVAL
D	NEW H2/O ELECT. DRINKING FOUNTAIN

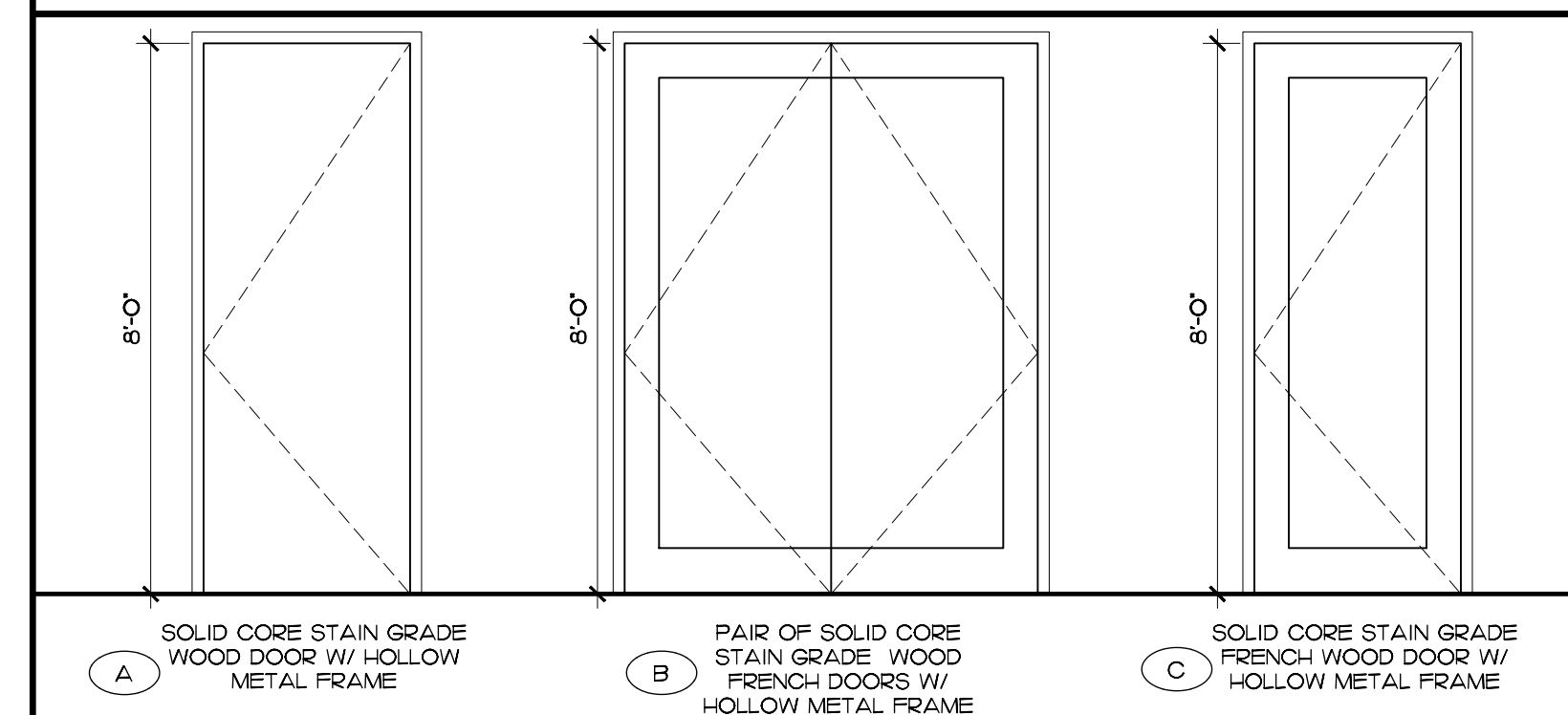
DOOR AND FRAME SCHEDULE										
DOOR NUMBER	DOOR TYPE	DOOR				FRAME		HWR GRP	NOTES	
		SIZE			FINISH	FIRE RATING LABEL				
		WD	HGT	THK			MATL			MATL
101	C	3'-0"	8'-0"	1 3/4"	WD	STAINED	H-M	--	A	--
102	C	3'-0"	8'-0"	1 3/4"	WD	STAINED	H-M	--	A	--
103	A	3'-0"	8'-0"	1 3/4"	WD	STAINED	H-M	--	E	--
103A	A	3'-0"	8'-0"	1 3/4"	WD	STAINED	H-M	--	C	--
104	C	3'-0"	8'-0"	1 3/4"	WD	STAINED	H-M	--	C	--
105	A	3'-0"	8'-0"	1 3/4"	WD	STAINED	H-M	--	D	--
107	A	3'-0"	8'-0"	1 3/4"	WD	STAINED	H-M	--	F	--
108	A	3'-0"	8'-0"	1 3/4"	WD	STAINED	H-M	--	F	--
110	A	3'-0"	8'-0"	1 3/4"	WD	STAINED	H-M	--	F	--

DOOR NOTES:

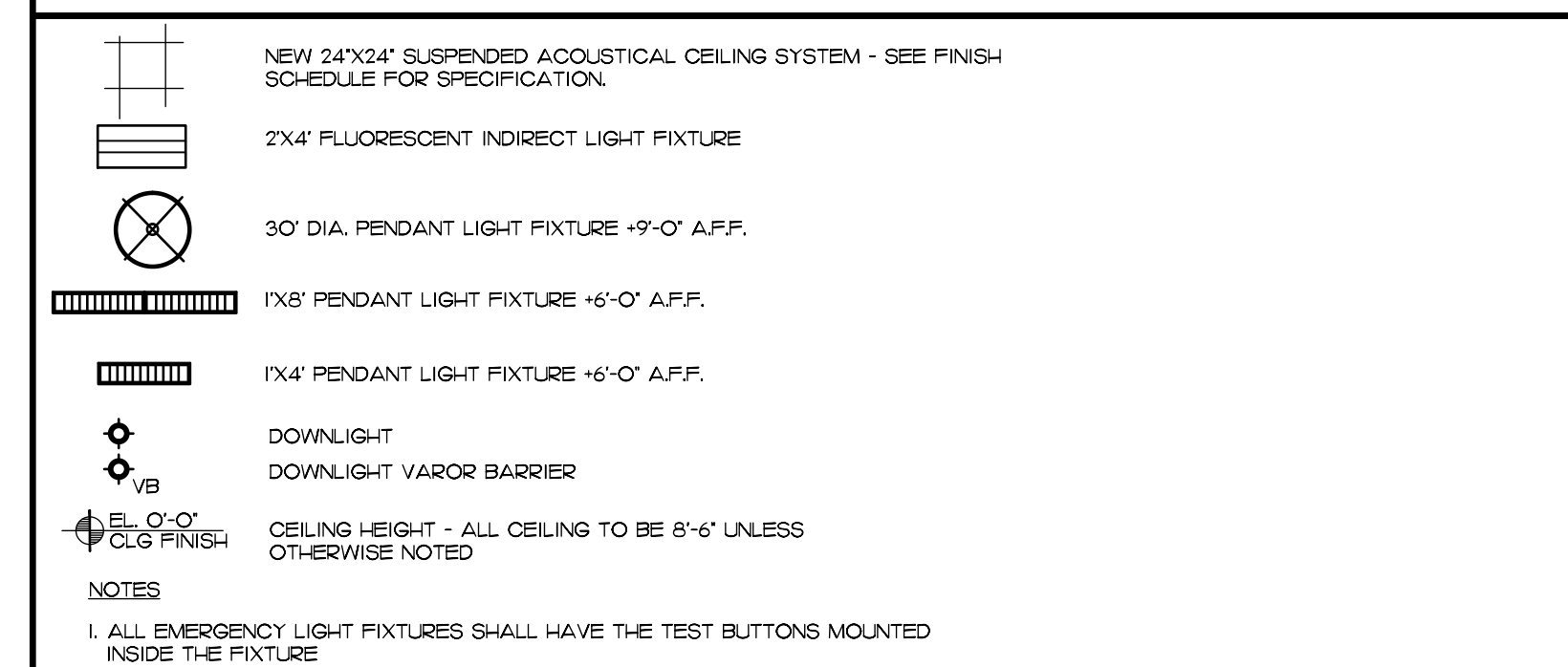
1. FINAL COORDINATION OF KEYING FUNCTIONS SHALL BE WITH TENANT, KEYING TO BE INCLUDED IN TOTAL PROJECT COSTS
2. ALL EXIT HARDWARE SHALL COMPLY WITH IFBFC 2007 W/ 2009 AMENDMENTS SECTION 10B.9
3. EXIT HARDWARE SHALL BE SCHLAGE/SERIES JUPITER LEVER, FINISH #626 SATIN CHROME
4. CLOSURES TO BE LON & FINISH TO MATCH LEVER
5. KINGS TO BE BY HAGER, FINISH US26D
6. SILENCERS TO BE BY HAGER
7. WALL STOP BY HAGER
8. FLUSH BOLT - HAGER
9. DOOR STOP BY GUNN-JOHNSON, FINISH US32D
10. ALL ACCESS-CONTROLLED EGRESS DOORS MUST COMPLY WITH FLORIDA FIRE PREVENTION CODE SECTION 7.21.6.2

HARDWARE SETS:			
A ¹	LEVER ENTRY/OFFICE - W511 HINGES 4 1/4"x4" - BB1279 SILENCER 307D WALL STOP 230W	B ¹	LEVER ENTRY/OFFICE - W511 HINGES 4 1/4"x4" - BB1279 SILENCER 307D DOOR STOP 410-S
		C ¹	LEVERSTOREROOM W581 HINGES 4 1/4"x4" - BB1279 SILENCER307D CLOSURE - LGN 2010 DOOR STOP 410-S
D ¹	LEVER PASSAGE SET - W101 HINGES 4 1/4"x4" - BB1279 SILENCER 307D WALL STOP 230W	E ¹	LEVER PASSAGE SET - W101 HINGES 4 1/4"x4" - BB1279 SILENCER 307D DOOR STOP 410-S
		F ¹	LEVER PRIVACY SET - W301 HINGES 4 1/4"x4" - BB1279 SILENCER 307D WALL STOP 230W

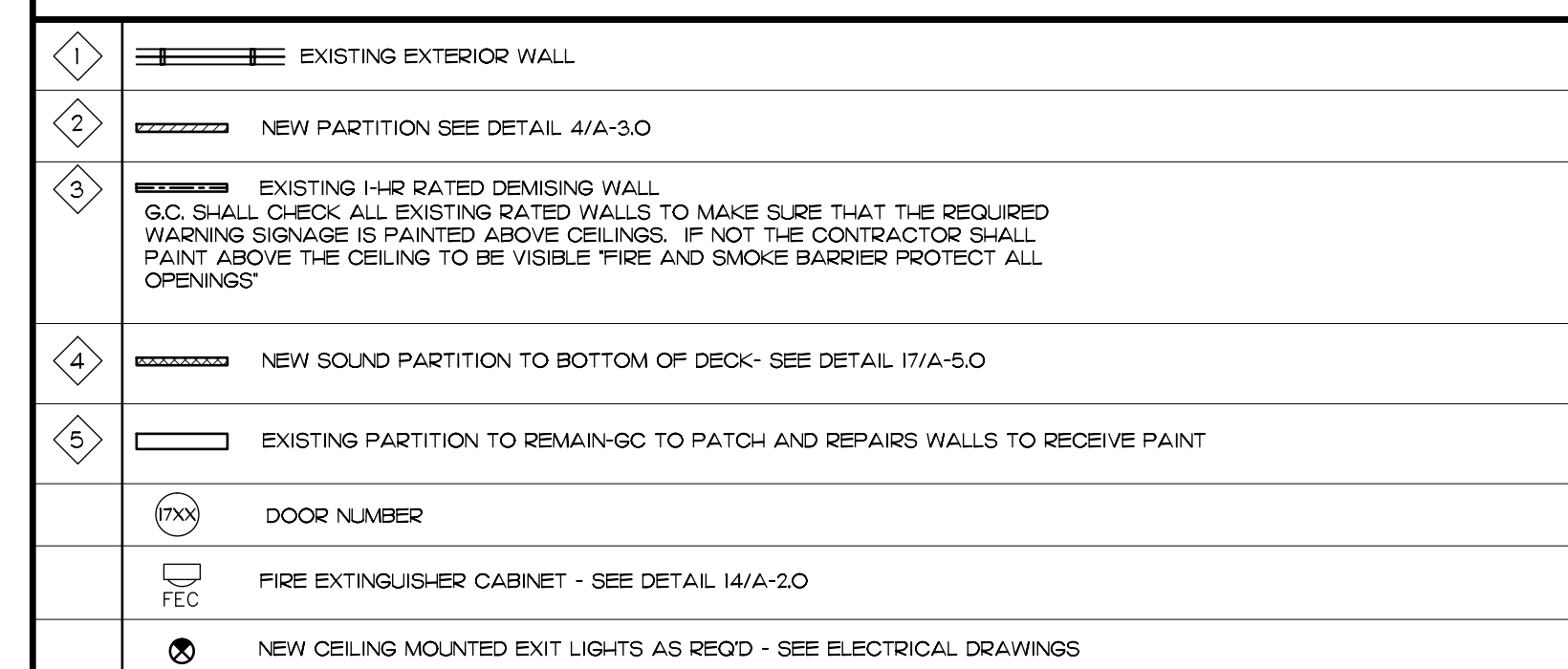
DOOR TYPES



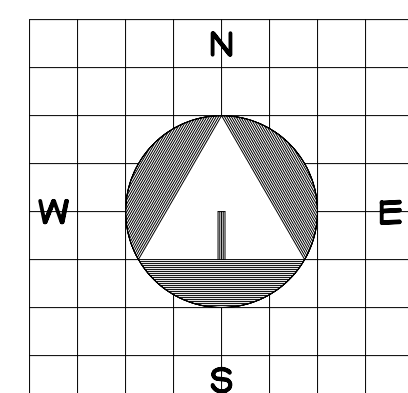
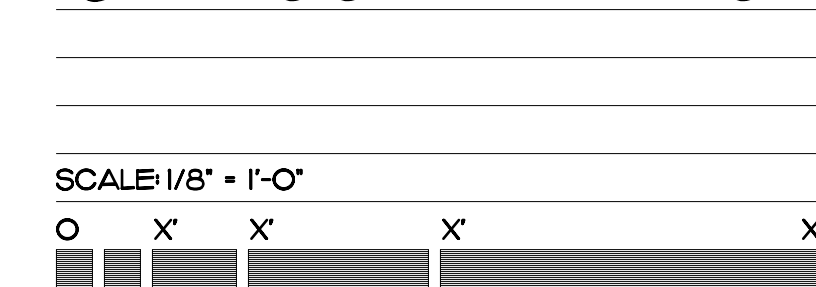
REFLECTED CEILING LEGEND



WALL LEGEND



FLOOR & REF. CLG. PLAN
1ST FLOOR - PAVILION



TENANT IMPROVEMENTS FOR:
NORTHBRIDGE CENTER GYM FACILITY

515 N. FLAGLER DR., SUITE P-100
WPB, FLORIDA

GLIDDEN • SPINA & PARTNERS
ARCHITECTURE • INTERIOR DESIGN, INC.

PHONE : 561.684.6844 • FAX: 561.684.5594 • E-MAIL : info@gsp-architects.com
1401 FORUM WAY, SUITE 100 • WEST PALM BEACH, FLORIDA 33401

COPYRIGHT 2009
THESE DRAWINGS ARE FOR THE
EXCLUSIVE USE OF GLIDDEN SPINA
& PARTNERS, INC. AND MAY NOT BE
DUPLICATED, REPRODUCED OR USED
IN ANY MANNER WITHOUT THE
EXPRESS WRITTEN CONSENT OF
GLIDDEN SPINA & PARTNERS, INC.
ALL RIGHTS RESERVED.

sheet title: **1ST FLOOR - PAVILION**
file name: **NGY-FP-100.DWG**

project no: **11040** revisions:

project no: 11040

Project No: 11049
date: 02/14/12

drawn by: **BJ/JOE**

checked by: **KS**

A-1.0