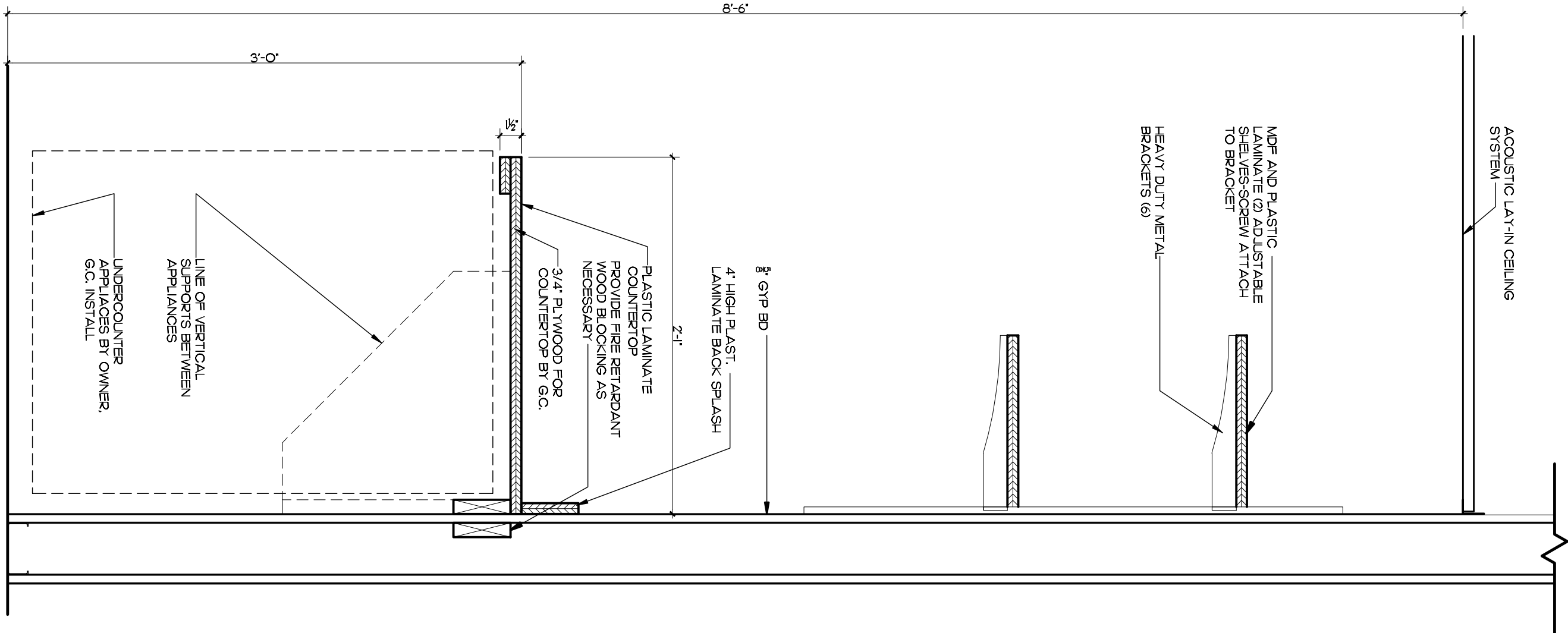
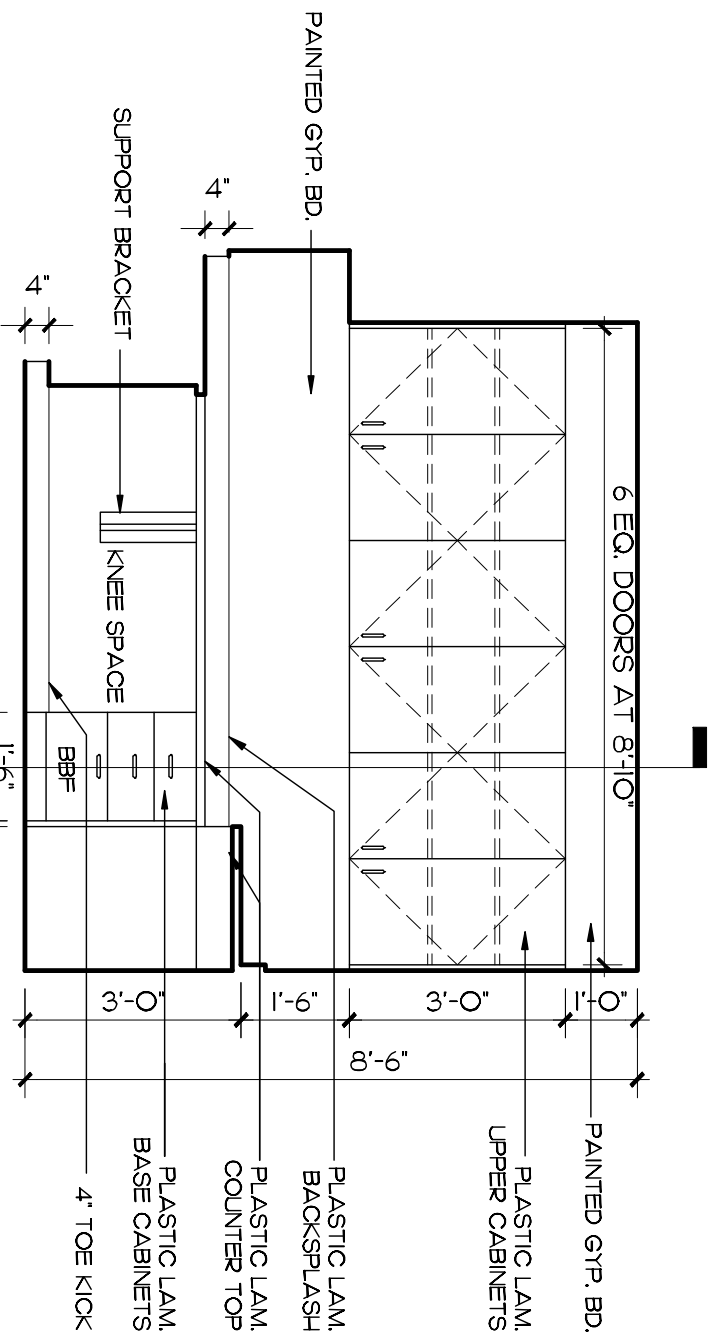


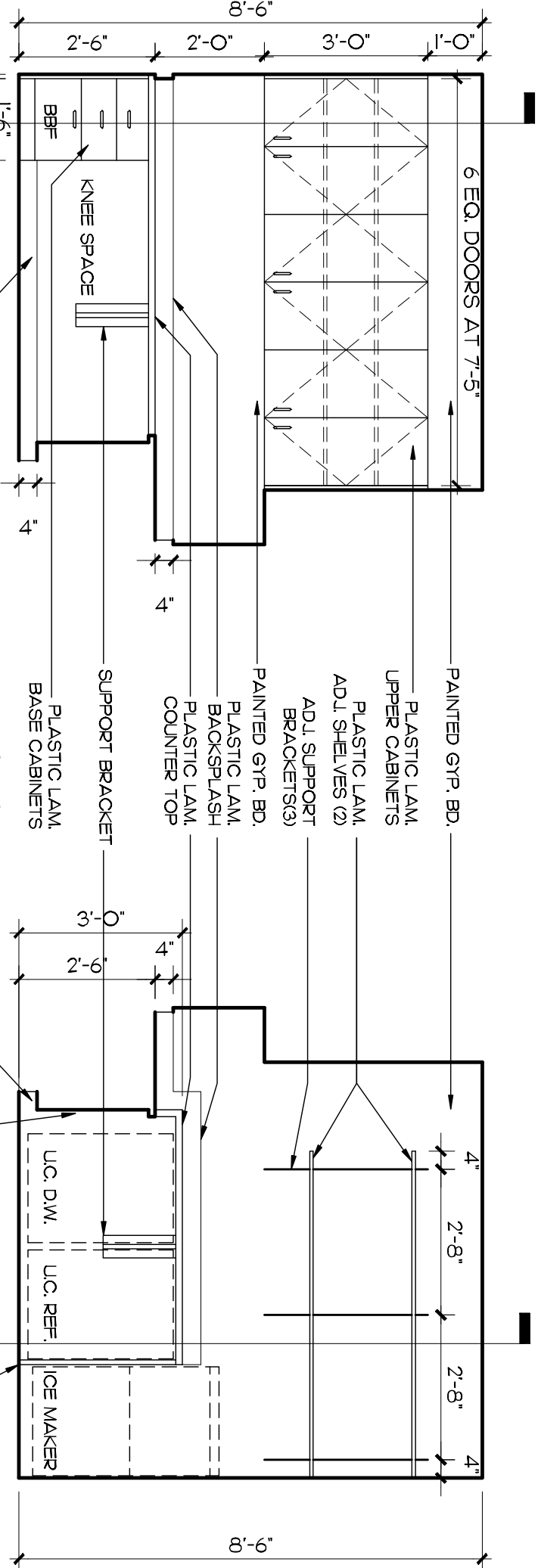
OFFICE
6 BUILT-IN DETAIL
SCALE 1/2"=1'-0"



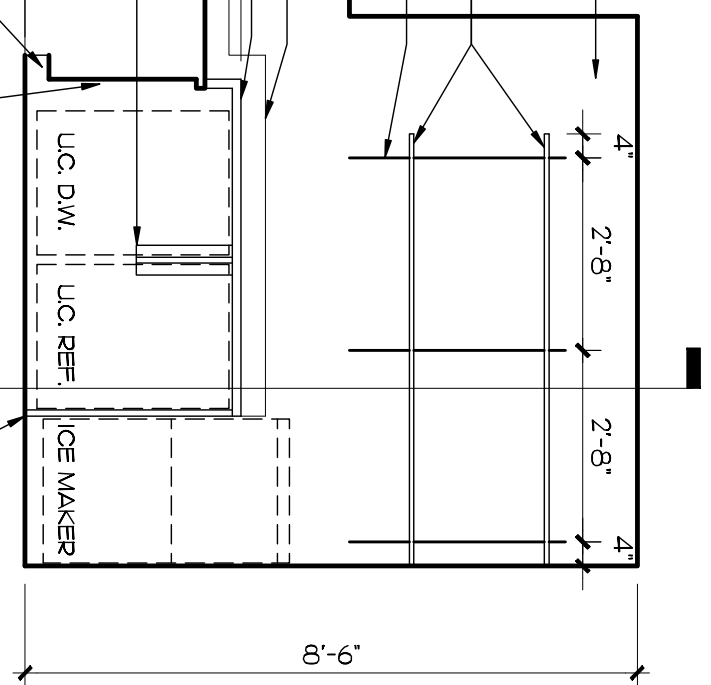
OFFICE
5 BUILT-IN DETAIL
SCALE 1/2"=1'-0"



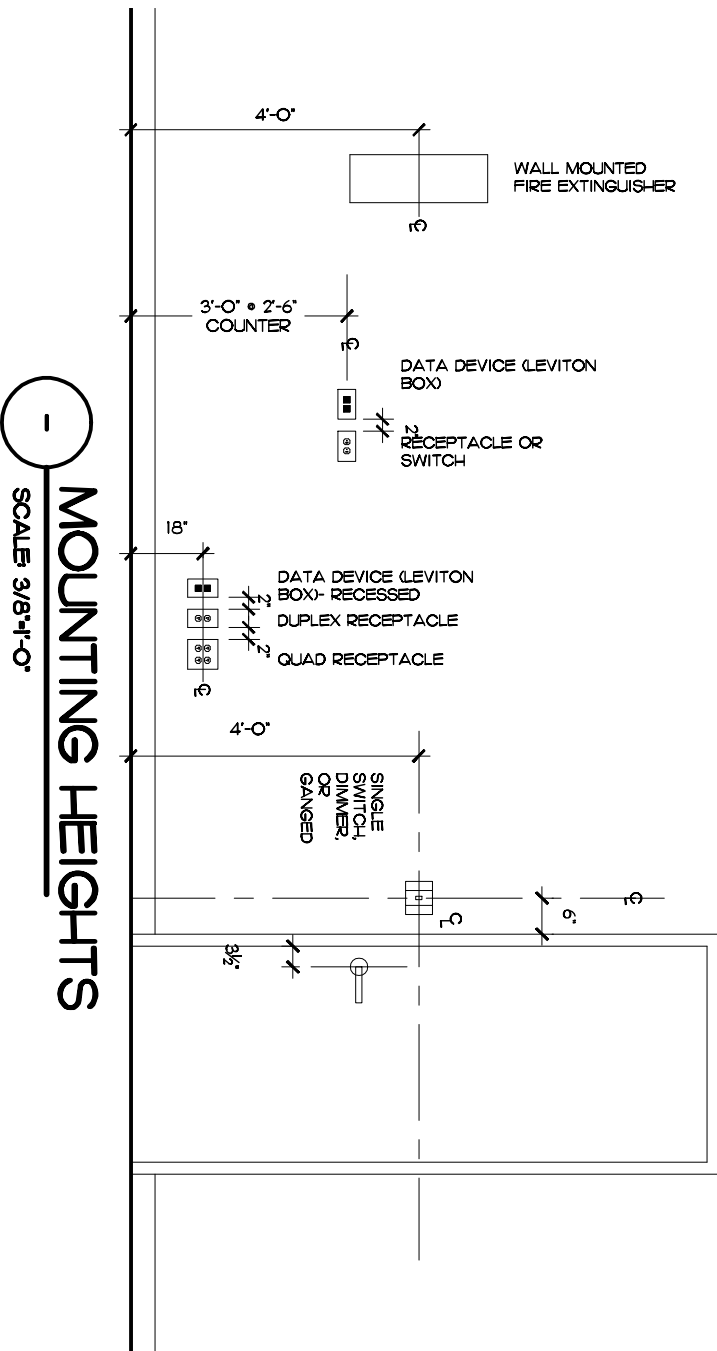
OFFICE
1 SCALE 3/8"=1'-0"



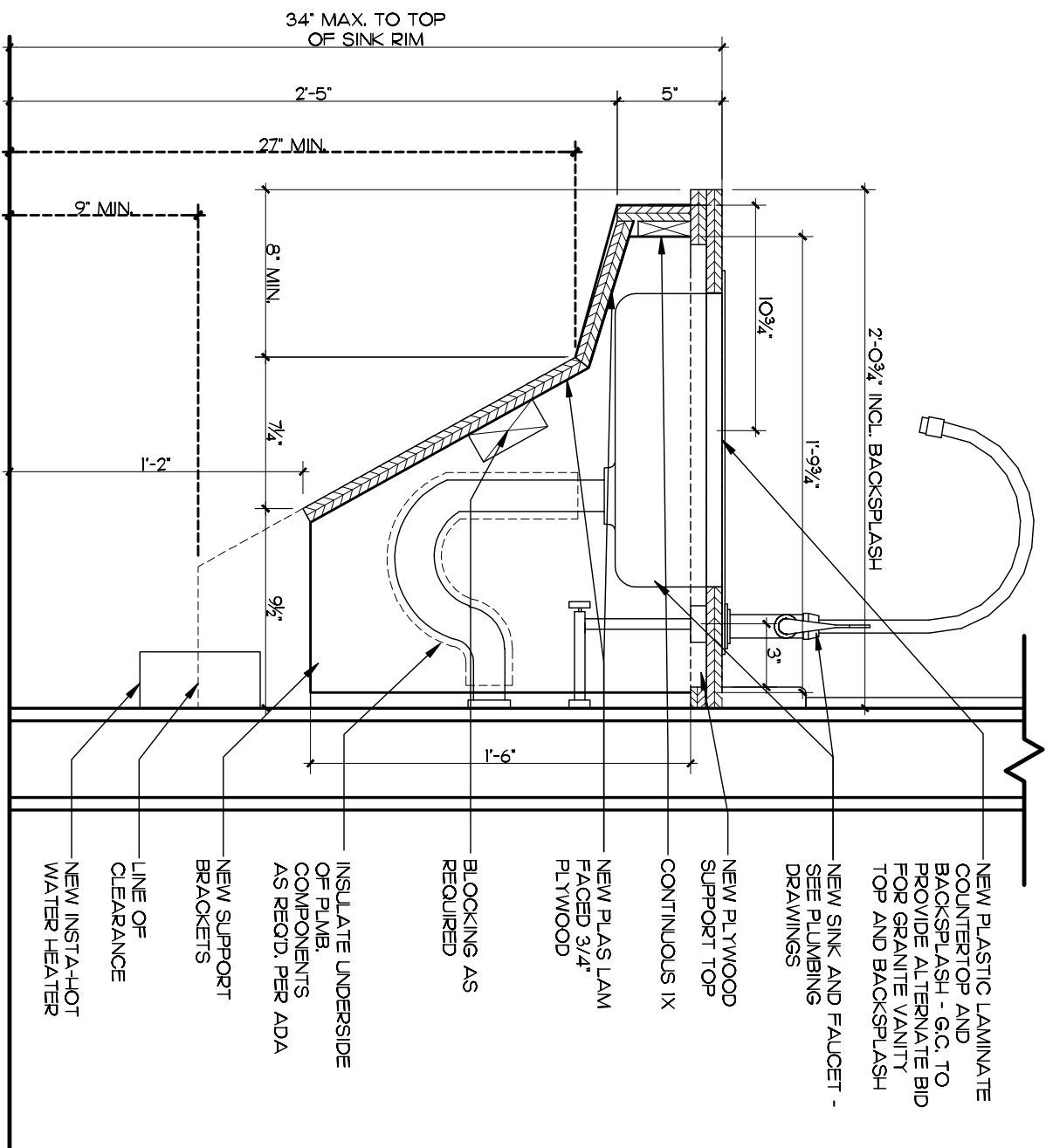
OFFICE
2 SCALE 3/8"=1'-0"



OFFICE
3 SCALE 3/8"=1'-0"



MOUNTING HEIGHTS
SCALE 3/8"=1'-0"



SEMINAR RM
4 BUILT-IN DETAIL
SCALE 1/2"=1'-0"

INTERIOR ELEVATIONS

sheet title: **INTERIOR ELEVATIONS**
file name: **101 CLEM.E.DWG**

project no: **09170**
date: **06/15/11**
drawn by: **BJG4**
checked by: **DB**

revisions:

CONTRACT: 2011
THESE DRAWINGS ARE FOR THE EXCLUSIVE USE OF GLIDDEN • SPINA & PARTNERS ARCHITECTURE • INTERIOR DESIGN, INC. NO OTHER REPRODUCTION OR USE IS PERMITTED WITHOUT THE EXPRESS WRITTEN CONSENT OF GLIDDEN • SPINA & PARTNERS ARCHITECTURE, INC.

TENANT IMPROVEMENTS FOR:

SUITE 150
101 NORTH CLEMATIS STREET
WEST PALM BEACH, FLORIDA



GLIDDEN • SPINA & PARTNERS
ARCHITECTURE • INTERIOR DESIGN, INC.

PHONE : 561.684.6844 • FAX : 561.684.5594 • E-MAIL : info@gsp-architects.com
1401 FORUM WAY, SUITE 100 • WEST PALM BEACH, FLORIDA 33401
FL License: #AA26001602

Keith M. Spina #ARI3419

Benjamin John Glidden, III #AR6536

A-2.1