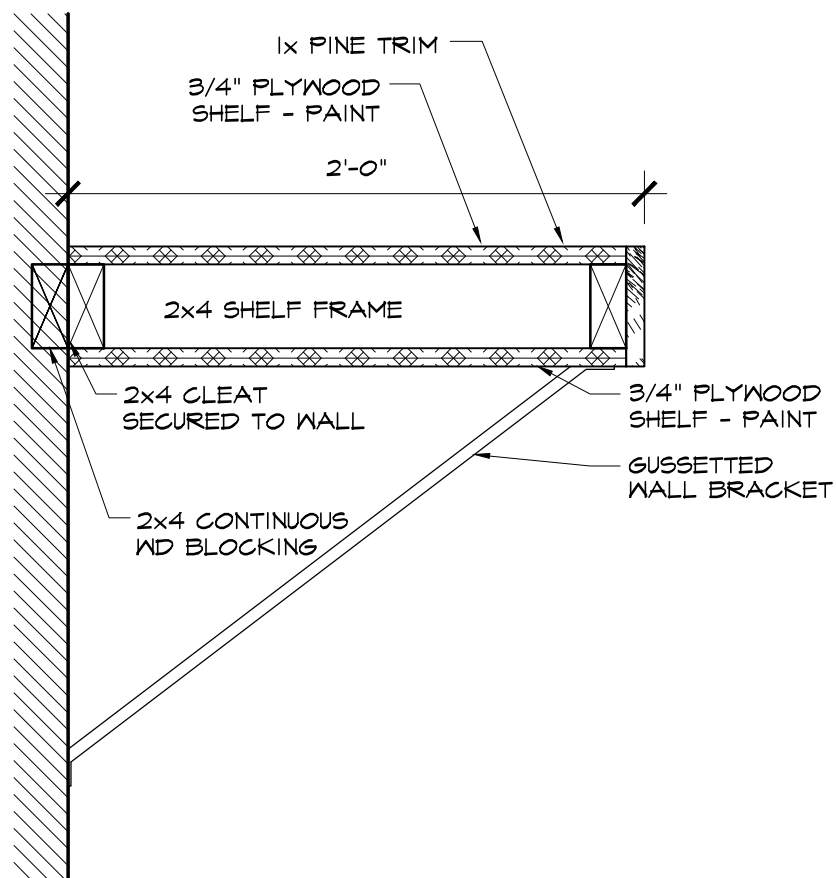
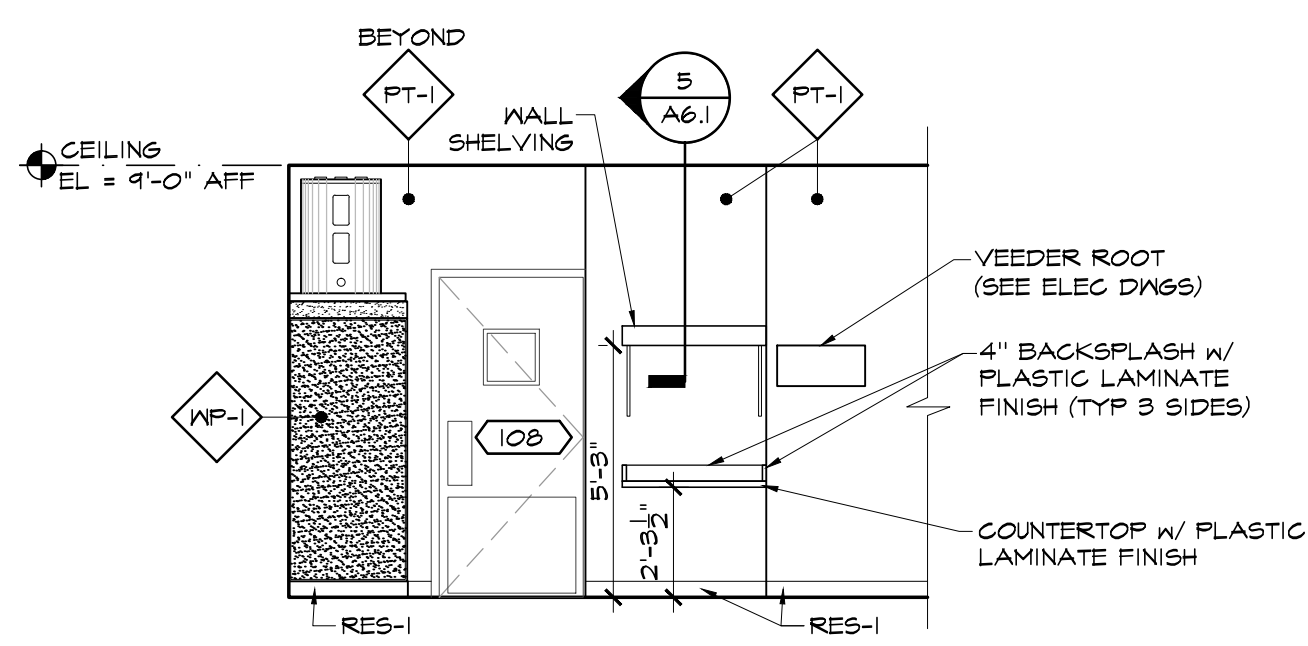


⑨ ACCESSORY SCHEDULE					
MARK	DESCRIPTION	MANUFACTURER	MODEL NUMBER	MT HEIGHT	REMARKS
1	COAT HOOK	SEE HOW SET P-2 ON SHEET (A2.1)		54" AFF	MTD ON DOOR
2	TOILET PAPER HOLDER	BOBRICK	B-685	21" & OF UNIT	
3	PAPER TOWEL DISPENSER	KIMBERLY CLARKE	04703	42" BOT OF UNIT	
4	SOAP DISPENSER	BOBRICK	B-155	38" BOT OF UNIT	
5	ELECTRIC HAND DRYER	EXCEL DRYER	XLERATOR XL-	42" BOT OF UNIT	COLOR AS SELECTED BY OWNER
6	MIRROR (36"x36")	N/A	N/A	40" BOT OF UNIT	STD 1/4" MIRROR
7	MOP HOLDER	BOBRICK	B-223 x 24"	48" AFF	
8	SOAP DISPENSER	BOBRICK	B-211	38" BOT OF UNIT	
9	REAR GRAB BAR	BOBRICK	B-6806 x 36"	36" & OF UNIT	1 1/2" DIA - w/ PEENED GRIP
10	SIDE GRAB BAR	BOBRICK	B-6806 x 42"	36" & OF UNIT	1 1/2" DIA - w/ PEENED GRIP
11	TOILET PARTITION	MARLITE	HIGH DENSITY POLYMER (HDP)	PER MANUF RECOMMEND	#260 SANDSTONE
12	VERTICAL GRAB BAR	BOBRICK	B-6806 x 18"	34-41" & OF UNIT	1 1/2" DIA - w/ PEENED GRIP
13	BABY CHANGING STATION	KOALA KARE	KB-101-05	PER MFG INST.	PROVIDE BLOCKING PER MFG ROTS

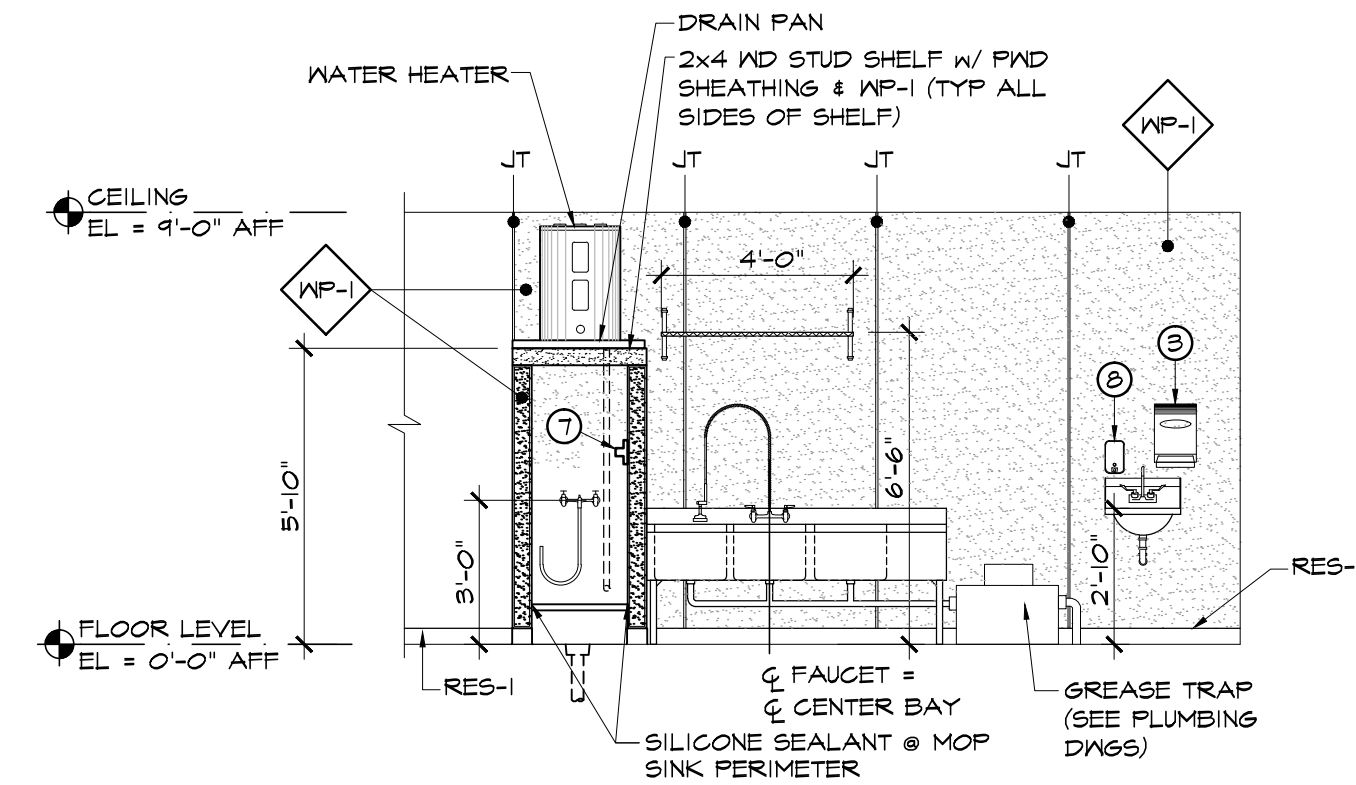
- NOTES
- 1) MOUNT ALL TOILET ACCESSORIES IN STRICT ACCORDANCE WITH THE AMERICAN DISABILITIES ACT OR GOVERNING HANDICAP CODE
- 2) PROVIDE FIRE TREATED WOOD BLOCKING BACK-UP FOR MOUNTING ALL ACCESSORIES



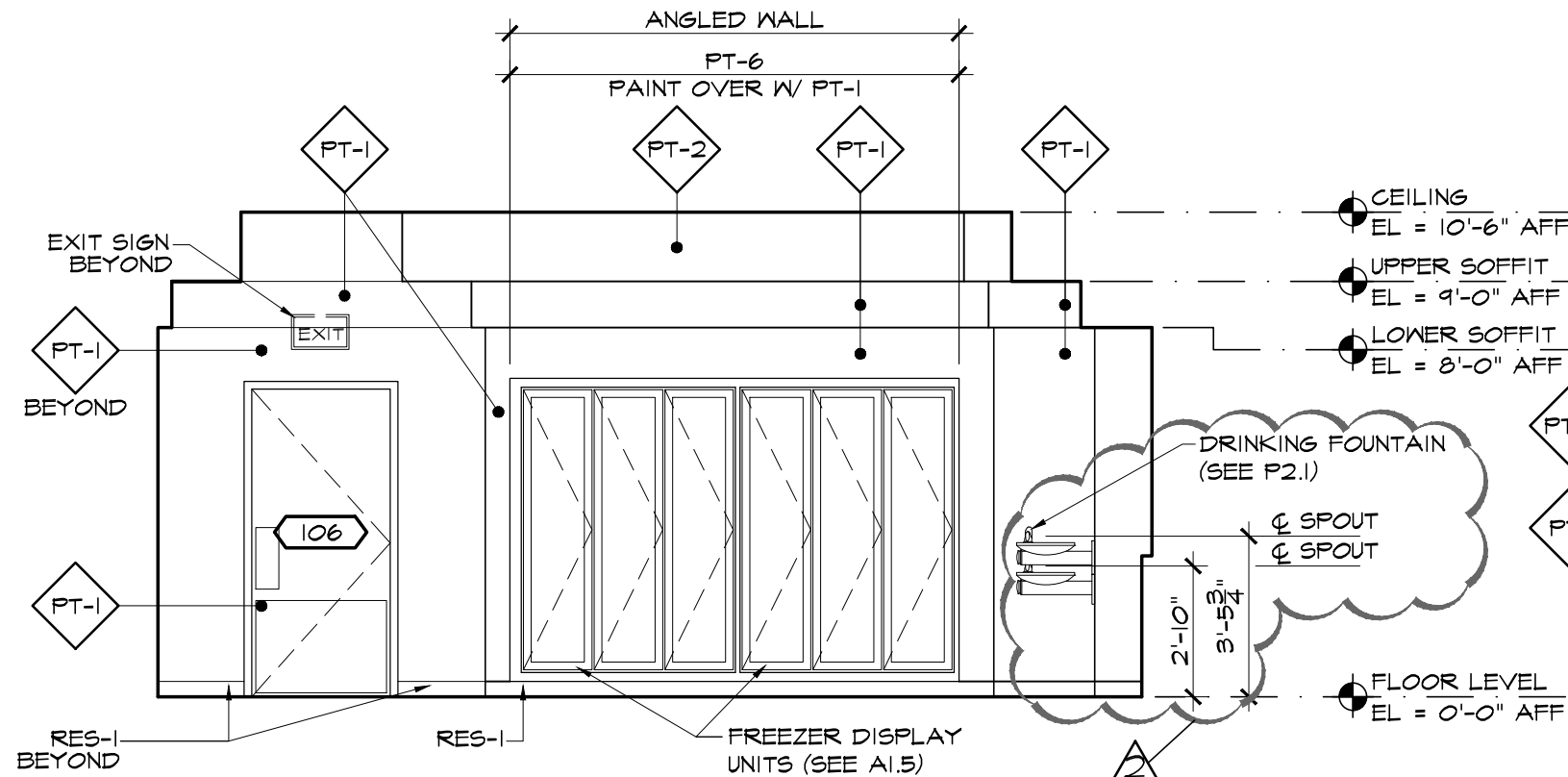
⑤ SHELF DETAIL
A6.1 SCALE: 1/2" = 1'-0"



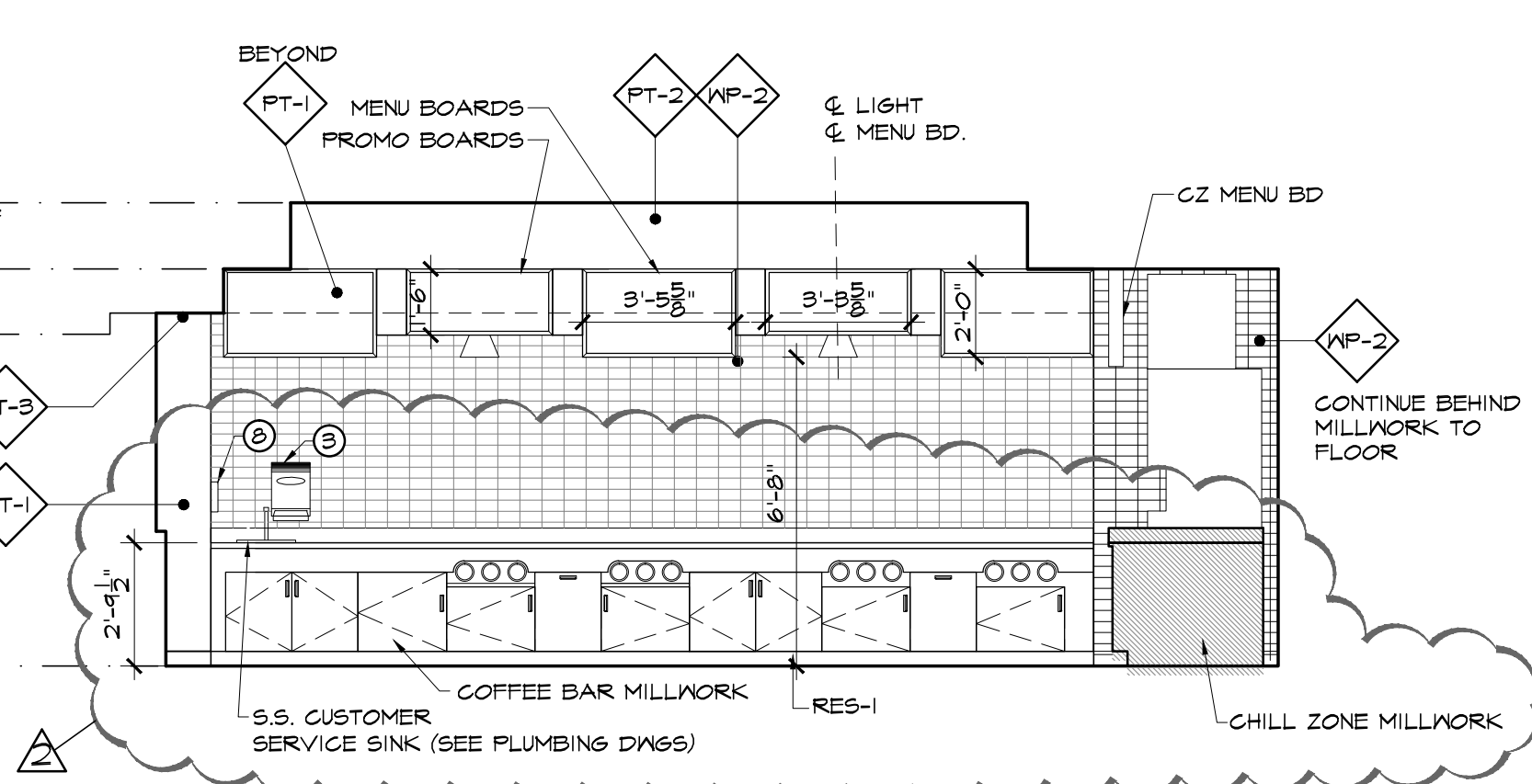
⑦ RECEIVING/UTIL ELEVATION
A1.1 SCALE: 1/4" = 1'-0"



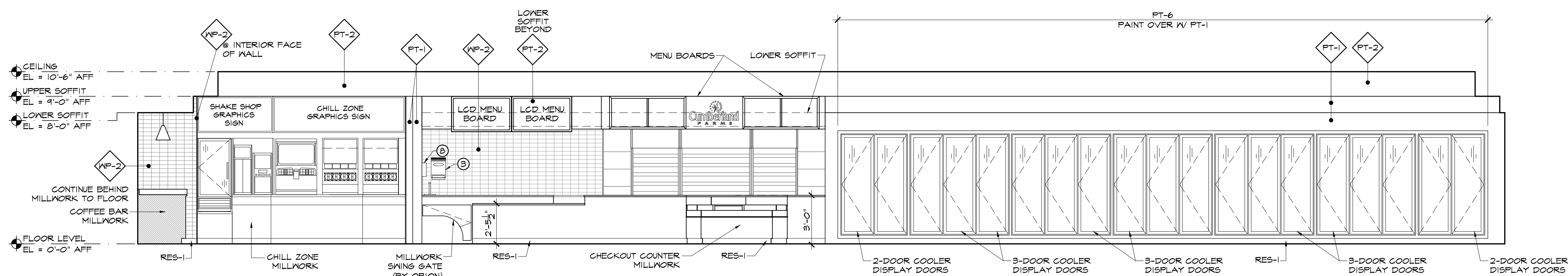
⑥ RECEIVING/UTIL ELEVATION
A1.1 SCALE: 1/4" = 1'-0"



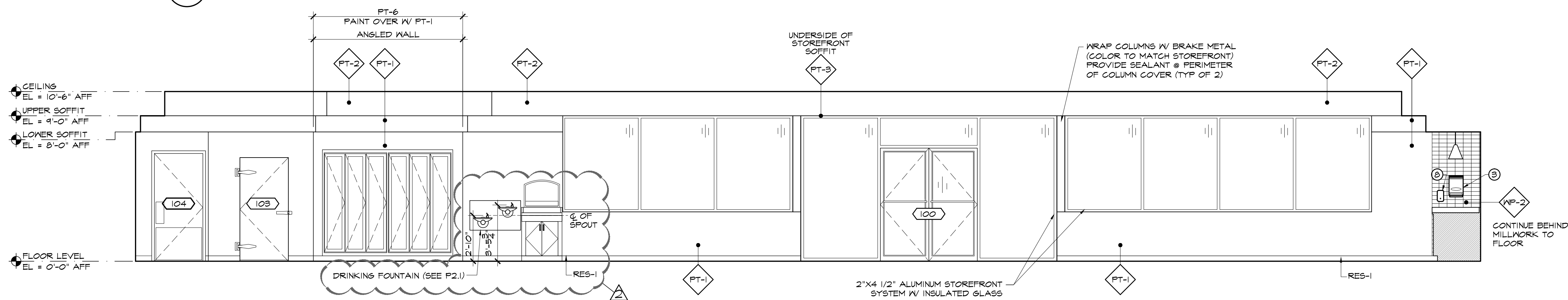
④ RETAIL AREA ELEVATION
A1.1 SCALE: 1/4" = 1'-0"



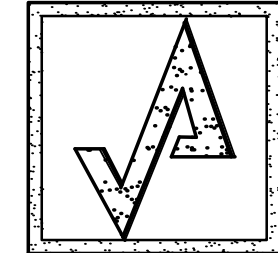
③ RETAIL AREA ELEVATION
A1.1 SCALE: 1/4" = 1'-0"



② RETAIL AREA ELEVATION
A1.1 SCALE: 1/4" = 1'-0"



① RETAIL AREA ELEVATION
A1.1 SCALE: 1/4" = 1'-0"



AHARONIAN
& ASSOCIATES INC.
ARCHITECTS

310 George Washington Highway
Suite 100
Smithfield, Rhode Island
0 2 9 1 7
T 401-232-5010
F 401-232-5080
WWW.ARCH-ENG.COM

DISCLAIMER

OWNERSHIP AND USE OF DOCUMENTS, DRAWINGS AND SPECIFICATIONS ARE INSTRUMENTS OF PROFESSIONAL SERVICE AND SHALL REMAIN THE PROPERTY OF THE ARCHITECT. THESE DOCUMENTS ARE NOT TO BE USED, IN WHOLE OR IN PART, FOR ANY OTHER PROJECTS OR PURPOSES OR BY ANY OTHER PARTIES THAN THOSE PROPERLY AUTHORIZED BY CONTRACT WITHOUT THE EXPRESS WRITTEN AUTHORIZATION OF THE ARCHITECT.

REVISIONS

NUMBER	REMARKS	DATE
1	BUILDING DEPARTMENT COMMENTS	12/7/12

FOR PERMIT ONLY

PROJECT TITLE



100 Crossing Blvd, Framingham, Massachusetts

STORE #
V0636

22905 S.R. 7

BOCA RATON, FL
Palm Beach County

DRAWING TITLE

INTERIOR
ELEVATIONS

DATE AUG 29, 2012	PROJ NO 11117
DRAWN BY MD	CHECKED BY AZ

DRAWING NUMBER

A6.1