

- * ALL CLOSERS TO BE ON THE INSIDE OF TENANT SPACE
- * ALL DOOR STOPS ARE TO BE FLOOR MOUNTED (NOT WALL MOUNTED)
- * DOOR HARDWARE IS REQUIRED TO COMPLY WITH FBC 11-4.13.9 FOR ACCESSIBILITY
- * CONTRACTOR TO SEE BUILDING ENGINEER FOR STANDARD SPECS
- * ALL METAL FRAMES TO BE PAINTED (COLOR T.B.D. BY TENANT)
- * ALL WOOD DOORS TO BE STAINED (STAIN T.B.D. BY TENANT)

DOOR SCHEDULE

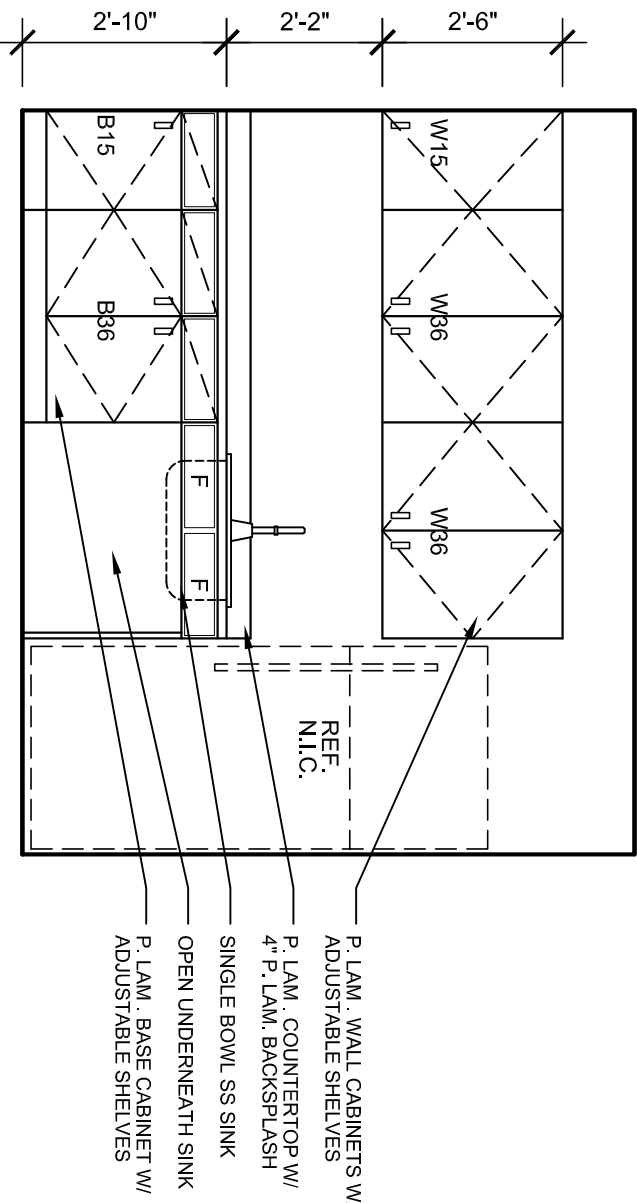
MARK	LABEL	DOOR				FRAME	REMARKS
		MAT	TYPE	SIZE		SIZE/MAT.	
A		WD	FLUSH	30"	8 1/2"	1,344"	2" HAM REUSE CONE DOORS
B		WD	FLUSH	30"	8 1/2"	1,344"	2" HAM REUSE ON LATCH
C		WD	FLUSH	30"	8 1/2"	1,344"	2" HAM NEW DOORS

1 PARTITION TYPE (1HR)

3/4\"/>

2 DOORS

1/4\"/>



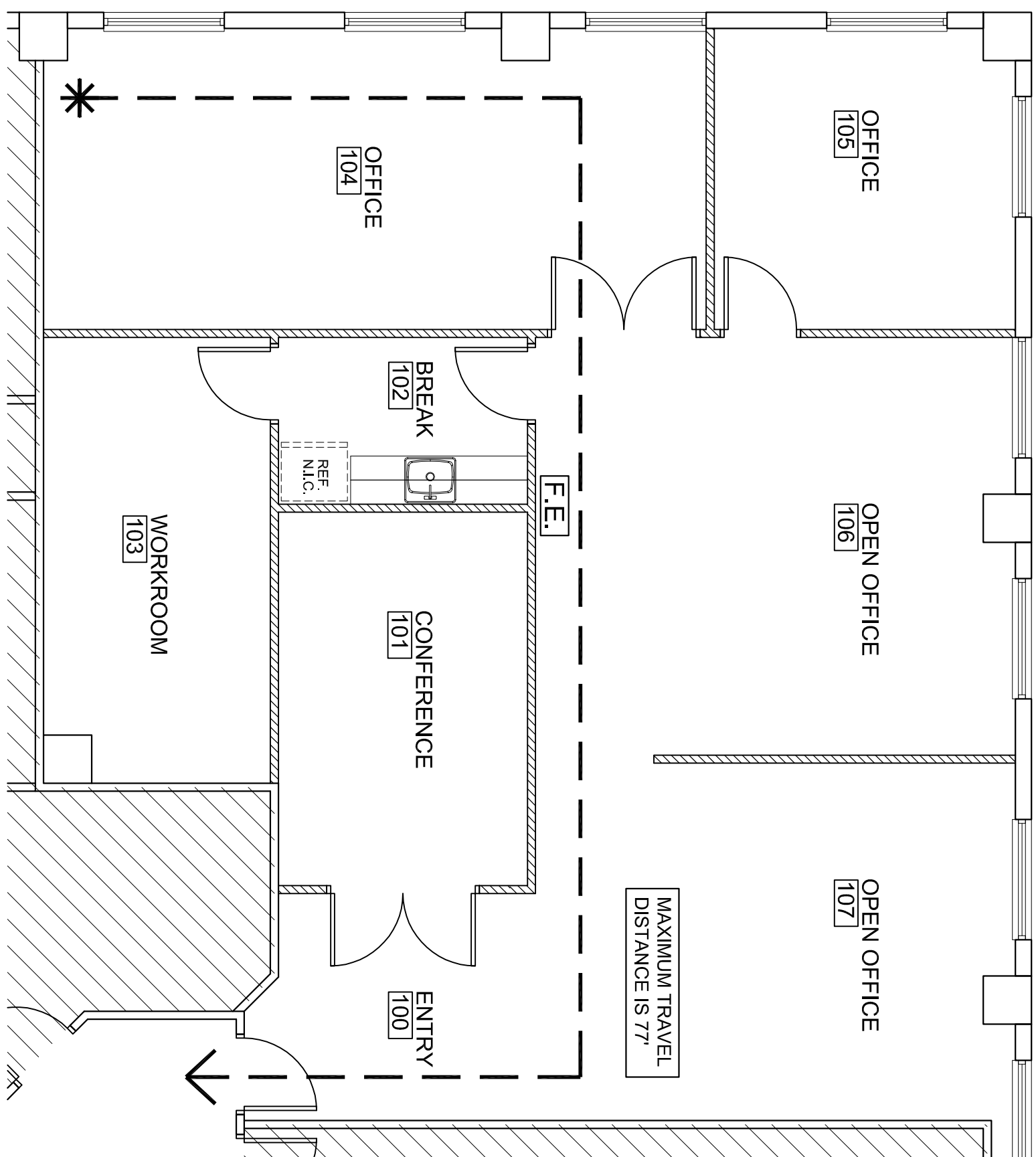
- * SINKS SHALL BE MOUNTED WITH THE COUNTER OR BIRM NO HIGHER THAN 34\"/>

3 BREAK #102

3/8\"/>

WALL LEGEND
===== EXIST. PARTITION
===== NEW WALL STUD PARTITION

F.E. INDICATES NEW 10 LB. ABC TYPE FIRE EXTINGUISHER WITH HANGER BRACKET



LIFE SAFETY SUMMARY (SUITE #205)

ITEM	REQUIRED	PROVIDED	CODE
EXIT ACCESS DOORWAY	1	1	REG. TABLE 10.5.1
TRAVEL DISTANCE	300'	77'	REG. TABLE 10.6.1
COMMON PATH OF TRAVEL	100'	77'	REG. 10.14.3(1)
DEAD END CORRIDOR	50'	-	REG. 10.17.2(2)
BUSINESS GROUP "B" OCCUPANCY	1,717 SQUARE FEET @ 1100 = 17 OCCUPANTS		REG. TABLE 1004.1.1

- * ALL FURNITURE TO BE PROVIDED BY TENANT
- 1. ALL 1 HR RATED FIRE PARTITIONS TO HAVE THE WOODS FIRE AND SMOKE BARRIER - PROTECT ALL OPENINGS - LEAST 4 INCHES IN HEIGHT - IDENTIFICATION SHALL BE SPACED NOT MORE THAN 15" ON CENTER
- 2. PENETRATIONS THROUGH A FIRE-RATED WALL ASSEMBLY SHALL BE PROTECTED BY A FIRE-STOP SYSTEM OR DEVICE
- 3. PROVIDE MOBILE SIGNAGE AT REQUIRED EXIT DOORS WITH EXIT SIGNS
- 4. SEE ELECTRICAL SHEETS FOR LIFE SAFETY DEVICES/EMERGENCY LIGHT LOCATIONS

MK	ROOM NAME	FLOOR	BASE	WALLS	CEILING		REMARKS
		MAT	MAT HT	MAT	MAT	FIN HT	

SUITE #205							
100	ENTRY	CPT	VL	4"	GWB	PT1	ACT1
101	CONFERENCE	CPT	VL	4"	GWB	PT1	ACT1
102	BREAK	VCT	VL	4"	GWB	PT1	ACT1
103	WORKROOM	CPT	VL	4"	GWB	PT1	ACT1
104	OFFICE	CPT	VL	4"	GWB	PT1	ACT1
105	OFFICE	CPT	VL	4"	GWB	PT1	ACT1
106	OFFICE	CPT	VL	4"	GWB	PT1	ACT1
107	OPEN OFFICE	CPT	VL	4"	GWB	PT1	ACT1

- * ALL INTERIOR WALL AND CEILING FINISHES TO HAVE A MIN CLASS "C" FLAME SPREAD CLASSIFICATION
- * ALL INTERIOR FLOOR FINISH SHALL BE NOT LESS THAN CLASS II
- * SAMPLES FOR ALL FINISHES ARE REQUIRED TO BE APPROVED BY TENANT PRIOR TO ORDERING

SUITE #205 FINISH SELECTIONS:

CARPET (CPT)	ACOUSTICAL CEILING TILE (ACT1)
MANUFACTURER: BIRSE/OW	MANUFACTURER: ARMSTRONG
COLLECTION: CLEVER SPIN	COLLECTION: CORTESA REVELED REGULAR
COLOR: #7859 FANTASTIC TURN	COLOR: WHITE #258
VINYL COMPOSITION TILE (VCT)	GWB: 3/8" WHITE PAVE LINE
MANUFACTURER: ARMSTRONG	PLASTIC LAMINATE (P-LAM 1)
COLLECTION: STANDARD EXCELON	MANUFACTURER: FORMICA
COLOR: WASHED LINEN #5180	COLLECTION: CORTESA REVELED REGULAR
VINYL BASE (VL)	PLASTIC LAMINATE (P-LAM 2)
MANUFACTURER: ARMSTRONG	MANUFACTURER: FORMICA
COLLECTION: CORTESA REVELED REGULAR	COLLECTION: CORTESA REVELED REGULAR
COLOR: ELEGANCE #2	LOCATION: HORIZONTAL SURFACES
PAINT (PT1)	INTERIOR DOOR FINISH
MANUFACTURER: SHERWIN WILLIAMS	MANUFACTURER: SHERWIN WILLIAMS
COLOR: SWATCH COTTON WHITE	COLOR: SWATCH COTTON WHITE
SHEEN: FLAT ON WALLS / SATIN ON METAL	STAIN DOORS TO MATCH EXISTING DOOR F.C. CONFERENCE
	ROOM DOORS THAT ARE BEING RELOCATED

5 FINISHES

Bd

birse design inc.
5300 woodland lakes drive
palm beach gardens, fl 33418
phone 561-249-4001
fax 772-409-8684
AA26001615

ALLEN'S BIRSE
A0624719

COURT CASUAL
FOUNTAIN SQUARE
2600 N MILITARY TRAIL #205
BOCA RATON, FL
PROJECT NUMBER 260015

1	REVISIONS
2	
3	
4	
5	

DRAWN BY ASB
CD
02/04/13

A-2