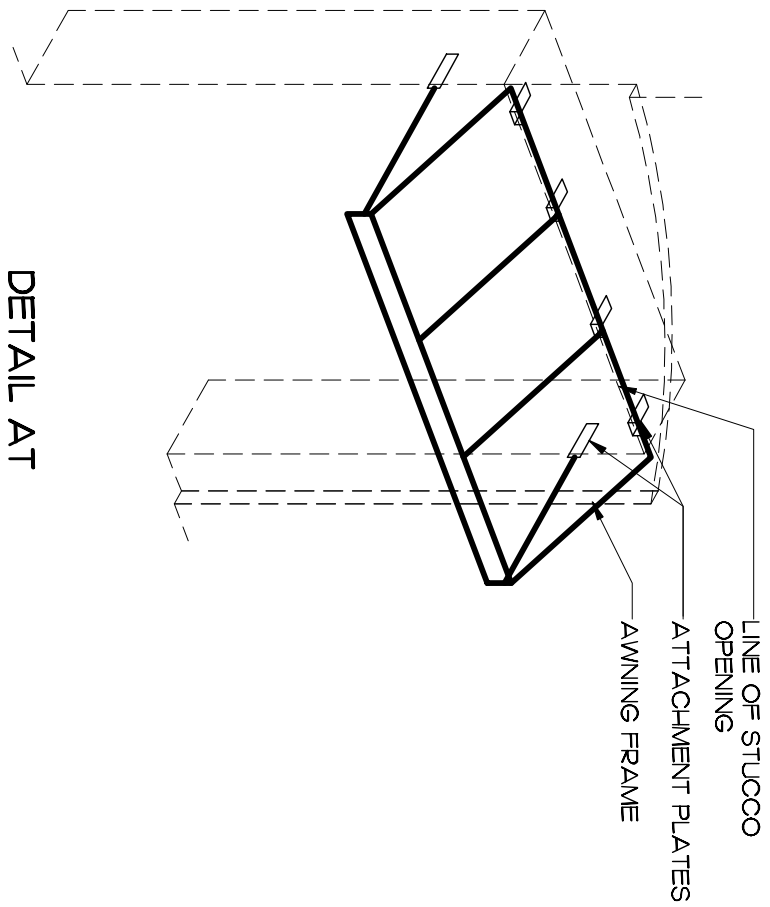
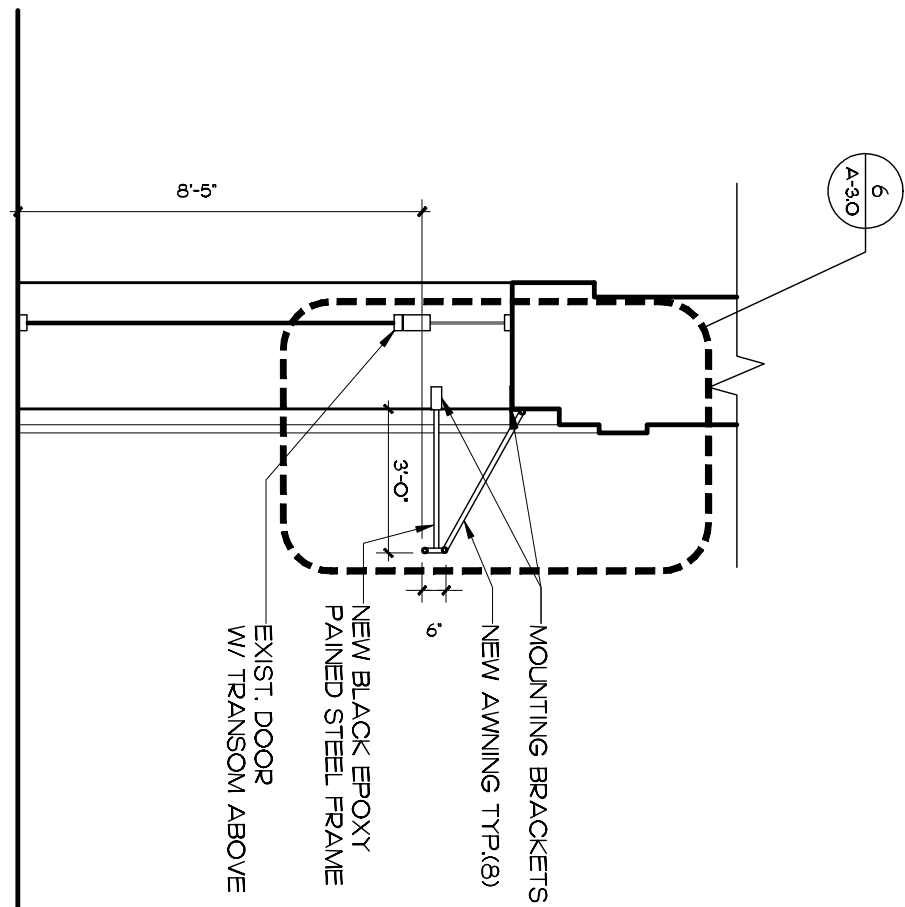


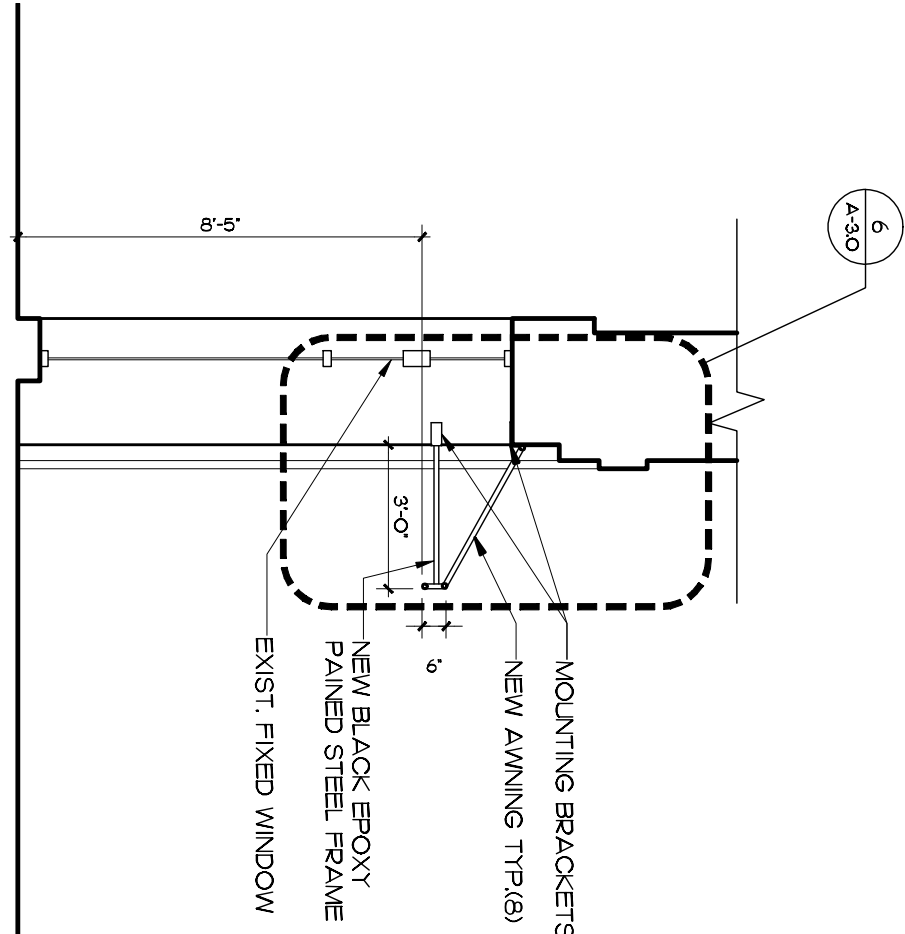
DETAIL AT  
**7**  
**AWNING FRAME**  
SCALE NTS



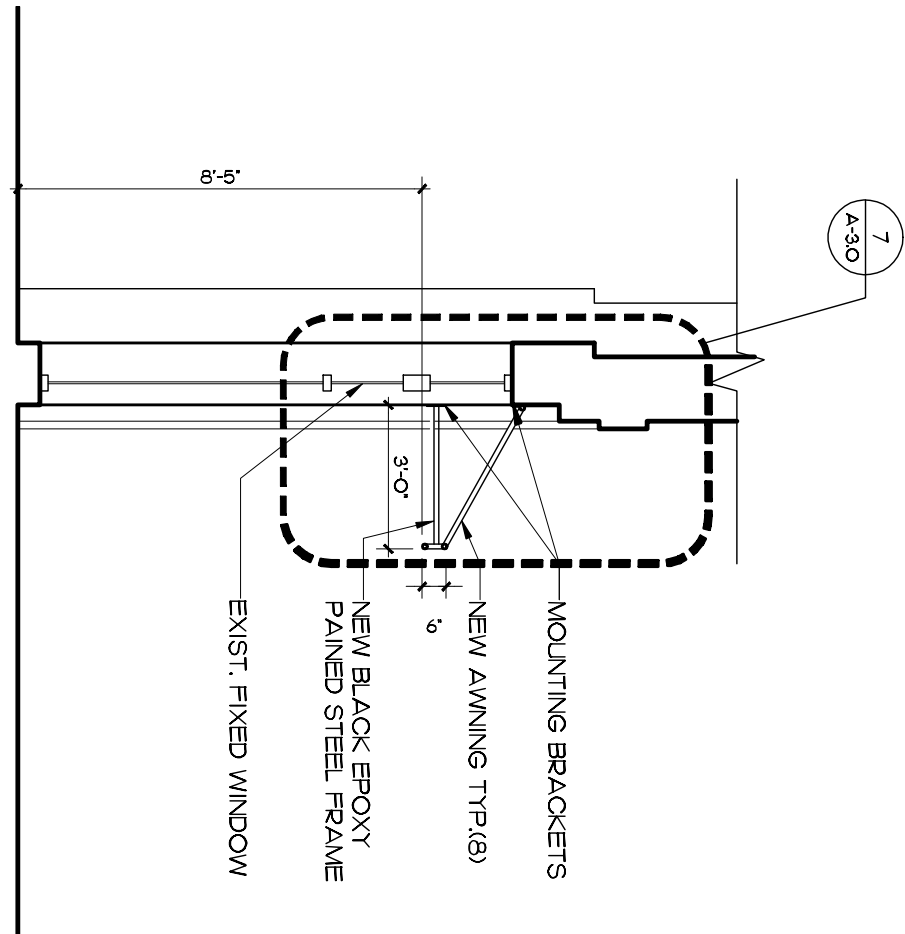
DETAIL AT  
**6**  
**AWNING FRAME**  
SCALE NTS



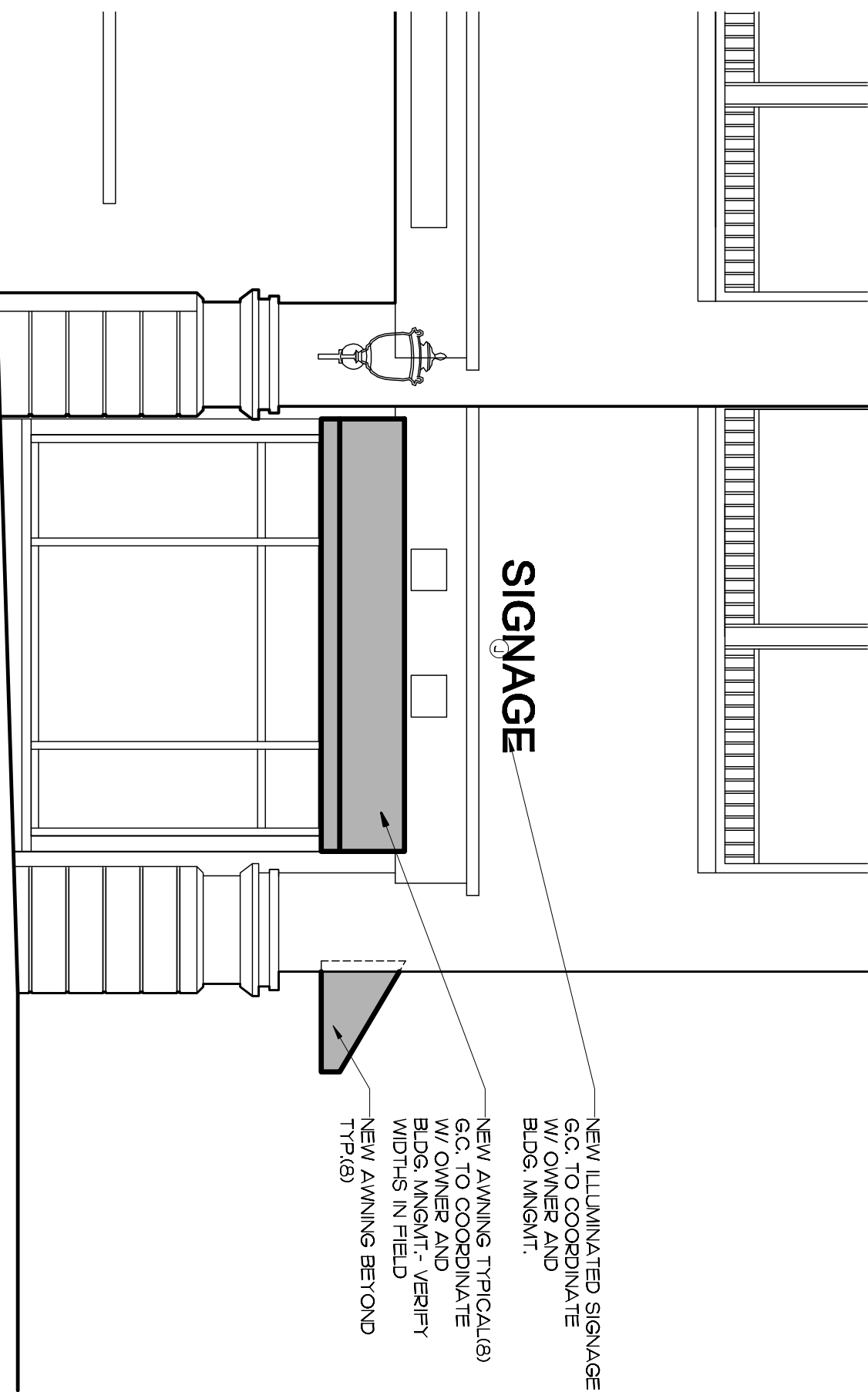
SECTION AT  
**5**  
**EXTERIOR WALL**  
SCALE 1/4"=1'-0"



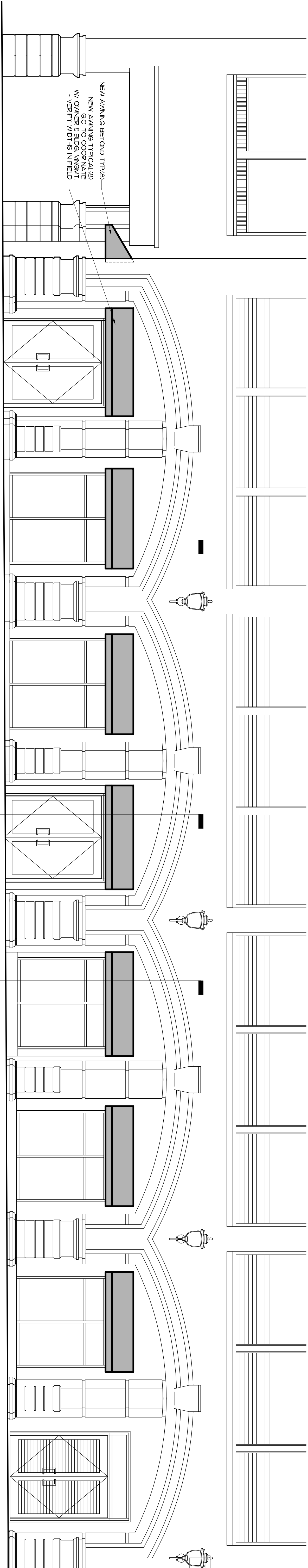
SECTION AT  
**4**  
**EXTERIOR WALL**  
SCALE 1/4"=1'-0"



SECTION AT  
**3**  
**EXTERIOR WALL**  
SCALE 1/4"=1'-0"



**2**  
**NORTH ELEVATION**  
SCALE 1/4"=1'-0"



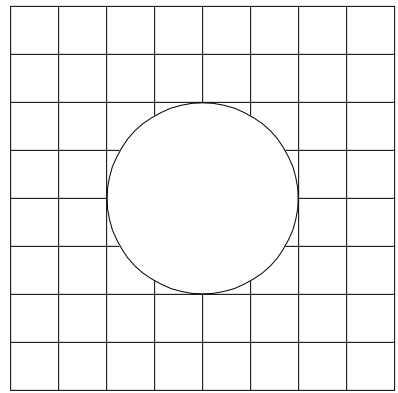
**1**  
**EAST ELEVATION**  
SCALE 1/4"=1'-0"

**NOTE:**

SEALIT ENGINEERED SHOP DRAWING OF AWNING FRAMES AND METHOD OF ATTACHMENT FOR ARCHITECT, TENANT & BLDG. MNGMT. REVIEW PRIOR TO FABRICATION.

**EXTERIOR ELEVATIONS  
& AWNING DETAILS**

SCALE 3/8" = 1'-0"



**TENANT IMPROVEMENTS FOR:**

SUITE 150  
101 NORTH CLEMATIS STREET  
WEST PALM BEACH, FLORIDA



**GLIDDEN • SPINA & PARTNERS**  
ARCHITECTURE • INTERIOR DESIGN, INC.

PHONE : 561.684.6844 • FAX : 561.684.5594 • E-MAIL : info@gsp-architects.com  
1401 FORUM WAY, SUITE 100 • WEST PALM BEACH, FLORIDA 33401

FL License: #AA26001602

Keith M. Spina #AR13419

Benjamin John Glidden, III #AR6536

sheet title: **& AWNING DETAILS**  
file name: **101 CLEM-IE.DWG**

project no: **09170**  
date: **06/15/11**  
drawn by: **BJG4**  
checked by: **DB**

revisions:

COPYRIGHT © 2011  
THESE DRAWINGS ARE FOR THE USE OF THE  
OWNER AND ARCHITECT ONLY. NO PARTS  
HEREOF SHALL BE REPRODUCED OR  
TRANSMITTED IN ANY MANNER WITHOUT THE  
WRITTEN PERMISSION OF GLIDDEN SPINA & PARTNERS, INC.  
ALL RIGHTS RESERVED.

**A-3.0**