

LIGHTING NOTES

1. REFER TO DRAWING E0.01 FOR GENERAL NOTES AND LEGEND.
2. REFER TO ARCHITECTURAL REFLECTED CEILING PLAN FOR EXACT PLACEMENT OF FIXTURES.
3. REFER TO BUILDING ELEVATIONS FOR EXACT LOCATION OF WALL MOUNTED FIXTURES.
4. ALL EXTERIOR LIGHTING CONTROLLED VIA THE TIMECLOCK CONTROLLER AND MANUAL OVER-RIDE SWITCH.
5. CONNECT EMERGENCY BALLAST TO THE UN-SWITCHED LEG OF CIRCUIT INDICATED.
6. CONNECT EXIT SIGN TO THE UN-SWITCHED LEG OF CIRCUIT INDICATED.
7. ALL OVERHEAD WIRING SHALL BE IN RIGID CONDUIT WITH JUNCTION BOXES. WIRE WHIPS IN EMT SHALL BE PERMITTED.
8. SEAL LIGHTING FIXTURE AT CEILING TO MAINTAIN COOLER/FREEZER TEMPERATURE.

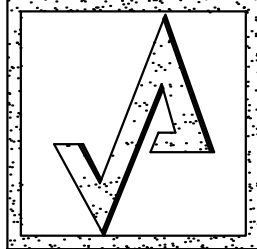
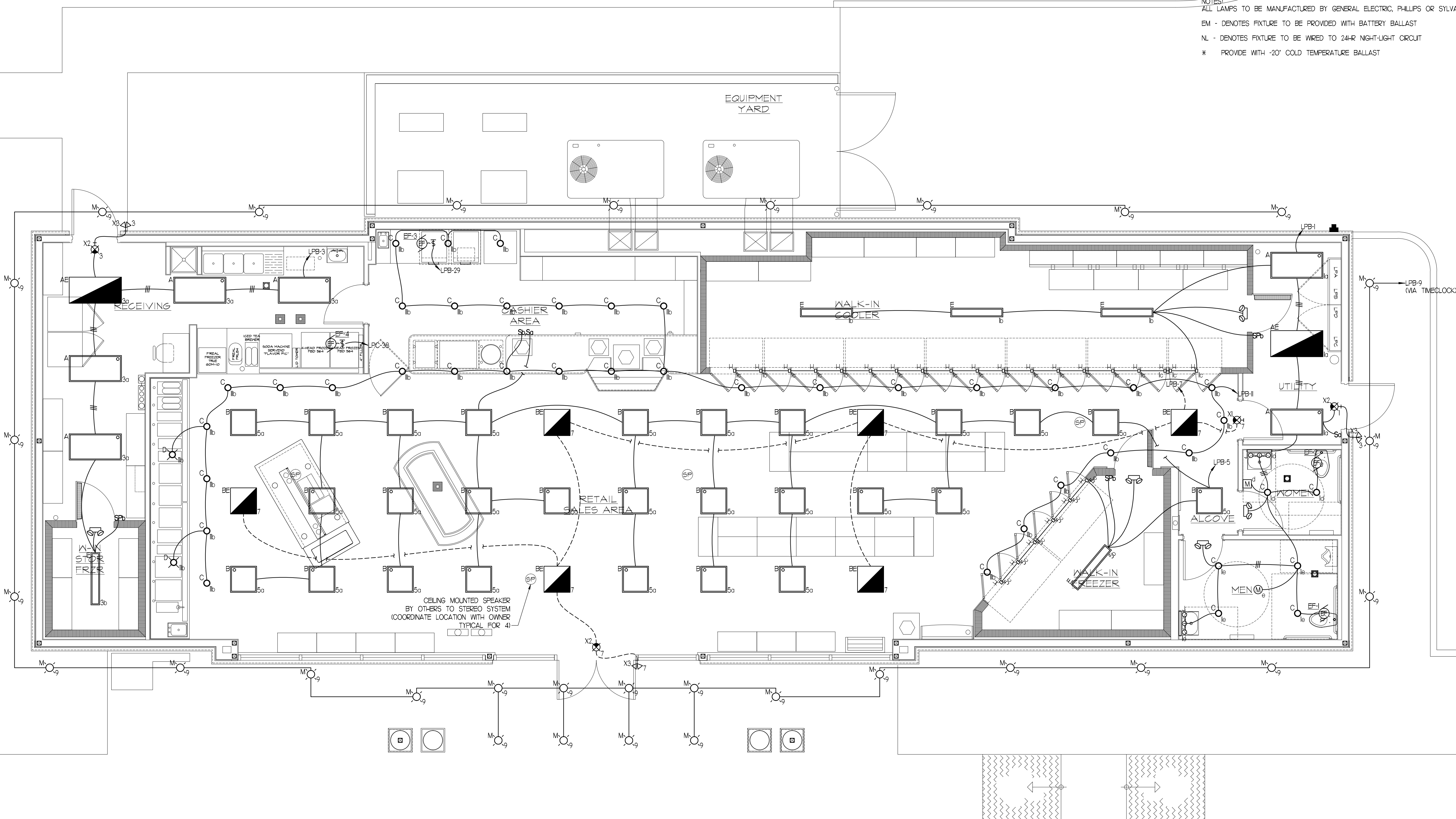
LIGHTING FIXTURE SCHEDULE

ALL FLUORESCENT BALLAST'S SHALL BE OF THE ELECTRONIC, UNIVERSAL TYPE, MANUFACTURED BY ADVANCE OR EQUAL.

QTY	DESIG	MANUFACTURER	CATALOG NUMBER	MTG	VOLT	LAMP		REMARKS
						QTY	DESCRIPTION	
6	A	LIGHTOLIER	GOS2G232UNVCA-85VI	R	120	2	32W T8 / 3500K	2'x4" TROFFER
2	AE	LIGHTOLIER	GOS2G2322OCA-85VHEM	R	120	2	32W T8 / 3500K	2'x4" TROFFER W/ BATTERY BALLAST
27	B	LIGHTOLIER	GOS2G232UNVCA-85Q	R	120	2	17W T8 / 3500K	2'x2" PARABOLIC
6	BE	LIGHTOLIER	GOS2G2322OCA-85Q-EM	R	120	2	17W T8 / 3500K	2'x2" PARABOLIC W/ BATTERY BALLAST
40	C	SPECTRUM	SP5-H18-EX / 5620-WS-GL	R	120	1	18W TT CFL / 3500K	DOWNLIGHT
2	D	ACCESS LIGHTING	28025-R	P	120	1	100W AIR	PENDANT DOWNLIGHT WITH PLASTIC SHIELD
5	E	LIGHTOLIER	STAW254UNVPS	S	120	2	54W T5-HO / 3500K	COOLER & FREEZER
24	H	ANTHONY INTERNATIONAL	OPTIMAX2-72	S	120	-	LED.	COOLER & FREEZER DOORS
2	J	COOPER	BC17NVEB810	W	120	1	17W	BATHROOM VANITY FIXTURE
31	M	SPECTRUM	S6E6LEDFO-25W-35K-EH-A624QFD-MM-GL	R	120	1	25 WATT LED.	EXTERIOR DOWNLIGHT
1	X1	LIGHTOLIER	LT-N-U-R-W	U	120	-	LED.	SELF CONTAINED EXIT SIGN
3	X2	LIGHTOLIER	LT-N-U-R-W-DC12	U	120	-	LED.	SELF CONTAINED EXIT SIGN W/ REMOTE CAPACITY
3	X3	LIGHTOLIER	ELA-B-T-QWP-L0304	W	12	-	INCLUDED	REMOTE HEAD
5	ES	LITHONIA	ELM68 6VJBW	W	120	-	INCLUDED	EMERGENCY BATTERY UNIT

MOUNTING KEY:
P - PENDANT MOUNTED
R - RECESSED MOUNTED
S - SURFACE MOUNTED
W - WALL MOUNTED
U - UNIVERSAL MOUNTED

NOTES:
ALL LAMPS TO BE MANUFACTURED BY GENERAL ELECTRIC, PHILIPS OR SYLVANIA
EM - DENOTES FIXTURE TO BE PROVIDED WITH BATTERY BALLAST
NL - DENOTES FIXTURE TO BE WIRED TO 24-HR NIGHT-LIGHT CIRCUIT
* PROVIDE WITH -20° COLD TEMPERATURE BALLAST



AHARONIAN
& ASSOCIATES INC.
ARCHITECTS

310 George Washington Highway
Suite 100
Smithfield, Rhode Island
0 2 9 1 7

T 401-232-5010
F 401-232-5080
WWW.ARCH-ENG.COM

DISCLAIMER

OWNERSHIP AND USE OF DOCUMENTS, DRAWINGS AND SPECIFICATIONS ARE INSTRUMENTS OF PROFESSIONAL SERVICE AND SHALL REMAIN THE PROPERTY OF THE ARCHITECT. THESE DOCUMENTS ARE NOT TO BE USED, IN WHOLE OR IN PART, FOR ANY OTHER PROJECTS OR PURPOSES OR BY ANY OTHER PARTIES THAN THOSE PROPERLY AUTHORIZED BY CONTRACT WITHOUT THE EXPRESS WRITTEN AUTHORIZATION OF THE ARCHITECT.

REVISIONS

NUMBER	REMARKS	DATE



VINCENT A. DIORIO, INC.
CONSULTING ENGINEERS

89 Access Road Suite Eighteen
Norwood, Massachusetts 02062
tel: (781) 255-9754 fax: (781) 255-9725 email: vadjr@vadeng.com
www.vadeng.com

FOR PERMIT ONLY

PROJECT TITLE

**Cumberland
FARMS**
100 Crossing Blvd, Framingham, Massachusetts

STORE #
V0636

22905 S.R. 7

BOCA RATON, FL
Palm Beach County

DRAWING TITLE

ELECTRICAL
LIGHTING PLAN

DATE AUG 29, 2012	PROJ NO 11117
DRAWN BY DJH	CHECKED BY VAD JR

DRAWING NUMBER

E1.01