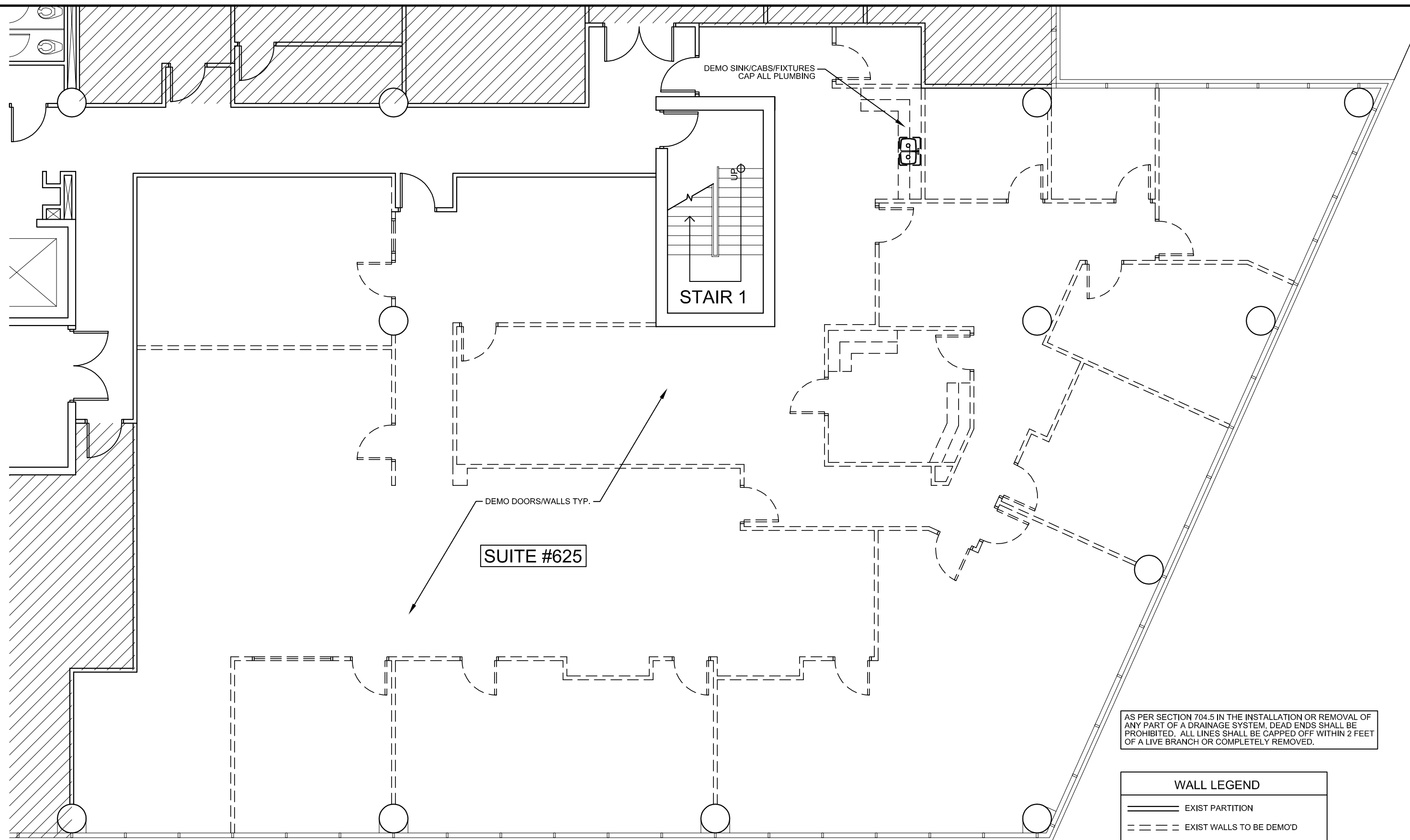


1. ALL WALLS/DOORS/WINDOWS ARE EXISTING AS PER EXSITING FLOOR PLAN 1/A-1
2. ALL CABS ANDMILLWORK ARE EXISTING AS PER EXSITING FLOOR PLAN 1/A-1
3. TOILET ROOMS ARE EXISTING IN COMMON AREA CORRIDOR AS PER KEY PLAN 2/TITLE
3. DRINKING FOUNTAIN IS EXISTING IN COMMON AREA CORRIDOR AS PER KEY PLAN 2/TITLE

1 (EXISTING) FLOOR PLAN

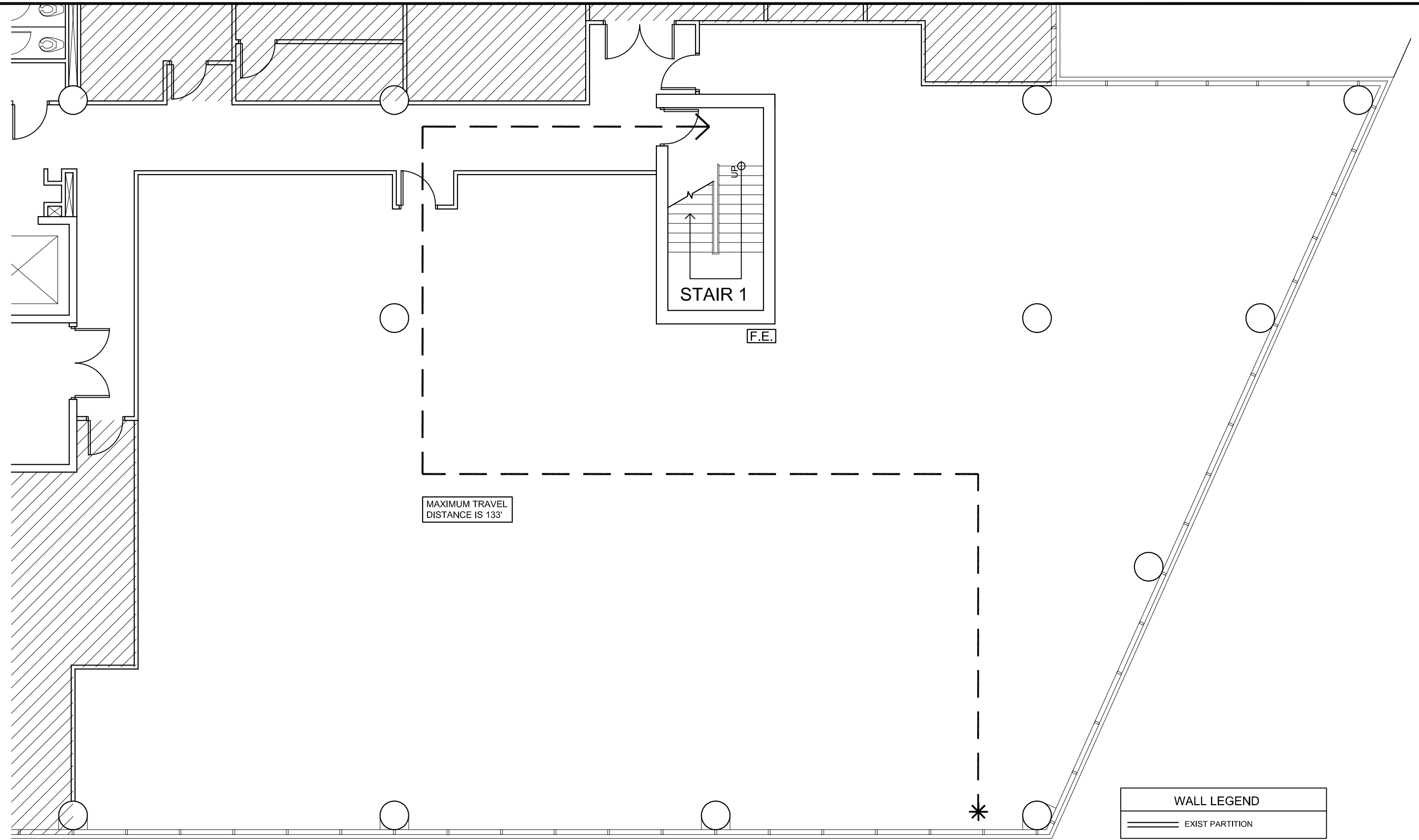
1/8" = 1'-0"



1. REMOVE ALL DASHED WALLS/DOORS AS PER DEMO FLOOR PLAN 1/A-2. DEMO ALL RAISED FOOR WORK AREAS AS PER DEMO FLOOR PLAN 1/A-2. REMOVE ALL ELECTRICAL WIRING FROM DEMO'D WALLS BACK TO THE FIRST JUNCTION BOX. LABEL AND CAP. ALL THERMOSTAT/CONTROL WIRING TO BE SAVED FOR POSSIBLE REUSE. ALL EXIT SIGNS/LIFE SAFETY DEVICES TO BE SAVED FOR POSSIBLE REUSE. REMOVE ALL CARPETING AND SAND/CLEAN FLOOR. ALL DOORS/FRAMES/HARDWARE TO BE STORED IN SPACE FOR POSSIBLE FUTURE USE. DEMO ALL LOW VOLTAGE WIRING BACK TO THE SOURCE
2. ALL CEILING TILE/LIGHTS/GRID TO REMAIN AS EXISTING. SUSPENDED CEILING TO BE SUPPORTED FROM STRUCTURE AS REQUIRED AFTER REMOVAL OF DEMO'D WALLS. ALL VAV UNITS FOR BUILDING HVAC TO REMAIN AS EXISTING
4. PROTECT ALL BUILDING STANDARD HORIZONTAL BLINDS FOR REUSE.
5. ALL FIRE ALARM AND FIRE PROTECTION DEVICES TO REMAIN AS EXISTING. RELOCATE FIRE ALARM DEVICES AS REQUIRED BY THE DEMO. ALL FIRE EXTINGUISHERS TO REMAIN IN SUITE.
6. CONTRACTOR TO VISIT THE SITE AND REVIEW PLANS FOR DISCREPHANIES. REPORT ALL DISCREPHANIES TO THE ARCHITECT PRIOR TO BIDDING.

2 (DEMO) FLOOR PLAN

1/8" = 1'-0"



1. ALL 1 HR RATED FIRE PARTITIONS TO HAVE THE WORDS "FIRE AND SMOKE BARRIER - PROTECT ALL OPENINGS" PERMANENTLY STENCILED ON THE PARTITION ABOVE THE SUSPENDED CEILING. CHARACTERS SHALL BE AT LEAST 4-INCHES IN HEIGHT. IDENTIFICATION SHALL BE SPACED NOT MORE THAN 15' ON CENTER
2. PENETRATIONS THROUGH A FIRE-RATED WALL ASSEMBLY SHALL BE PROTECTED BY A FIRE-STOP SYSTEM OR DEVICE
3. PROVIDE TACTILE SIGNAGE AT REQUIRED EXIT DOORS WITH EXIT SIGNS

3 (PROPOSED) FLOOR PLAN

1/8" = 1'-0"

LIFE SAFETY SUMMARY (SUITE #625)

ITEM	REQUIRED	PROVIDED	CODE
EXIT ACCESS DOORWAY	2	2	FBC TABLE 1015.1
TRAVEL DISTANCE	300'	133'	FBC TABLE 1016.1
COMMON PATH OF TRAVEL	100'	-	FBC 1014.3(1)
DEAD END CORRIDOR	50'	-	FBC 1017.3(2)
BUSINESS GROUP "B" OCCUPANCY 5,785 SQUARE FEET @ 1/100 = 58 OCCUPANTS			FBC TABLE 1004.1.1

- * STRUCTURES UNDERGOING CONSTRUCTION, ALTERATION OR DEMOLITION SHALL COMPLY WITH NFPA 241.
- * ACCUMULATIONS OF COMBUSTABLE WASTE AND DUST DEBRIS SHALL BE REMOVED FROM THE STRUCTURE AND ITS IMMEDIATE VICINITY AT THE END OF THE SHIFT OR MORE FREQUENTLY AS NECESSARY FOR SAFE OPERATIONS
- * EXIT AND ACCESS CORRIDORS ARE TO BE MAINTAINED AND REMAIN CLEAR AND UNOBSTRUCTED
- * THE MAIN BUILDINGS FIRE PROTECTION SYSTEMS SHALL BE MAINTAINED AND OPERATIONAL AT ALL TIMES
- * IN THE EVENT THA THE FIRE PROTECTION SYSTEM IS OUT OF SERVICE FOR MORE THAN 4 HOURS IN A 24 HOUR PERIOD, THE BUILDING SHALL BE PLACED ON A FIRE WATCH

4 NOTES

Bd

birse design inc.

5300 woodland lakes drive
palm beach gardens, fl 33418
phone 561-249-4001
fax 772-409-9834
AA26001615

ALLEN S BIRSE
AR94279

SUITE #625 DEMO

BANK OF AMERICA CENTRE
825 N FLAGLER DR
WEST PALM BEACH, FL

PROJECT NUMBER BOA11

REVISIONS

- 1
- 2
- 3
- 4
- 5

THIS DESIGN AND THESE DRAWINGS ARE THE PROPERTY OF BIRSE DESIGN INC. NO PART OF THIS WORK MAY BE REPRODUCED WITHOUT PRIOR WRITTEN PERMISSION FROM BIRSE DESIGN INC.

DRAWN BY ASB

CD

02/03/13

A-1